



# WOLKITE UNIVERSITY

COLLEGE OF ENGINEERING  
AND TECHNOLOGY  
DEP- ARCHITECTURE  
THESIS PROJECT

**PROJECT TITLE**

**RIVITALIZING COMMUNAL  
SPACE IN CASE OF HAWASSA**

A THESIS PROPOSAL SUBMITTED TO THE  
DEPARTMENT OF ARCHITECTURE  
WOLKITE UNIVERSITY IN PARTIAL  
FULFILLMENT FOR BSC DEGREE IN  
ARCHITECTURE

**NAME ABENEZER MARKOS  
ID 050/07**

**SUPERVISOR: AMHASELASSE**

**DATE OF SUBMISSION 14.10.2011**

### **Acknowledgement**

First and above all, I praise God, the almighty for providing me this opportunity and granting me the capability to proceed successfully. This pre-thesis appears in its current form due to the assistance and guidance of several people. I would therefore like to offer my heartfelt thanks to them.

I want to express my deep thanks to my advisor amhaselasse for his considerate guidance, critical comments, and correction of the pre-thesis. And also, for all advisors and students for their guidance and support.

Finally I would also like to thank my family for their continued patience, love and encouragement while I work on this pre-thesis

## **Abstract**

This study is to understand and know the effect of physical spaces which are provided by the role of architecture in the formation and increasing of social interaction within the community. These study analyzes different literature reviews and case studies to identify what kinds of architectural spaces assures the social interaction among the community, these architectural spaces which are accepted by the community also identified by data analysis which is conducted or presented for the community. Finally by connecting all analyzed data and findings together for accurate and well planned recommendations of RIVITALIZING COMMUNAL SPACE IN CASE OF HAWASSA

## Contents

INTRODUCTION.....	7
1.1 BACKGROUND.....	7
The meaning of social peace.....	7
1.2 PROBLAME STATEMENT .....	8
1.3 RESEARCH QUESTIONS.....	8
1.4 OBJECTIVE OF THE STUDY .....	8
1.4.1 GENERAL OBJECTIVE .....	8
1.4.2 SPACIFIC OBJECTIVE .....	8
1.5 SCOPE.....	9
1.5.1 Thematic scope .....	9
1.5.2 Spatial scope .....	9
1.6 SIGINIFICANCE OF THE STUDY. ....	9
1.7 LIMITATION OF THE STUDY.....	9
CHAPTER TWO .....	10
METHEDIOLOGY.....	10
INTRODUCTION.....	10
1 STUDY DESIGN.....	10
1.1 Source of data .....	10
1.1.1 Primary data collection .....	10
1.1.2 Secondary data collection.....	11
Analysis technique .....	12
CHAPTER THREE .....	13
LITRATURE REVIEW AND CASE STUDIE .....	13
2.1 Literature review.....	13
2.1.1 Physical space and Social interactions .....	13
2.1.2 Social communication .....	14
2.1.3 Architecture for social interaction .....	15
2.1.4 Architectural spaces and social interaction .....	15
Great baths, Citadels, City Squares .....	17
Courtyards, Living Rooms .....	18

Community Space, Gardens & Parks.....	19
Community Centers, Theatres, Exhibition Spaces .....	19
Roof Top Gardens, Market Spaces.....	20
Commercial Centers, Malls, Cultural Centers. Media-Houses.....	21
Community hub .....	22
2.2 CASE STUDIES.....	24
2.2.1 CASE STUDY ONE.....	24
Firstenburg community center .....	24
SITE ECOLOGY AND LAND USE .....	26
Site arrangement of the Firstenburg Community Cente .....	27
ENERGY FLOWS.....	27
MATERIALS AND CONSTRUCTION .....	28
INDOOR QUALITY .....	30
2.2.2 CASE STUDY TWO .....	31
4.1 Introduction .....	34
4.2 Description of the study area.....	34
Geography.....	35
Climate .....	36
Population.....	36
4.3 Selected area study.....	38
4.3.1 Introduction .....	38
4.3.2 History about the place.....	38
4.3.3 Site investigation.....	39
Location.....	39
4.4 Data presentation and analysis.....	41
4.4.1 Community member’s assessment results .....	41
4.4.2 Questionnaire .....	41
4.4.2.1 Close ended Questions types.....	41
Interview .....	45
CHAPTER FIVE .....	48
5. RESERCH FINDING AND CONCLUSION .....	48

5.1 Summary of findings .....	48
Findings .....	48
Conclusions .....	48
CHAPTER SIX.....	49
RECOMMENDATION .....	49
CHAPTER SEVEN .....	50
7 DESIGN PROPOSAL .....	50
7.1 Design principles .....	50
1. Sustainability .....	50
2. Efficiency .....	50
3. Equity, accessibility and inclusiveness .....	50
4. Diversity .....	50
5. Protection/stewardship of environmental and cultural assets .....	50
6. Innovation and creativity .....	50
7. Participation and wellbeing .....	50
8. Integration of social interaction.....	51
9. Meet the needs of a Changing Community. ....	51
8 .Continuity and unity - variety and contrast .....	51
7.2 Architectural Design.....	51
7.2.1 Site selection .....	51
Site selection criteria .....	51
7.2.2 Site Analysis .....	52
Site location .....	52
7.2.3 Program development .....	56
7.2.3 Concept Development .....	62
7.2.4 Form Development .....	63
7.3 DESIGN DRAWINGS.....	64
Reference.....	70
Appendix .....	72

## CHAPTER ONE

### INTRODUCTION

#### 1.1 BACKGROUND

Social interaction refers to particular forms of externalities, in which the actions of a reference group distract an individual's preferences. The reference group depends on the context and is typically an individual's family, neighbors, and associates. A social interaction is an exchange between two or more individuals and is a building block of society. Social interaction can be studied between groups of two, three or larger social groups. By interacting with one another, people design rules, institutions and systems within which they seek to live. Symbols are used to communicate the expectations of a given society to those new to it. The empirical study of social interaction is one of the subjects of micro sociology. Methods include symbolic interaction and ethno methodology. (Schelling 1971).

#### The meaning of social peace

From the meaning of peace in general, who either knows the absence of negative phenomena such as violence, or in the presence of positive aspects such as tranquility, stability, health, prosperity etc., could approach the concept of social peace. Each community consists of a group of humans, necessarily different from each other, both in religious affiliation, religious, or social possession or career, but collects them all what we could call "social contract", any unwritten commitment between them, the rights and obligations of each party in the community. Out of this contract violation of rights of a party are not required or needed. (By Dr.Ehap elhawari 24 oct 2017)

## **1.2 PROBLAME STATEMENT**

- the protect the youths and children from wasted place
- to treat the society mentally ,economically and different spaces
- Lacking places where peoples in the society get practice and inspired.
- Shortage of society engagement & enabling capabilities.
- To insure the societies economic benefit with the consideration of their space usage

Those problems are affecting and decreasing the productivity of the society and putting its bad footprints on the development and economy of the country

## **1.3 RESEARCH QUESTIONS**

1. how many people are users a green spaces ?
2. what kind of function could be add to the green space to vitalize and promote the green space usage of the society ?
3. who are the active users of the space ?
4. how could we announce the economics of the society through the usage of the green space?

## **1.4 OBJECTIVE OF THE STUDY**

### **1.4.1 GENERAL OBJECTIVE**

Generally the objective of this study is to assure social interaction and social peace of a community by spread using of architecture and the use of architectural design as a means towards the accomplishment of an ultimate end, which for amazing, well, architecturally beautiful, various, society of choice made on common respect and communal responsibility.

### **1.4.2 SPACIFIC OBJECTIVE**

- ✓ To provide a functional public space
- ✓ Guide their space usage pattern by providing different spaces
- ✓ To advance the worth of life and economic opportunities for community members.
- ✓ To provide functional working space to the society (specially to the youths) in order to upgrade the economic activity

## **1.5 SCOPE**

### **1.5.1 Thematic scope**

This study will begin to monitor a way for analyzing cities which are having dens society which are living in one place as a community or a society, in Ethiopia that have areas very close to well-known community with lively activity's, that are very extreme away from the image being prepared for.

### **1.5.2 Spatial scope**

The study will supervise the problems of some community or society from hawassa town collected of at least 2 kebeles with sort of 10km on the areas which are some problems on social interaction, caused by incoming development and civilization

## **1.6 SIGNIFICANCE OF THE STUDY.**

The importance of these study helps to advances knowledge which helps to create sparkles that are expected as purely service take on a new life and one of community based on the peoples and how they use it. The results of these study will give an in depth insight in to how community or social interaction space is could be used effectively to address a society need.

## **1.7 LIMITATION OF THE STUDY.**

The following reasons made may study to be limited

- ✓ Cultural celebrations

When I analyzing the data in hawassa it was a week of sidamas New Year celebrations this limited me to not get necessary information and persons simply

- ✓ Availability of governmental officials at a time of data gathering and analysis
- ✓ Translation of gathered questioners in to English and interpreting it clearly
- ✓ Shortage of available and organized data

## CHAPTER TWO

### METHEDIOLOGY

#### INTRODUCTION

##### 1 STUDY DESIGN

This study focused on the role of architecture for increasing social and neighborhoods interaction. The study design incorporated the analysis and appraisal of social interaction in the community. The design also includes the investigation of community active participation, attitude and involvement in social spaces.

The data were collected through a variety of methods which are basic for this study such as observation, questionnaires, and direct interviews,. Include also a review of relevant literatures of other countries' experiences by both case study and literature review.

##### 1.1 Source of data

- ✚ The study uses two types of data sources; primary and secondary.
- ✚ The primary data is collected through by observation, questionnaires, direct interviews,
- ✚ The secondary data were obtained from books, documents, and reports which are mainly focused role architecture for social unity and interactions which are available on internet.

This study tries to utilize qualitative and quantitative research methods since it helps to contribute to a deeper understanding of how the activities of a community hub or center in a neighborhood can affect social interaction and intimacy. First this part will show the structure of the study. After that it will explain decision for the data collection method which will be used to answer questions. The final part of this chapter is focused on the data collection process

##### 1.1.1 Primary data collection

On sit e observations , quantification and qualification

- ✚ pictures
- ✚ sample interviews

No	Data source	Method of collection	Interpretation method	Relevance
1	<b>Observation</b>	<ul style="list-style-type: none"> <li>• Picture and photography</li> <li>• Note</li> </ul>	<ul style="list-style-type: none"> <li>• Pictures</li> <li>• Notes</li> <li>• tables</li> </ul>	To evoke dates gathered during informal visits and direct observation
2	<b>Stakeholder</b> <ul style="list-style-type: none"> <li>• Community members</li> <li>• community administration</li> </ul>	<ul style="list-style-type: none"> <li>• Questionnaires and</li> <li>• Direct interview</li> </ul>	<ul style="list-style-type: none"> <li>• Notes</li> <li>• Table and statically writings</li> </ul>	-To know the number of residents -To analyze and know age gaps in the community - to understand the needs of community based on their opinion

### 1.1.2 Secondary data collection

- ✓ Statistics from government al and non - government al organizations
- ✓ Analysis based on the gathered data
- ✓ Previous research papers on similar topics

No	Data source	Method of collection	Interpretation method	Relevance
1	DOCUMENTS OR LITRATURES	<b>By reading Materials from -:</b> <ul style="list-style-type: none"> <li>• books</li> <li>• Internet sites</li> <li>• Journals</li> <li>• Publications and other</li> </ul>	<ul style="list-style-type: none"> <li>• Notes</li> <li>• Graphical representation</li> <li>• tables</li> </ul>	<ul style="list-style-type: none"> <li>• To understand the basic nature of community</li> <li>• To find out international standards</li> </ul>

#### Analysis technique

Most of the data will be obtained from literature reviews from books and internet browsing and similar cases of study of orphanage design. Primary data collection will help with the full understanding of the title, scope and different views on the subject matter. Interviews and questionnaires are used for identifying and synthesizing the approach to design

#### Research (method) to design phase



## CHAPTER THREE

### LITERATURE REVIEW AND CASE STUDIE

#### 2.1 Literature review

##### 2.1.1 Physical space and Social interactions

Didn't know what made people want to be friends. I didn't know what made people attractive to one another. I didn't know what underlay Social Interactions. (Ted Bundy 2012)

A social interaction is an exchange between two or more individuals and is a building block of society. Social interaction can be studied between groups of two, three or larger social groups. By interacting with one another, people design rules, institutions and systems within which they seek to live. Symbols are used to communicate the expectations of a given society to those new to it. The empirical study of social interaction is one of the subjects of micro sociology. Methods include symbolic interaction and ethno methodology as well as later academic sub-divisions and studies such as psychosocial studies, conversational analysis and human-computer interaction. With symbolic interaction, reality is seen as social, developed interaction with others. Ethno-methodology questions how people's interactions can create the illusion of a shared social order despite not understanding each other fully and having differing perspectives. Dunlap, D. W. (1997).

Whether the explicit intention to influence behavior drives the design process-architectural determinism - or whether the behavior consequences of design decisions are only revealed and considered! As part of a post-occupancy evaluation /e.g. Zeisel, 2006) or by social scientists or psychologists studying the impact of a development, there are links between the design of the built environment and our behavior, both individually and socially.

Most architectural patterns for influencing behavior involve, in one way or another, the physical arrangement of building elements-inside or outside-or a change in material properties. In each case, there is the possibility of changing people's perceptions of what behavior is possible or appropriate, and the possibility of actually forcing some behavior to occur or not occur. These are not independent alternatives: the perception that some behavior is possible or

impossible can be a result of learning 'the hard way' in the past.( Zeisel, 2006 physical space and social interaction)

### 2.1.2 Social communication

The design and evaluation of the user experience for social communication is a major issue. These social experiences are thus closely related to the feeling, emotional and affective experiences and satisfaction of the interaction as well. Cognitive researchers have assumed that communication competence exists if the communicator has a diverse range of social knowledge and the cognitive abilities required for effective communication (Omar, 2014). Communication is one of the most important concepts taken up in connection with surrounding of the towns. Communication in organizational life provides a basis for understanding virtually every human process which occurs in an organization (Ayuba et. al., 2014). Edvim Amir defines communication in a general sense: communication means skill of transferring information, thoughts and human behaviors from one person to another person. Aristotle, the Greek philosopher, may be the first thinker who mentioned communication for the first time 2300 years ago. He defines communication in book Ritorigha: communication means searching for all available means and available for encouraging and persuading others.

Henry Lindgern in his book, Human Communication Art says: communication is a process that contains and implies all sorts of transferring the meaning (Sarokhani, 1993). Communication is regarded as an event during which two or more persons exchange their ideas, views, feelings and opinions and inform each other of the use of the messages of which meaning is equal for all of them. Then communication is the transfer of the message to another person and is the basis of society formation and expansion of the communication causes to expand the culture (Mohsenianrad, 1995).

Supportive social environment is the condition that employs social support (Laurens, 2012). Lewin (cited in Staats, 2004) stated that one of the most important factors responsible for the success of changing communication and human being behavior in a small group, is the social interaction being able to experience group. Today, corporate communication practitioners are expected to manage extremely complex and varied operations of an organization (Mohamad, et al., 2014). Also,

social media have become an integral part of communication behavior, and organizations cannot ignore social media in their crisis communications any longer. With social media presence being integrated and embedded in our everyday life, the fields of communication such as internal, external and corporate communication have also been revolutionized. Because social media is built on relationships, it is worth revisiting what makes a good relationship. In a personal relationship, openness, communication, engagement, and reciprocity are all important factors to developing a strong bond and a quality relationship (Husain, et al., 2014).

### **2.1.3 Architecture for social interaction**

"There is no doubt whatever about the influence of architecture and structure upon human character and action. We make our buildings and afterwards they make us. They regulate the course of our lives. (Winston Churchill, addressing the English Architectural Association, 1924)

### **2.1.4 Architectural spaces and social interaction**

During the course of time line we have seen the evolution of social spaces from when there were no homes (Caves) to the evolution of public spaces in the created structures till today. Principles of gathering has go on the same in terms of creating public spaces but the definition has changed from time to time and so has the insight behind those spaces but the use and purpose has more or Less so ever go on the same for interaction of these spaces for public or people of the area/neighborhood/city/house etc.

Earlier times public spaces or communal grounds along with trading lands. Marketplaces and areas were looked as a social interaction spaces where people from all over the neighborhood and city use to gather around in these communal areas and interact with each other. Over the period of time these areas have improved and the rationality of the use of these spaces increased as well. The concepts of design enhanced in-order for catering these spaces for embedding the social and cultural growth in the society also came through with better perceptions and visions with the growth in time line. (The self-sufficient habitat from the city to the building p.6)

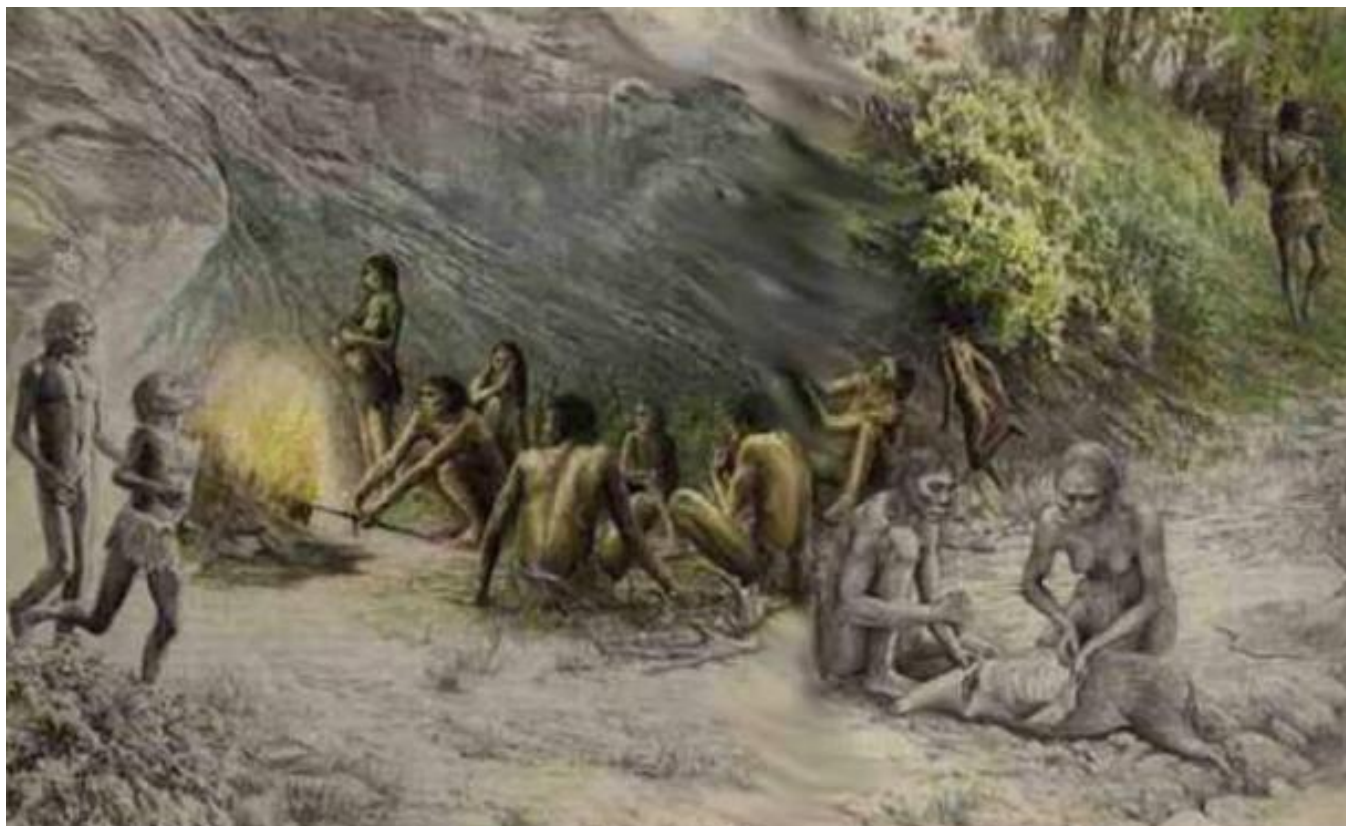


Figure 1 common fire grounds in the middle (cave ,tends etc..)

Community Design or living Design for the society has always been a part of the bigger picture i.e., for the society which formulates to communications. Creation of social interactive spaces as early as the ancient times gave birth to new community ideas which are still enhancing with the flow of the evolution of human kind.

During the ancient early times when there were no homes or dwelling units when it was just the nature and the shelters provided by nature such as caves. The social gatherings or the interactive spaces during that time were starting to get defined by the notion of gathering around the fire where people/nomads use to gather around and hence the social interaction between the people and the communities started. (The self-sufficient habitat from the city to the building p.6)

As seen in the image above the social gatherings during the time period, people use to pleat all together around the fire for many different purposes such as communication amongst one another, cooking, dance{or events) etc., The notion

of social interaction is not just a recent development but one of the first characteristics for development.

#### Great baths, Citadels, City Squares

Knowing the history from when the first civilization emanated into depiction which was of The Indus Valley Civilization where the communities congregated to form a composed community as one whole in a form of a city with administration and use of natural resources to twitch the formulation of living conditions as a society. (The self-sufficient habitat from the city to the building p.7)

They very well kept in mind the dwelling social interactions amongst the society for which they generated public spaces such as the great baths, citadels, city square as social interactive spaces where the major interactions and decisions took in place. And hence the definition of public spaces or interactive spaces began. (The self-sufficient habitat from the city to the building p.6)

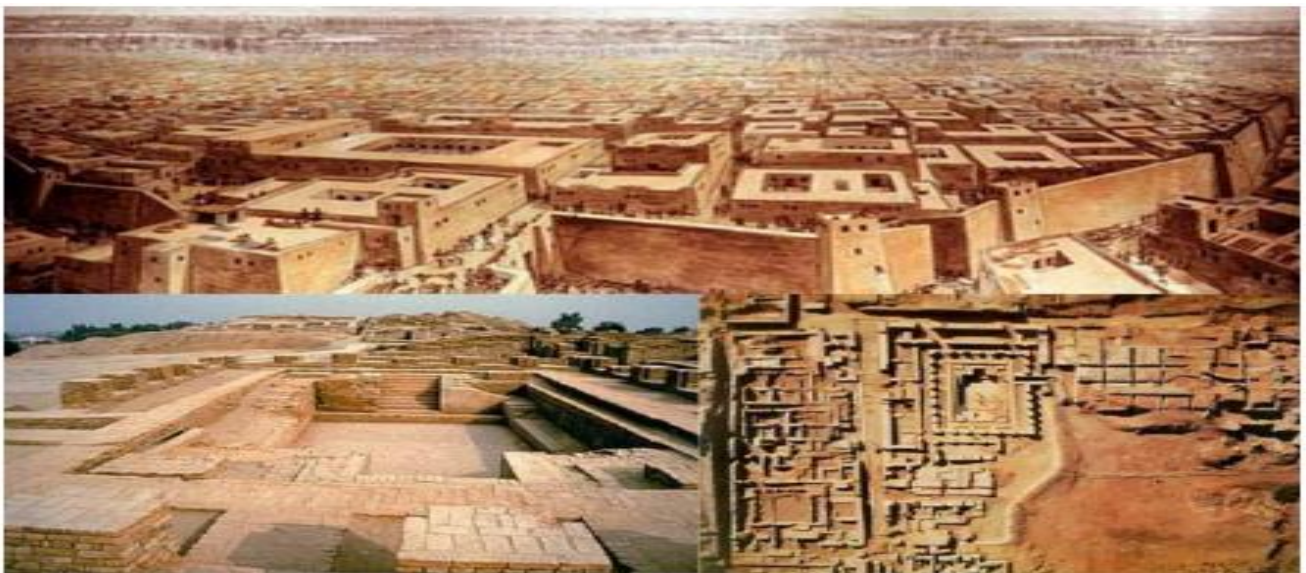


Figure-2 great baths

#### Great baths

Great baths were the earliest known public water tanks or public baths of the ancient world. Leaving a big mark on the public space interactive design.

Great baths were the earliest known public water tanks or public baths of the ancient world. Leaving a big mark on the public space interactive design. The civilization not only consisted of the great bath but also the great granary where all the harvested crops use to be kept of the entire city and assembly hall where the decision making and public announcements and events use to happen for the city which can clearly mark it as an administrative city not only well planned but also very well socially planned.

#### Courtyards, Living Rooms

The two structures designed not only as open or big spaces one as an open shed structure and other as a closed shed structure in dwelling units, houses, castles etc., for ventilation or other stereotypical architectural design elements of spaces but plays a very important role and aspect in the social interaction not just with the community and society that one brings into their living space but also amongst the users/family/people living inside the unit as well. Being a common area in a house. They deed as interactive spaces in the house. A tradition that is still followed till date. (The self-sufficient habitat from the city to the building p.8)



Figure -3 courtyard are living room

Courtyard and living room

### Community Space, Gardens & Parks

Concept of community spaces, parks & gardens arrived with the growth of cities and to have a calm, nature processing environment spaces in the busy towns that were growing. Another place for people to interactive and have a calmer experience. Space designed to generate relaxing social interactive spaces following the rule/law of enclosure between the space and its participants



Figure -4 community space gardens and parks

### Community Centers, Theatres, Exhibition Spaces

With the arrival of community centers, theatres and exhibition spaces came a new platform for societal congregation and communications. Societies started to relish in with this new fundamental notion of these communicates of certain inherent and distinct emotional qualities. People found the avoid of static quality that were often in formal balances of the society, if quality is not desired then there was an additional factor of variation and contrast. They moved a larger dull mass to more vibrant aspects of social interaction exchanges, which helped a lot of masses to see a

growth in themselves which they would have achieved. Hence, the emergence of social interactions from gates to open spaces gave light to much more new aspects in public's eye towards the positive aspect of life for, ·seize the day



Figure-5 First market places for interaction

#### Roof Top Gardens, Market Spaces

With inaugural to newer aspects of interactions, people started bringing the outer spaces to their inner space by creating rooftop gardens or balcony gardens as more vibrant social interactive spaces in the house as oppose to the notion that had been going on. Along with it the market spaces were started to been looked differently as a place for interactions as well and not just a place for bargain hunting.



Figure-6 Rooftop gardens

#### **Commercial Centers, Malls, Cultural Centers. Media-Houses**

Emergence of such public spaces where it had the conception of bringing in multi work environments, neighborhoods with entertainment dynamics, and with the urban social interaction grew up by fetching in the enhancements in a community's quality of life. It's always essential to think through how definition and design of such centers and spaces connect to the consumer while balancing a design that also satisfies the society. It minimizes and maximizes the specialty in close proximity to the mouth of major society. Controlled environments, malls and spaces that offer protection and designated 'holding zones' for people to "meet and greet" are crucial. Thoughtful design creates centers with points of difference and offers more than just an outing thus becoming a destination of choice enhancing the interactive sliders of a community. Architecture that ties the community to the development is essential and each center needs to be relevant to the local context that it is to embed itself into.



### Community hub

Community hubs provide a central access point for a range of needed health and social services, along with cultural, recreational, and green spaces to nourish community life. A community hub can include a school, a neighborhood center, an early learning center, a library, an elderly person's center, a community health center, an old government building, and another public space. Whether virtual or located in a physical building, whether located in a high-density urban neighborhood or an isolated rural community, each hub is as unique as the community it serves and is defined by local needs, services and resources

Community hub can serve as a place that helps the citizens of the neighborhood in which the community hub is located to realize their ideas and initiatives. It is a gathering place for social activities but also place of guidance for citizens who are in need of help. Hickman (2012) states that community centers or hub in disadvantaged neighborhoods are likely to be more used than centers in areas that are better off. They also tend to play a large role in the lives of the visitors since they are a venue for Social Interaction and networking. Because they serve as a venue for Social

Interaction and networking, community centers can help with improving the social unity in the neighborhood of its location

When people think of community hubs, they think of places where people come together to get services, meet one another and plan together. Community hubs are gathering places that help communities live build and grow together. No community hub is like another, as each brings together a variety of different services, programs and/or social and cultural activities to reflect local community needs. It is this diversity of activity that allows community hubs to play a critical role in building economic and social cohesion in the community. A community hub or center can provide a base for a wide range of activities and services:

- ✓ social and recreational
- ✓ health and well-being
- ✓ education, training and advice
- ✓ information and technology

And the subsequent benefits for a local community are:

- ✓ a local place to come together to socialize,
- ✓ creates community unity and sense of belonging
- ✓ isolation and increases participation of the most excluded
- ✓ a place where a range of different services can be delivered by different bodies under the same roof
- ✓ provides an alternative learning environment
- ✓ participation and engagement
- ✓ supports the development of community-led activities to meet local needs

## 2.2 CASE STUDIES

### 2.2.1 CASE STUDY ONE

Firstenburg community center  
Vancouver, Washington



Project Summary

Location: Vancouver, Washington Gross Sf: 80,982

Building Footprint: 64,003 square feet

Cost: \$17M

Completed: 2007

The Furstenberg Community Center is a multi-use facility that combines recreational and community spaces with other public services. It embodies the character of the community, provides convenient access to services and brings together a diverse mix of users.

The recreation program includes swim and warm water leisure/therapy pools, a two-court gymnasium, fitness space; aerobics dance studios and multi-purpose activity spaces. The community spaces incorporate child watch, a teen lounge and game room, a senior lounge and resource room, and meeting rooms. The multi-use community rooms, which together seat up to 350, address the lack of meeting and gathering spaces in east Vancouver and provide a venue for City Council meetings, social dances, performances, neighborhood fairs and community forums.

The building and site were carefully designed to seamlessly integrate a now complete city branch library (also designed by Opsis), a future lap pool, and a future arts and crafts wing, which will reinforce the civic identity of this facility. Families have the opportunity to visit the site together, using library and community center resources to enjoy a wide range of recreation and learning activities



### Site Features

1 Library, Completed 2010

2 Courtyard with Spray Ground

3 Bus Stop

4 Future Lap Pool

5 Bike Parking

6 Furstenberg Community HUB

7 Walking Trail / Service Lane 8 Porous Concrete Paving

9 Established Coniferous Forest

10 Future Parking



#### **SITE ECOLOGY AND LAND USE**

The Furstenberg Community Center is a two level building massed to reduce the development footprint, preserve mature tree stands and enliven the facility by concentrating activity and social spaces. At the start of the design process, an extensive tree survey identified the presence of laminated root rot disease throughout much of the forested site, as well as dense stands of weak trees dangerously susceptible to blow down. The footprint and position of the building are a result of careful analysis of the areas of healthy and significant trees, solar orientation, prevailing wind direction, noise from the adjacent street, and program requirements.

The building takes advantage of the park-like setting with large windows for day lighting and courtyards to allow interior functions to participate with the natural landscape. Native drought tolerant planting was integrated into the coniferous forest ecology creating habitat for birds and other species. Use of alternative transportation is encouraged by building a bus stop and shelter, providing ample bike parking and designated carpool parking and creating pedestrian links to an adjacent park and future

regional trail. The parking lot's organic shape maximizes the number of significant existing trees retained, while its use of porous concrete and drainage swales means that all of the storm water is managed on site with no impact on the municipal system

### Site arrangement of the Furstenberg Community Center



### ENERGY FLOWS

Sustainability goals identified at an early design Charente highlighted maximization of transparency between spaces, using daylight throughout the entire building, reinforcing opportunities for passive cooling, creating strong connections to the site and providing a welcoming open display of recreation and community spaces. These forces resulted in a long thin building footprint that allows for exceptional daylight and cross ventilation, while creating a large protected south facing courtyard. Radiant concrete slab floors are heated or chilled to maintain comfortable temperatures throughout the year while using minimal energy. The mass of the concrete in the floor as well as in exposed thermally massive walls effectively stores heat or coolness to decrease the effect of exterior temperature swings. Other passive systems such as automated natural ventilation and solar shading devices that block heat gain from direct sun in the summer, but allow it during the winter work in tandem with the thermal mass and mechanical systems. A central heat pump recovers waste heat in the summer and uses it to heat the pool and domestic water, often allowing the 96% efficient boilers to shut down entirely. Daylight sensors integrated with dimmable energy efficient lighting fixtures eliminate the use of artificial lighting whenever possible. In combination, these systems result in energy use that is anticipated to be at least 27% less than traditional building construction



Energy Use

27%  
 Annual Energy Savings  
 \$66,629  
 Annual Energy Cost Savings

Mechanical Air Handler Systems

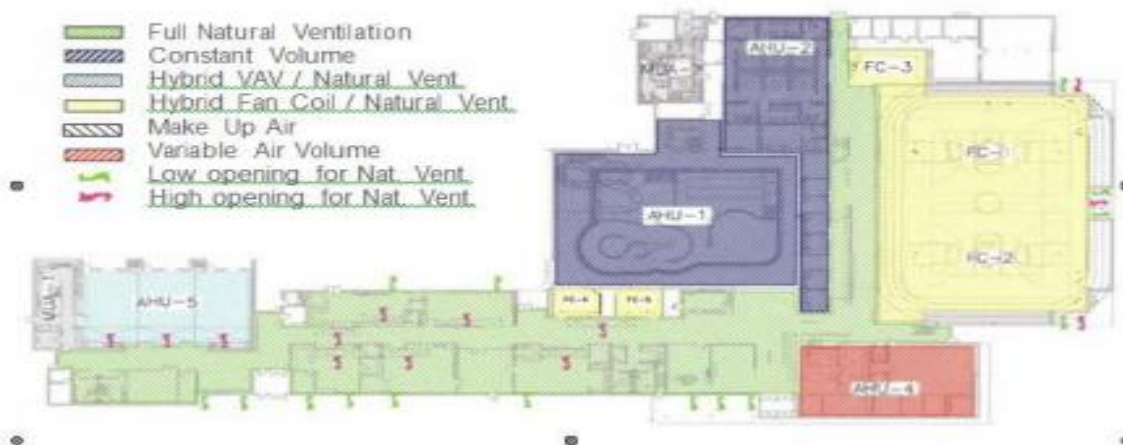


Figure 13 Air handler system plan Firstenburg Community Center

**MATERIALS AND CONSTRUCTION**

Throughout this heavily-used facility, materials have been selected for their durability, beauty, and sustainability. A strong emphasis is placed on natural, non-toxic, enduring materials that will be attractive for decades to come, while also eliminating material use to get when possible. Douglas fir trees, many of which were diseased, were harvested from the site and milled locally for 12,000 board feet of material used as wall paneling, screens, benches and bleacher seats. Other wood, such as the exterior wood rain screen

system that provides durable protection for the building's waterproofing, was constructed with Forest Stewardship Council certified sustainably harvested wood. The bamboo community room flooring and acoustical wall paneling made from perforated wheat board are quick growing 'rapidlyrenewable' materials. Recycled materials such as the glass wall tiles used in the locker rooms and natatorium make up nearly 30% of all construction materials used. Use of unnecessary materials was eliminated with the use of exposed steel structure, ground face concrete masonry block walls, and concrete floors, and passive heating and cool.



**INDOOR QUALITY**

Ample day lighting, natural ventilation and non-toxic finishes help Firstenberg Community Center provide a healthy environment for the community's health and recreation activities. The design team used the Portland Delighting Lab's artificial sky to model a variety of monitor and sunshade configuration possibilities, and a three dimensional model simulating air patterns and space temperatures was created in order to refine the natural ventilation systems. These efforts resulted in east-facing roof monitors with windows operated by sensor-activated actuators to provide deep penetration of daylight into the building and natural stack ventilation as well as north facing monitors at the gymnasium to provide natural stack ventilation and throw daylight deep into the building for balanced, glare-free natural light.

Air quality is further improved by CO<sub>2</sub> sensors and low level trickle vents that ensure sufficient ventilation while minimizing energy loads. Composite wood and agrifiber products specified

contain no added formaldehyde and construction materials were specified to avoid volatile organic compounds (VOC's). In the interior, low level exhaust and

ultraviolet secondary water treatment reduce air-borne chlorine contaminants while fabric duct work can be laundered to maintain a clean air distribution system.

### 2.2.2 CASE STUDY TWO

Surry hills library and community center.



Location: Sydney, Australia

Architect: Francis-Jones Morehen Thorp

Typology: Community Center & Library

Size: 22,800 Square Feet

Client: City of Sydney

**Program:** Library, Meeting Room, Cafe, Administration, Study Room, Computer Laboratory, Kitchen, Storeroom, Neighborhood Center, Language Laboratory, Children's Play Space

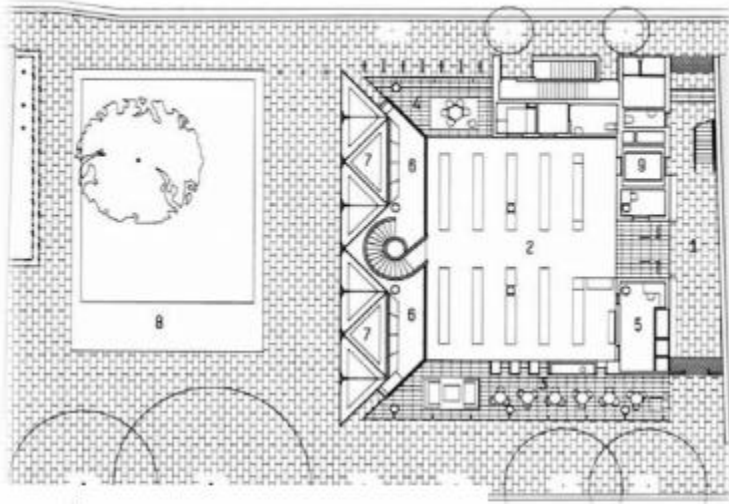
This case certainly stands out among the selected case studies as a model for innovative sustainable design strategies. Working to minimize the carbon footprint was an

important design decision, which has a large impact on the materials that were included throughout the project. While this building has made efforts to integrate itself into an urban environment, the city council has termed projects of similar urban scales as urban villages. This criticism may be unjustified as a city the size of Sidney can certainly accommodate a building of this scale.

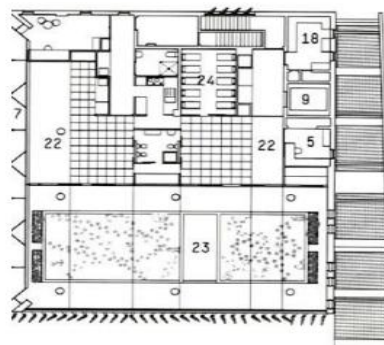
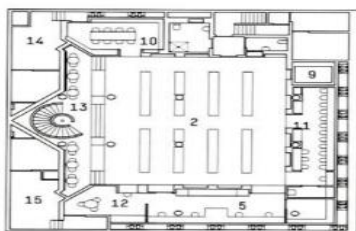
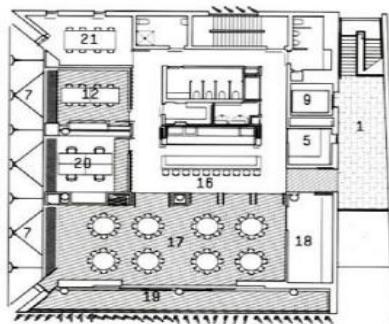


The glass facade is supported by triangulated chimneys, which draw air from the top of the building and through a series of bio filtering and passive conditioning mechanisms. The glass skin will allow for spatial transparency to the site it surrounds. The air runs through a thermal labyrinth near the base of the building where the air is cooled and released inside the facility; the building is also equipped with automatic sun shading devices and passive technology. The roof is shaded by photovoltaic panels in order to reduce grid necessary grid power. Low- VOC materials, impressive passive and hybrid systems, and geothermal energy will increase energy conservation while creating an awareness of environmental initiatives used in this public facility.

**In conclusion of this case study**, there are some great spaces within this community center. The sustainable strategies that were implemented within this project suggest that the conditions of the inside and outside environment were very important to the client. We see an increase of indoor air quality by 5' and a substantial reduction in the facility's carbon footprint. The building's proportional design elements and its relationship to its urban context are other key factors that made its success.



- 1. Lobby
- 2. Library Collection
- 3. Reading Room and Cafe
- 4. Children's space
- 5. Administration
- 6. Void
- 7. Environmental Atrium
- 8. Water Storage Tank
- 9. Elevator
- 10. Local History Study Room
- 11. IT and Internet Access
- 12. Meeting Room
- 13. Magazine and Newspaper Reading
- 14. Water Recycling Plant
- 15. Geothermal Bore Plant
- 16. Teaching Kitchen
- 17. Function room
- 18. Storeroom
- 19. Balcony
- 20. Neighborhood Center
- 21. Language Laboratory
- 22. Children's Play Space
- 23. Outdoor Play Space



24. Sleeping Room

## CHAPTE FOUR

### 4. CASE AREA ANALYSIS

#### 4.1 Introduction

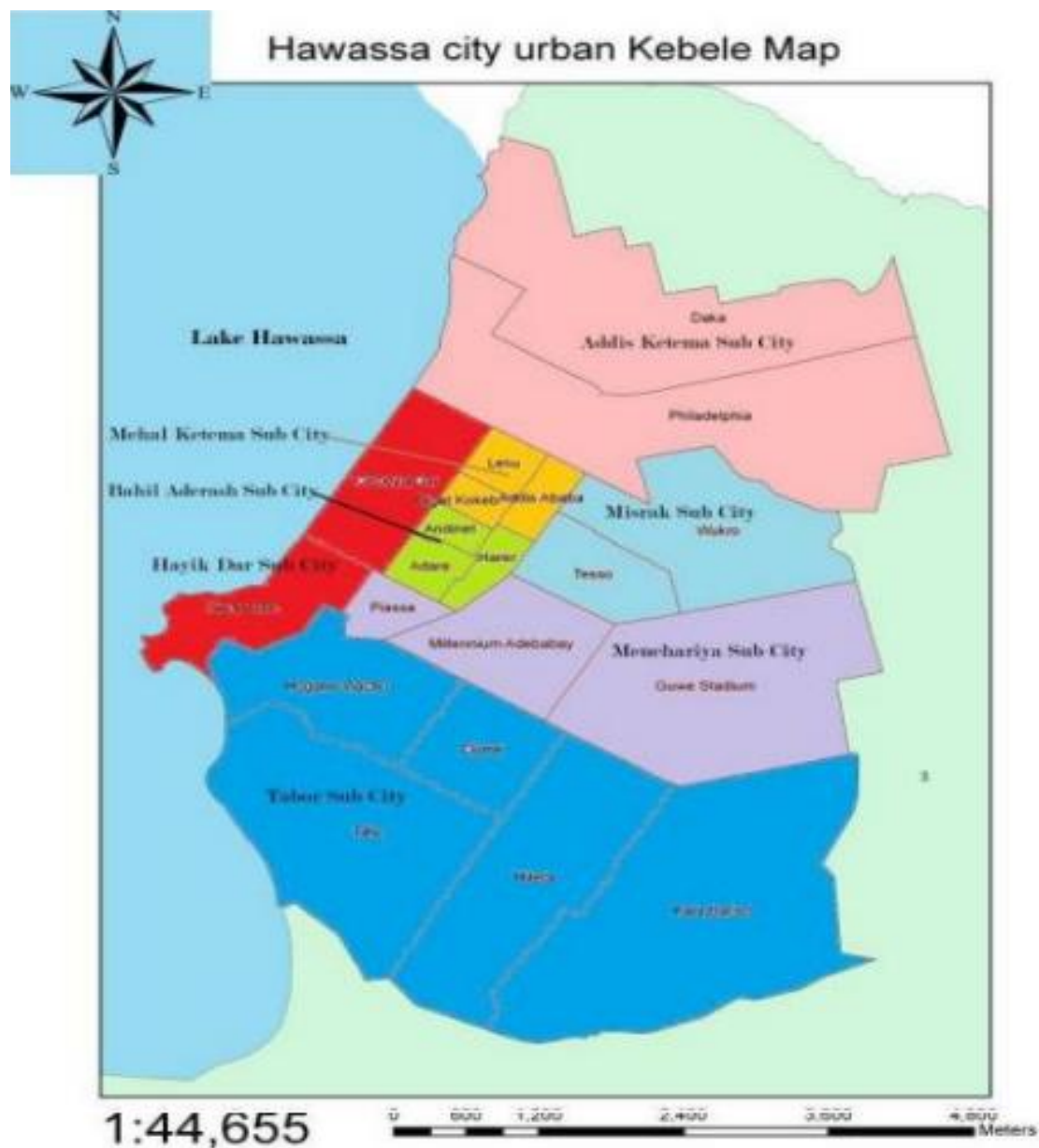
This chapter presents the contextual background of location, the site, land use or zoning and data collected from different sources that I have listed in chapter three (methodology). Those are observation, questioner and direct interview, respondents for questioner's and interview are from community members and other interested personal's that are showed willingness to answer the questions that are presented in questioner and interview type

#### 4.2 Description of the study area

Hawassa (Amharic: አዋሳ, also spelled Awassa or Hawassa) is a city in Ethiopia, on the shores of Lake Awasa in the Great Rift Valley. It is located 273 km south of Addis Ababa via Bishoftu, 130 km east of Sodo, and 75 km north of Dilla. The town serves as the capital of the Southern Nations, Nationalities, and Peoples' Region, and is a special zone of this region. It lies on the Trans-African Highway 4 Cairo-Cape Town, and has a latitude and longitude of  $7^{\circ}3'N$   $38^{\circ}28'E$  /  $7.050^{\circ}N$   $38.467^{\circ}E$  Coordinates:  $7^{\circ}3'N$   $38^{\circ}28'E$  /  $7.050^{\circ}N$   $38.467^{\circ}E$  and an elevation of 1708 meters above sea level.

The five largest ethnic groups reported in this Zone were the Sidama (48.67%), the Amhara (15.43%), the Welayta (13.9%), the Oromo (5.21%), and the Gurage (4.33%); all other ethnic groups made up 12.46% of the population. Sidamo is spoken as a first language by 47.97% of the inhabitants, 31.01% speak Amharic, 9.58% speak Welayta, and 2.07% Oromiffa;

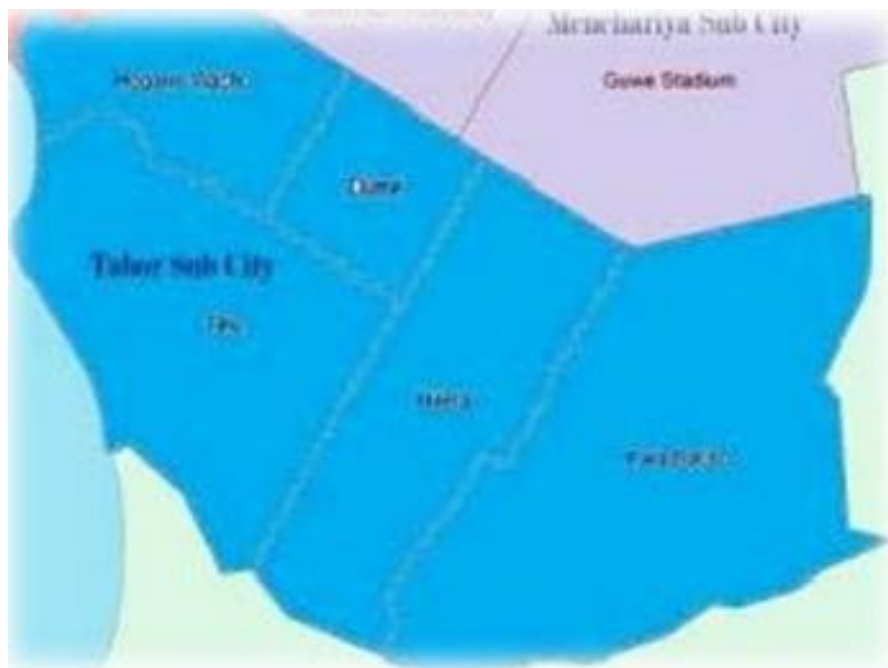
the remaining 9.37% spoke all other primary languages reported. The city administration is divided into 8 sub-cities and 32 Kebeles<sup>2</sup> (20 urban and 12 rural). The administrative land area of Hawassa is 15,720ha, with the municipal boundary (i.e. urban kebeles) covering 65 km<sup>2</sup>. The location that the research or study is held in Hawassa town, Tabor sub city, Hitata kebele. This kebele is the new residential area in Hawassa town composed of different society members



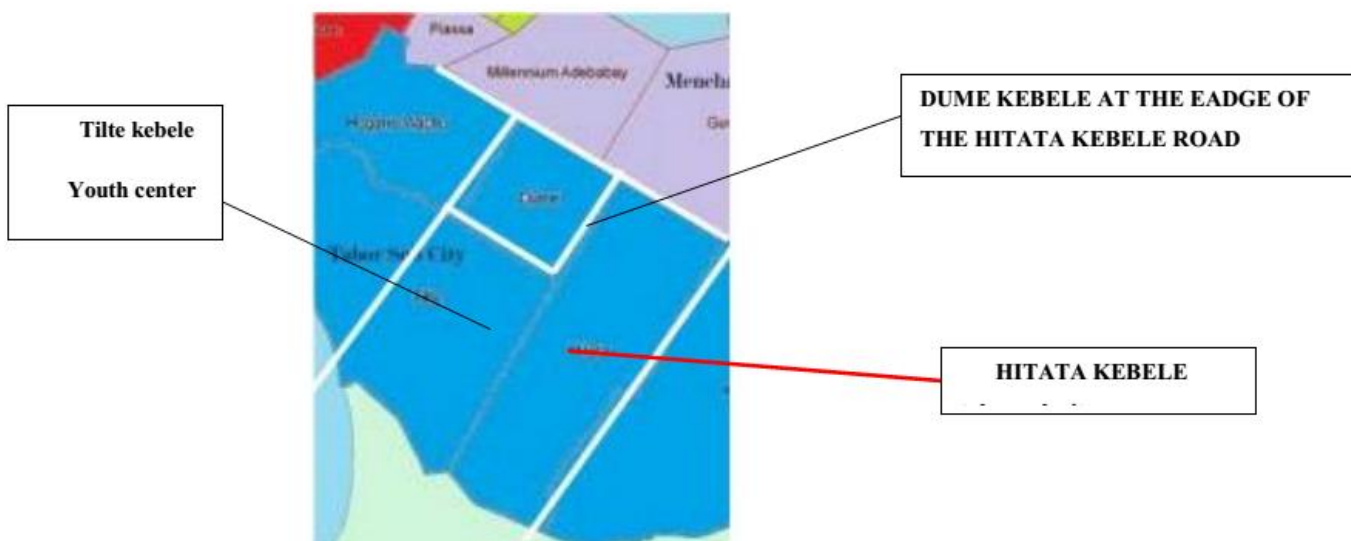
### Geography

Hawassa city is located on the shores of Lake Hawassa in the Great Rift Valley. The catchment of Lake Hawassa is formed of Pliocene-age volcanic rock. Significant faults and ground cracks in the rock result in a highly permeable soil and unconfined aquifers in the area. The depth to the static groundwater level varies from a few meters in the low-lying areas to up to 40m deep in elevated areas (Ayenew and Tilahun, 2008).





tabor sub city map



Hitata kebele is one of the kebele that are found in tabor sub city. The total population of this kebele is around 31552 according to kebeles profile of 2010 from this the number of male are 15303, and females are 16249. There are some service providing institutions in this kebeles those are listed in the table;-

Name of service providing institutions	Total number
Hotels	2
Clinic	2
pharmacy	9
schools	11
Tea hoses and cafeterias	38
<b>RELIGIONAL INISTITUTIONS</b>	
Orthodox	0
protestant	38
Muslims mosque	1

Table-3 service provided in the kebele

### 4.3 Selected area study

#### 4.3.1 Introduction

This part of the study is the stage where the site visit is conducted to around some community gathering and engagement area in hitata kebele some community. They use a space for meeting and interaction with one another. The users of these spaces are house holders in the society, and children's of the society members.

#### 4.3.2 History about the place

The history of this area is directly connected with the cultural phenomena of sidama peoples. At early time the peoples of the society is gathered and started interaction for many reasons for these interactions they use a space. These space are known by peoples by their some special characteristic's those are under trees and in front of the house of elder people in the society. By using these spaces the society share their ideas, they gather and dance, sing, it is also palace for negotiation and judgment area. Based on these history the some society of hitata kebele peoples initiated to create a space for interaction and meeting and also a place for their cultural holyday

what they call it "CHAMBELALA". These area was emerged in these past three years. The first meeting on this place is held on 2007 EC.

### 4.3.3 Site investigation

#### Location



The site is located inside the community living area. The first intention of the government to let the site empty is for a green area and children's playing ground, but

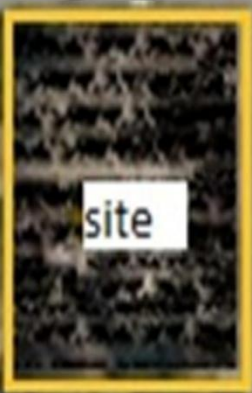
the community members makes a place an interaction and gathering area for the community.

**Physical future of the site**

Waste of space is the major problem of the site. There is much void spaces without a purpose neither green nor build.



The amount of interaction is not good especially in normal days. They lost the purpose of the place



The place is not well organized and small according to the amount of people's society living in the community



The fence of the place is made from simple woods and it's not well secured



#### 4.4 Data presentation and analysis

##### 4.4.1 Community member's assessment results

The questioner impost was seized within the community members . with in different age category and living status. I delivered the questioners home to home and by going gathering areas of youth community members. It was sideman peoples new year vibe and it made it difficult to get every members of a community at a day time and also almost all the community members are civil servant and merchants and I couldn't get all of them because they are not available at a survey time. I wanted to deliver 40 questioners in the community but by the above reasons I only get 30 respondents from the community members. Total of 30 analyses given back and they are summarized in the table below

Age group	Number of respondents from community	Male	Female
Above 30	13	8	5
Below 30	10	6	4
Below 19	7	5	2
	30	19	11

Table -4 community members questioner survey summery

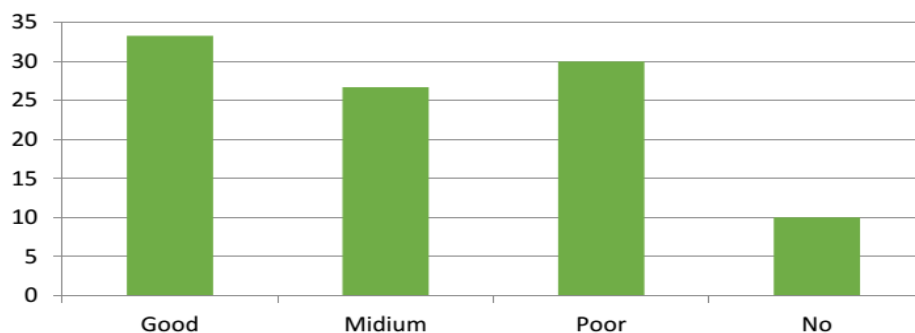
##### 4.4.2 Questionnaire

I was conducted about 12 research based questioners composed of both open ended and close ended question types. This questioner helps me to understand the real and observed problems of a community

###### 4.4.2.1 Close ended Questions types

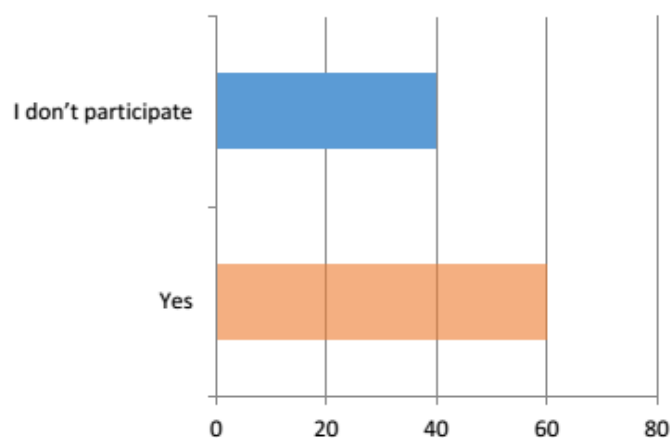
There are about 6 close ended quotations and presented by chart and description below:

#### **Q1. How do you describe your interaction with the society?**



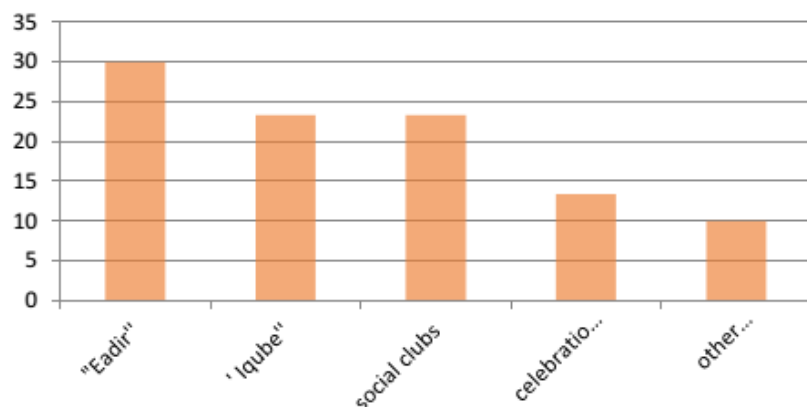
Q1.I was conducted this question to know the way how they describe their interaction among a community in different activities and services from those 30 respondent's about 10 peoples or 33.3% of respondent's have good interaction within the community by different means and about 8 or 26.6 % of respondent's from the community have medium interaction with community members and also from all 30 respondents 9 of them or 30% of the have poor relation and interaction within the community at the end about 3 or 10% of respondent's that they have no interaction within the community because of their living status.

**Q2.Do you participate in social services?**



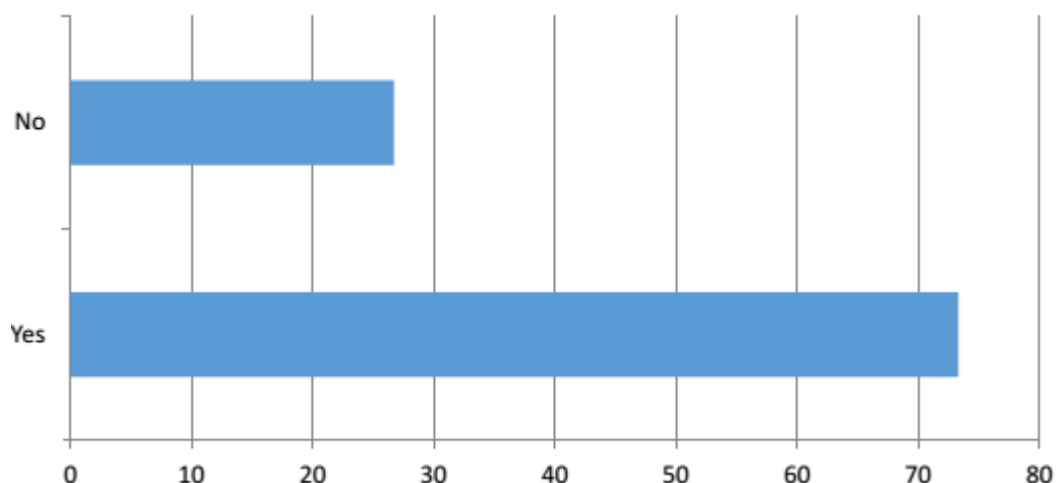
In the second questioner I needed to understand their participation in different types of social services and from 30 respondents about 17 out of 30 or 60 % of them are said yes I do participate in social activities this peoples are householders and active in the community and 13 out of 30 or 40% of respondents said No. those are youth peoples in the community and some peoples with low income in the community

**Q3. which kinds of social services do you use to meet and interact with peoples.**

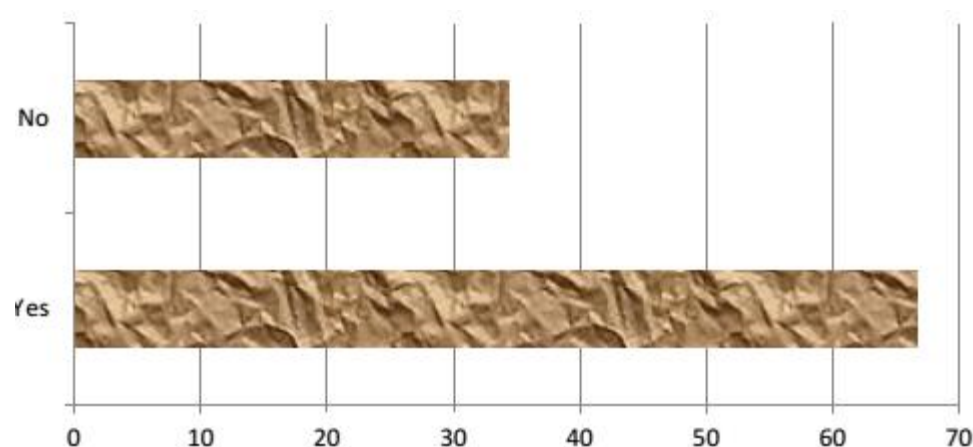


This question is intended to know the participation of a community member in social activities. These activities are "eadir", "iqube", social clubs, celebrations, and other social services. 9 or 30% of respondents use idir to meet and interact with the society, 7 or 23.3% of respondents usually prefer "iqub" and some community members about 7 out of 30 respondents or 23.3% use some social clubs to interact with people, and 4 respondents or 13.3% of respondents use some celebration to meet with people and finally 3 of respondents or 10% use other social services to meet with others.

**Q4. Does space or a place necessary to meet and interact with peoples?**



In this questioner about 73.3% or 22 out of all respondents answered yes a place or some space is must to meet and interact with people and 26.7% of respondents said a place is not necessary to interact one another.

**Q6. Does social interaction necessary among the society ?**

I was conducted this question to know the how much the community understand s and knows uses interaction among a society is necessary and how much they involve in social interactions. From all respondent's about 20 or 66.4 % of the respondents answered yes. They agreed interaction among the society is must for one society and 10 or 34.4 % respondents believed by concept of personalization they believe it is not necessary to interact with peoples in on specific place.

**7 what kinds of spaces needed to be created in order to facilitate social interaction for the society?**

The main aim of this questioner is to know and understand what peoples need to interact and communicate one another in the society. According to the survey almost all respondent's needs a place where all things are available at on place and accessible to everyone without any discrimination of age, sex, culture. In general the community needs the following things at one place and accessible for everyone in the community includes:-

- ✓ Gathering area
- ✓ Recreational areas with different activities
- ✓ Libraries and
- ✓ Common garden spaces

**8. What kind of place do you prefer to interact with others?**

The focus of this question was derived from the peoples trend and use of space what they really use frequently to meet and interact with one another. According to most of respond specially youths use some recreational and known public spaces in the community to meet and interact with peoples and in the other hand some of respondents uses only social service to interact and share their ideas. Generally the answers were almost the same that most places pointed by the respondents were interconnected to availability, safety, accessibility and comfort of spaces.

9 What are problems in social interaction?

The main aim of this question is to analyze the observed problems of a society while they making interaction and communication with one another and it help to know the direct means of problems that are decreasing their interaction among the community. They issued most of social interactions are marked only by those social service institutions. In general According to the survey among all respondents have issued the following are main problems for

social interaction are:-

- ✓ Absence of place where they meet every day
- ✓ lack of awareness about the use of social interaction
- ✓ globalization and developments

### Interview

As stated in the methodology, in this section I have conducted 5 major questions this questions are necessary and important which helps to know and understand observed problems of Hitata kebele community member's interaction. Based on those questions at least 3 bodies will be interviewed. Those bodies are one from community members, one from the kebele administration and another from hawssa town social affairs expert. From those I interviewed two of them .those are person from community member and another from kebele administration social expert.

### **Interview with kebele administration social expert.**

My interview was Ato bekele dokamo the social affairs expert at hitata kebele..in general he clearly reflected his opinion according to his profession and

understanding which is good for the community the question and answer of this interview is presented below;

**Q1 what kinds of places needed to be created to bring together and connect the society?**

In general peoples one another interaction within the society is very essential thing for theirs hared development. It is respectable creating a Places like recreational and social interaction places with including all age groups. He said that now a time in this community a lot of interactions are made only in social service activities like “idiear” and “iqube” these activities are not enough to guarantee the interaction among the community.

**Q2 how close would bring the society by creating them comfortable interaction space?**

No one dislikes comfortable spaces or places to meet and interact with peoples. Any body needs these kinds of spaces to interact and share what he have and receive information from other. And amount of comfortable place to interact with others it would bring the society close by upgrading

their minds to the use and understand of these types of spaces for wise use of social interaction.

**Q3To assure peace among the society what is the role bringing them together?**

Peace is the living breath of one’s community and country without peace there is no country or community in social communication and interaction peace is the basic thing to be observed in the society. Making interaction with one another is best to know each other closely and these make to know common problems in the society and bringing the society together these helps to specifically know problems and it helps to give a solution for problems easily. At all creating a place which increases the interaction within the society assures peace of one community.

**Q4.how social interaction places assure the economy of the society?**

In my point of view assuring the economic status of a community by crating comfortable places plays significance role because when we create comfortable and commune social interaction spaces we increase the peoples going to those spaces at that time some service providers from the community get income from users of that space depending on these relation we increase and upgrade the economic status of the community. Economy status of the community does not depend on those spaces but those spaces increase the relation of providing services and getting the right income for that service.

**Q5. What does the government thinking in creating comfortable spaces for the community?**

At these time our kebele does not thinking to create those kinds of spaces for the community but we are trying to apply some strategies that are coming from the above governmental bodies and they mainly focusing on youth centers not common space for the community which considers all ages.

## CHAPTER FIVE

### 5. RESERCH FINDING AND CONCLUSION

#### 5.1 Summary of findings

In this part the findings from the analysis of the society of hawssa town specially may case area hitata kebele will be summarized. The findings are specially based on the questioner and interview responses from the selected society and also some fining will be presented from observation and then in the conclusion part all the data will be concluded by substantiating the literature review and the case study

#### Findings

- 1. The society needs a place where all things are available at a place and accessible to everyone but there is no such kinds of place for the community.**
- 2. Lack of required facilities which can gather the community members every day to meet and interact one another**
- 3. According to the size of the population there is no enough space provided for the community.**
- 4. Nonexistence of community engagement and empowerment spaces which helps the community members actively participate in all social services that are provided for the community.**

#### Conclusions

In conclusion, community or neighborhoods is a distinctive thing in one country. Several individuals live in the community but are not a portion of a community. Which means they does not participate and actively involved in the community activities these is because of lack of interaction with one another in the community. Creating physical spaces increases the interaction of the community.

To upgrade and increase the interaction and communication within the society it is essential to provide a space which facilitates the needs of the society. Places Like where people come together to get amenities, interaction and meet one another. When creating such kinds of spaces it does not mean all are the same as another social interaction spaces. Every such social interaction spaces provide different services, programs and other social activities it depends on the real and observed need of a

community. such kinds of diversified services allows social interaction spaces or community communal place plays a significant part in the community and developing social interaction, economic opportunities and social unity in the community.

## **CHAPTER SIX**

### **RECOMMENDATION**

In this section the paper work recommends an architectural solution which answers the findings and need of a community which is analyzed in the above chapter. Generally the whole finding leads this study to recommend a social space which provides different activities like recreational areas, library, halls, and other social service provider institutions. These programs are developed from the whole data analysis prose .in the previous chapter the study showed the definition and facilities of community center should. Based on these the study recommends a community center to facilitate the need of a community. This community facility must use to

1. Build knowledge and mutual trust through ongoing neighborhood engagement and interaction by providing inclusive spaces, outdoor and indoor facilities.
2. Hold a flexible form that allows programs and services to constantly progress to reflect the needs exact to the community being functioned.
3. Making a community itself to recognize the significance of community engagement to center sustainability and success.
4. Create where possible center that is resident driven, engaging, inclusive, accessible and highly visible (i.e., central to the neighborhood)

## CHAPTER SEVEN

### 7 DESIGN PROPOSAL

#### 7.1 Design principles

The whole point of creating a community center is to have people participate in it. That means they need to know it's available and that it offers something they want to be part of it. That's why engagement is important. For these purpose there are some design principles generated to fulfill and maintain the need of the community.

These principles underpin any planning for a community center.

##### 1. Sustainability

- ✓ Ensure sustainable and financially responsible provision of facilities
- ✓ environmentally sensitive design principles in developing, managing and maintaining the community interaction

##### 2. Efficiency

- ✓ Maximize use and sharing of facilities between user groups

##### 3. Equity, accessibility and inclusiveness

- ✓ Ensure facilities are safe, accessible, affordable and attractive to people of all ages, abilities and interests

##### 4. Diversity

- ✓ Expand the range of active and passive recreation opportunities.

##### 5. Protection/stewardship of environmental and cultural assets

- ✓ Preserve and enhance the qualities, including recognition of any culturally significant and/or indigenous places Continue to improve the landscape and amenity

##### 6. Innovation and creativity

- ✓ Retain open space to provide for flexible and passive recreation activities

##### 7. Participation and wellbeing

- ✓ Encourage physical activity by improving walk able paths in the center
- ✓ Provide for the sporting needs of the surrounding
- ✓ Provide a range of quality opportunities for participation, ensuring the center is a destination of all community.

### 8. Integration of social interaction

- ✓ Creating proper spaces in order to maintain and increase the interaction between the community is the prior thing in designing a community centers

### 9. Meet the needs of a Changing Community.

- ✓ Programming and facilities are designed to respond to the needs of the community, with the shape. And functioning of facilities provided as a community changes the service and facilities must adapt.

### 8 .Continuity and unity - variety and contrast

- ✓ Although these may seem like contradictory qualities, a successful design will typically establish a unifying theme while maintaining interest through the use of contrasts and variation in elements.

## 7.2 Architectural Design

### 7.2.1 Site selection

The project site has been selected based on the following criteria that are focused on the whole society more suitable for all by making a place accessible and efficiently functioning.

#### Site selection criteria

1. Master plan of the city recommends this place as a community facility space or the land use is good enough criteria to choose the site.
2. Good vehicular access and walk able connections are to be available for residents to public transportation and other community resources
3. Sites should exhibit no obvious negative environmental influences, which cannot be corrected or acceptably diminished.
4. Proximity to Population to be served in the site if the community center is built it good place.
5. Site Topography: these is the basic thing to design any project. the topography of this site very good to adopt any project
6. Good infrastructure's, like roads water supply, electric power, drainage....etc.

### 7.2.2 Site Analysis

#### Site location

According to the site selection criteria the site I selected is found one of hawaasa big sub city

(Tabor sub city, tilte kebele)

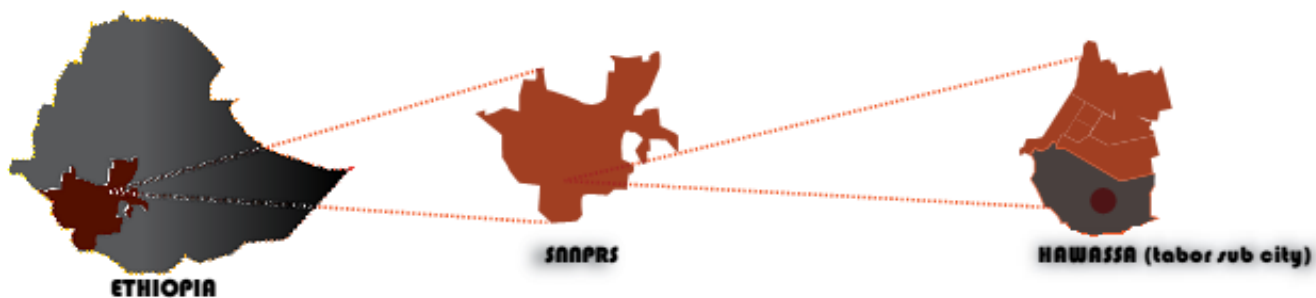


Figure 26 site location

Awasa (Amharic: አዋሳ, also spelled Awassa or Hawassa) is a city in Ethiopia, on the shores of Lake Awasa in the Great Rift Valley. It is located 273 km south of Addis Ababa via Bishoftu, 130 km east of Sodo, and 75 km north of Dilla. The town serves as the capital of the Southern Nations, Nationalities, and Peoples' Region,.

The site is accurately found at the intersection of between three kebeles of tabor sub city which are hitata, dume and tilte kebeles. In these area there is high number of population located.



Land use



**RESIDENTIAL BLOKS**  
 G+0 residential buildings  
 G+0 residential + shops  
 G+0 residential + green areas



**Educational ins.**  
 High schools  
 Primary Schools  
 kindergardens

Land use

The site is located in the middle of residential districts and also proposed as service center for the community around the site. depending on the residents there are some educational institutions which are provided for the community

Accessible Paths Around The Site



PEDESTERIAN PATH

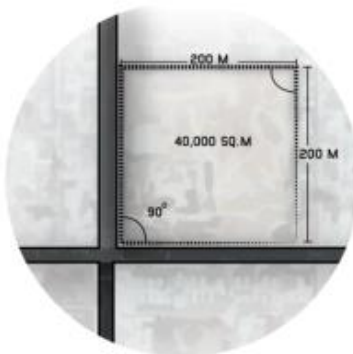
- █ PRIMARY PATH (4 - 6 m)
- █ SECONDARY PATH (3 - 4 m)
- █ TERTIARY PATH (1.5 - 3 m)



VEHICULAR PATH

- █ PRIMARY PATH (14 - 18 m)
- █ SECONDARY PATH (5 - 8 m)

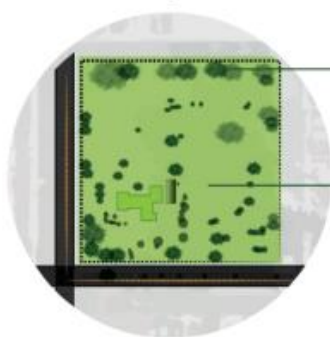
SITE DIMENTION



SITE DIMENTION

The selected site has 40,000sq.m net Area. and it is square formed

Grennery distribution on the site



**Grennery**  
There are diffrent types of green plants located on the site.all most ful of the site is coverd with grass.

- LEGENDS**
- Large trees
  - Small trees

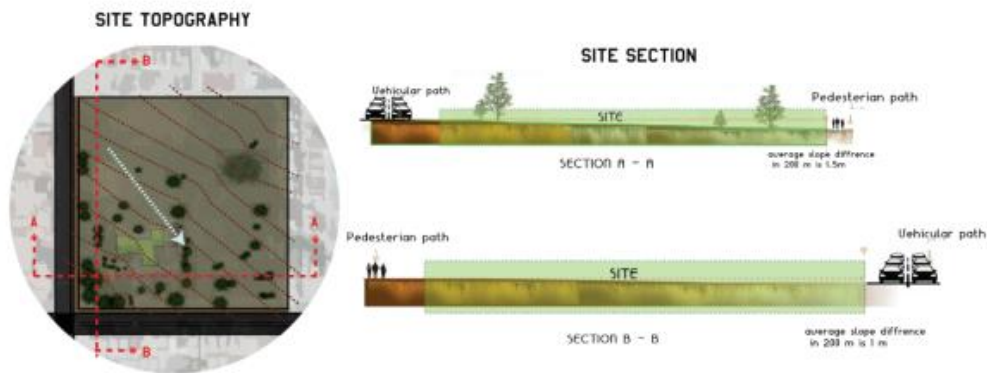


Figure 28 land use and path

**Site analysis**

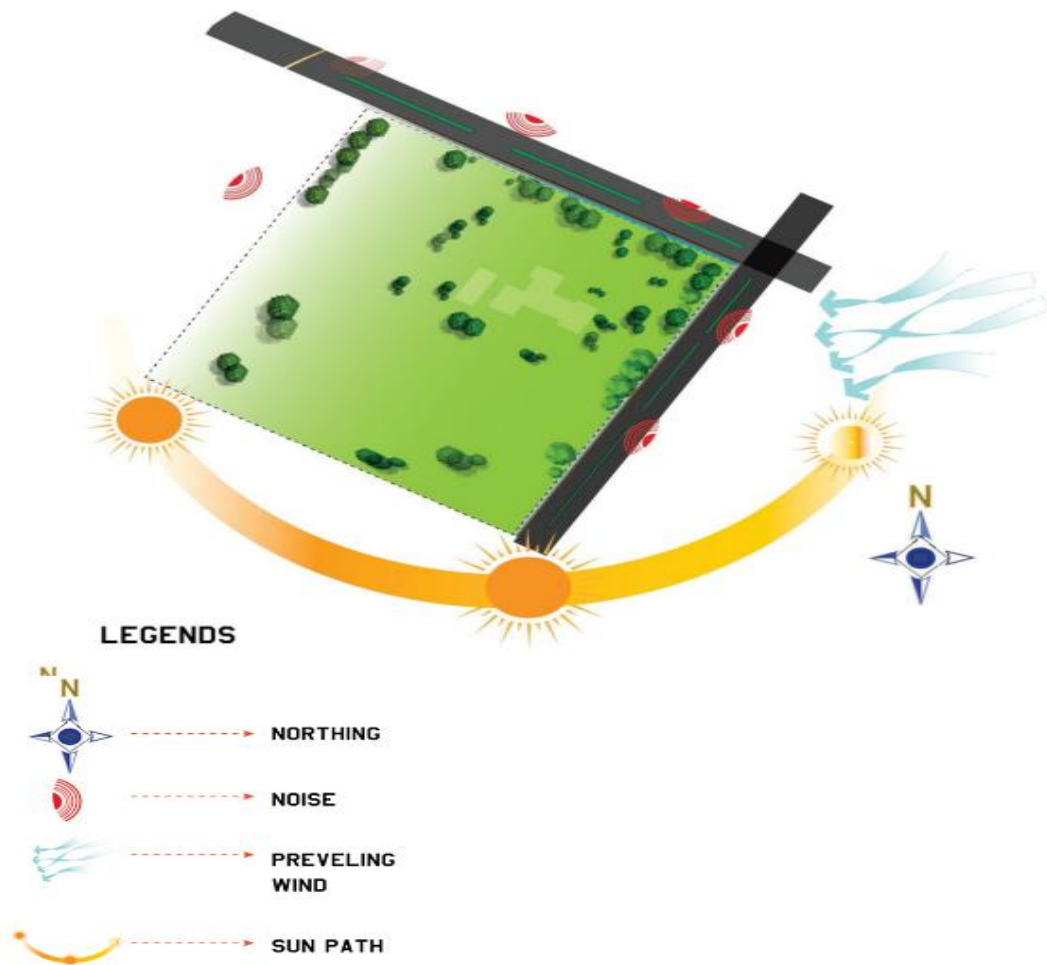


Figure 28 site analysis

### 7.2.3 Program development

The program provided in the community center contains a number of community facilities that are well distributed and developed depending on general, specific objective, findings and recommendation of the paper it includes,

- ✓ Facilities that cater to people with disabilities and older people
- ✓ Meeting rooms and accommodation rooms
- ✓ Large activity space (e.g. for martial arts, fitness)
- ✓ Indoor and outdoor space for formal youth activities as well as informal activities (e.g. socializing/'hanging out', studying, events)

The whole program depends on the following four basic zones:-

- ✓ Administration zone
- ✓ Recreational Zone
- ✓ Community activity zone
- ✓ Educational facility Zone









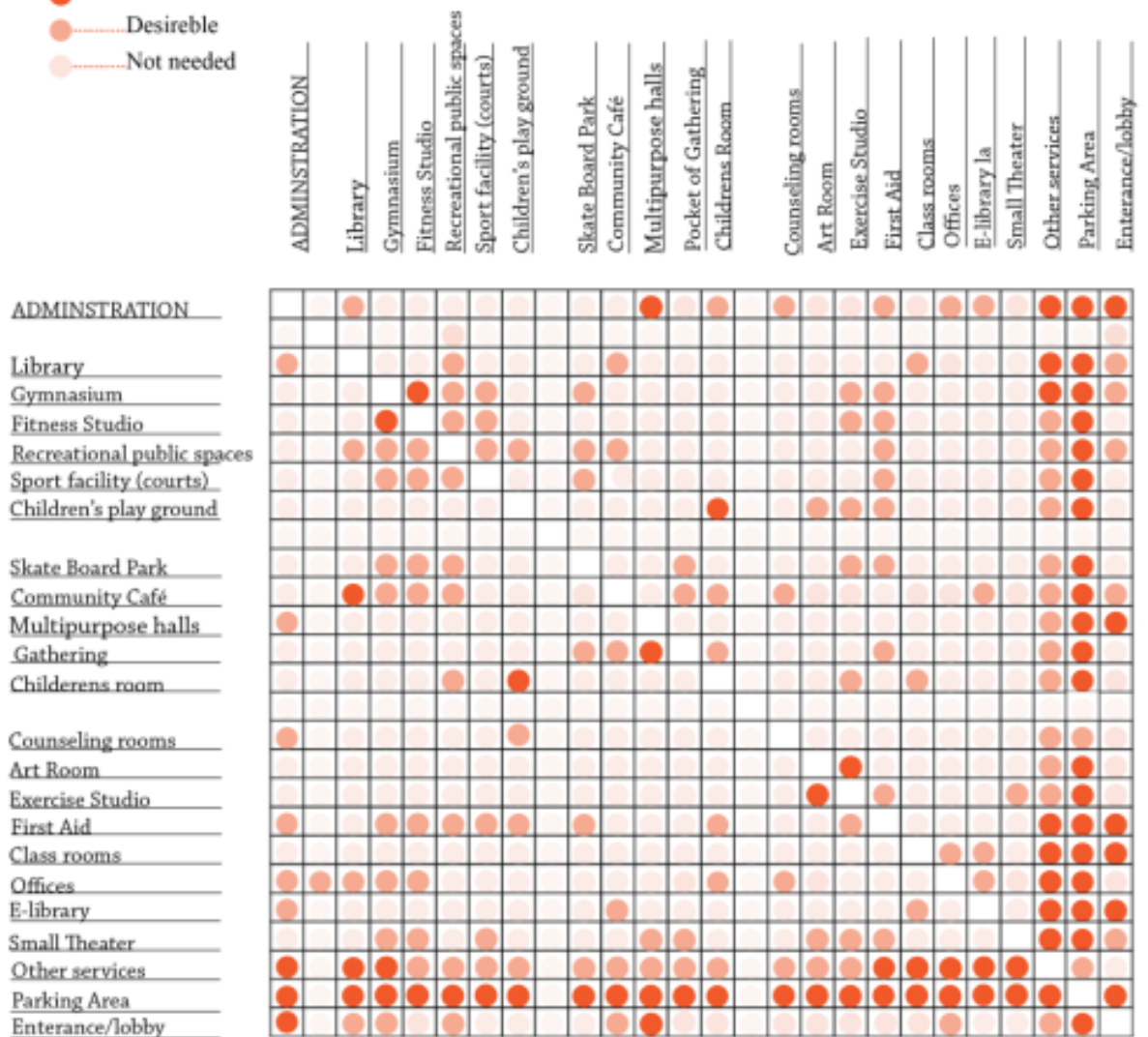
<b>EDUCATIONAL</b>					
	1	Reception and lobby	57	1	57
	2	Book Shelf area	80	1	80
	1	Library Reading Hall	280	2	560
	2	Break Area	31	2	62
	2	Book store	32	1	32
	3	Staff Room	12	2	24
	4	Office	12	1	12
	5	Archive	10	1	10
	6	Group Reading Hall	60	1	60
	7	Library manager office	18	1	18
	8	Teachers office	20	1	20
	9	Class Room A	40	2	80
	10	Class Room B	20	1	20
	11	Office	16	1	16
	12	E-library Hall	226	1	226
	13	Personal lab	50	1	50
	14	Control Room	43	1	43
	15	Server Room	18	1	18
	16	janitors	14	2	14
	17	Store and maintenance	28	1	28
	18	utility	14	1	14
	19	Public toilet	41	3	123
	17	Staff toilet	41	1	41
<b>TOTAL</b>					1628

<b>Other services</b>					
	1	Maintenance and Repair	50	1	50
	2	Emergency Generator room	30	1	30
	3	Storage	20	1	20
		Total			100
<b>GRAND TOTAL AREA = 9341 m2</b>					

<b>Parking and Traffic System</b>					
	1	Parking Area including circulation	30.5	30	915

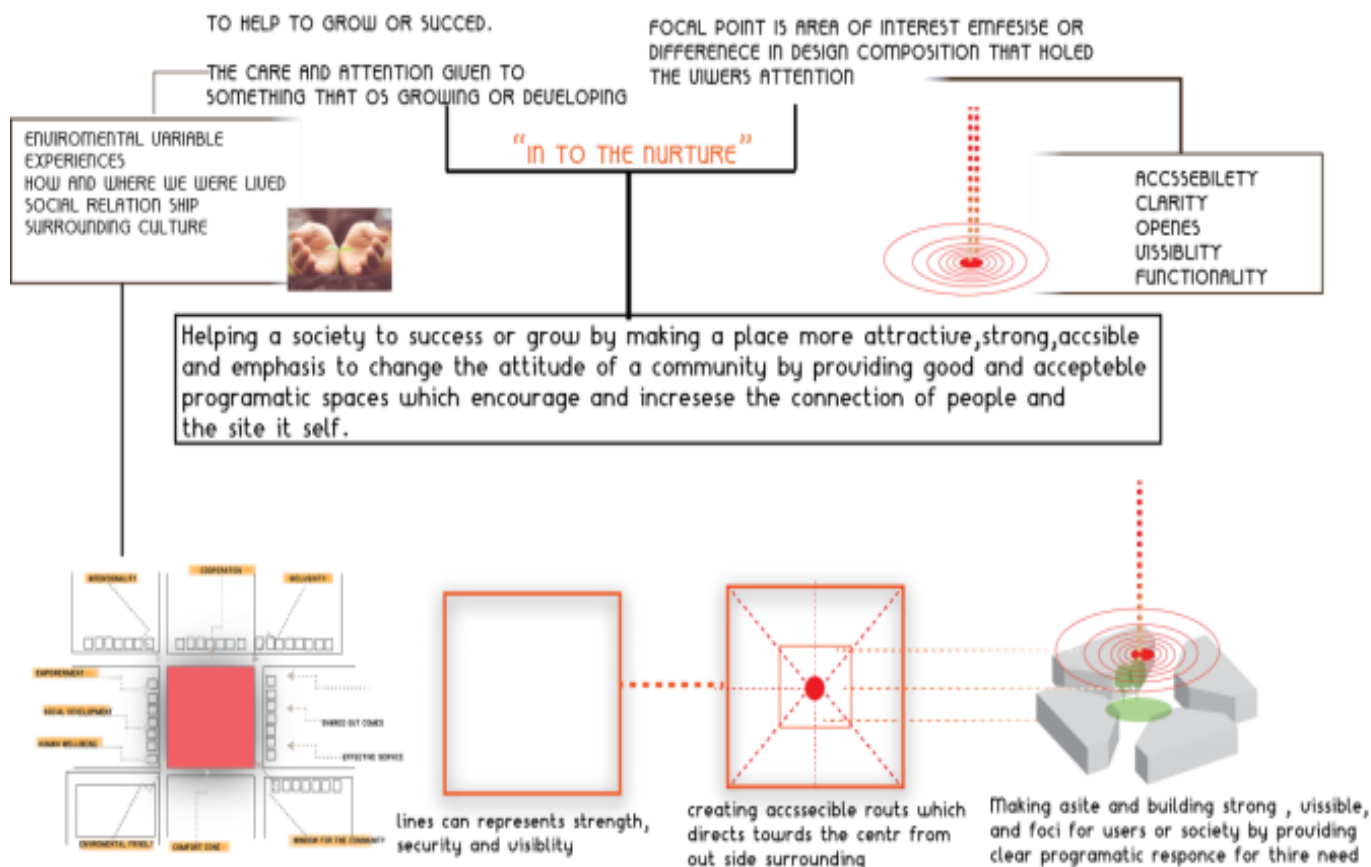
Programs interaction matrix

- Essential
- Desirable
- Not needed



7.2.3 Concept Development

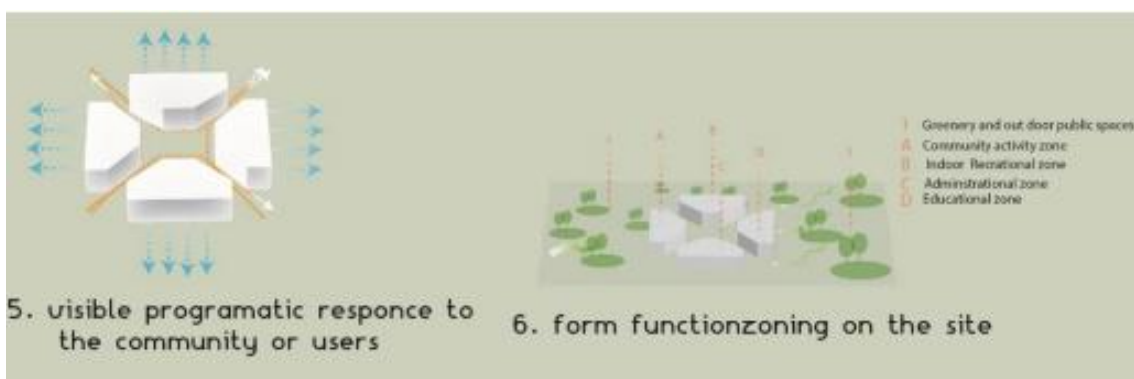
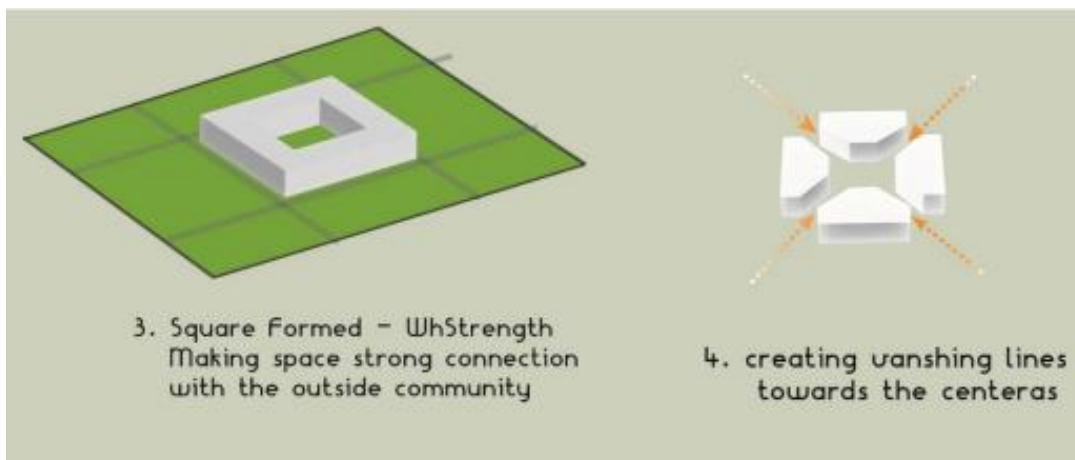
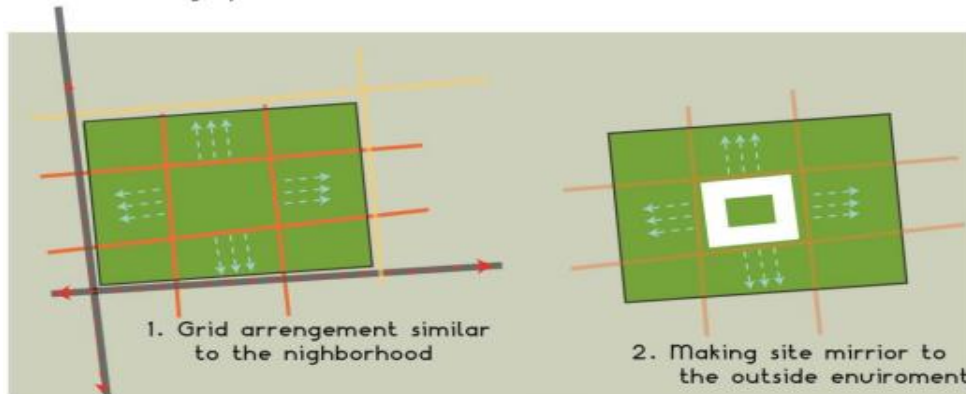
nURTURE + FOCAL POINT



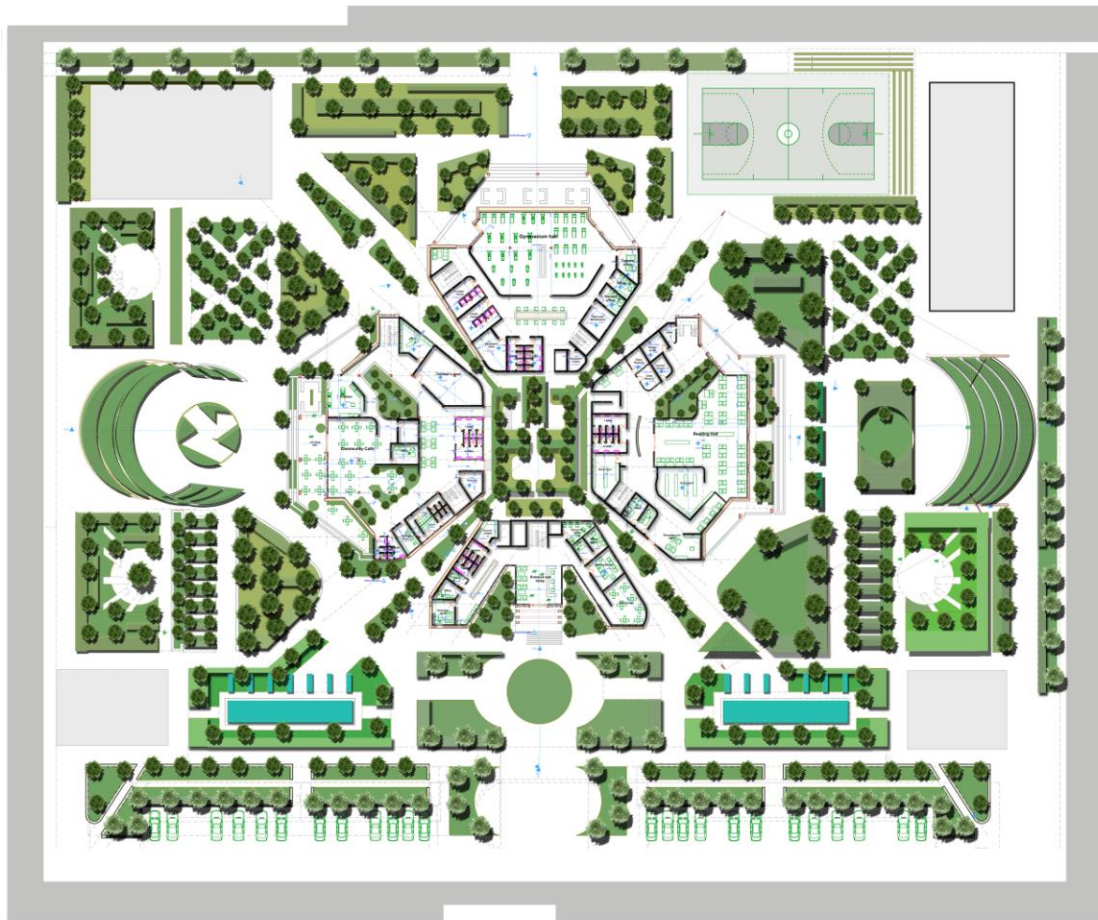
### 7.2.4 Form Development

Form development process

The form is developed depending on site arrangement and structure of the site location. this form development also integrates the concept of the whole design process



**7.3 DESIGN DRAWINGS**



1ST FLOOR PLAN

2ND FLOOR PLAN

ROOF PLAN

ARCHITECTURAL THESIS WKU COLLEGE OF ENGINEERING AND TECHNOLOGY  
DEP. ARCHITECTUR

SUPERVISOR AMHASELASSE

NAME ABENEZER MARKOS  
ID 050 /07

DATE 18 /10/2011



the building has a framed concrete structure  
-the longest span between columns is 10 m  
-the shortest span between columns is 5 m



VEGETATION TYPE TO USE

Height = 4-5m Width = 3-4m Leaf = 10-15cm	Height = 1-1.5m Width = 1-1.5m Leaf = 10-15cm	Height = 1-1.5m Width = 1-1.5m Leaf = 10-15cm	Height = 1-1.5m Width = 1-1.5m Leaf = 10-15cm	Height = 1-1.5m Width = 1-1.5m Leaf = 10-15cm
For use in shaded areas and high humidity	For use in open areas and high humidity	For use in open areas and high humidity	For use in open areas and high humidity	For use in open areas and high humidity

ROOFING SYSTEM LAYERS

ROOFING SYSTEM LAYERS



ARCHITECTURAL THESIS WKU COLLEGE OF ENGINEERING AND TECHNOLOGY  
DEP. ARCHITECTUR



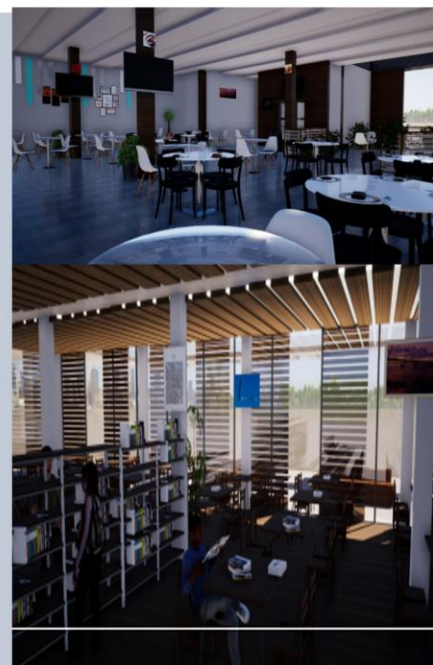
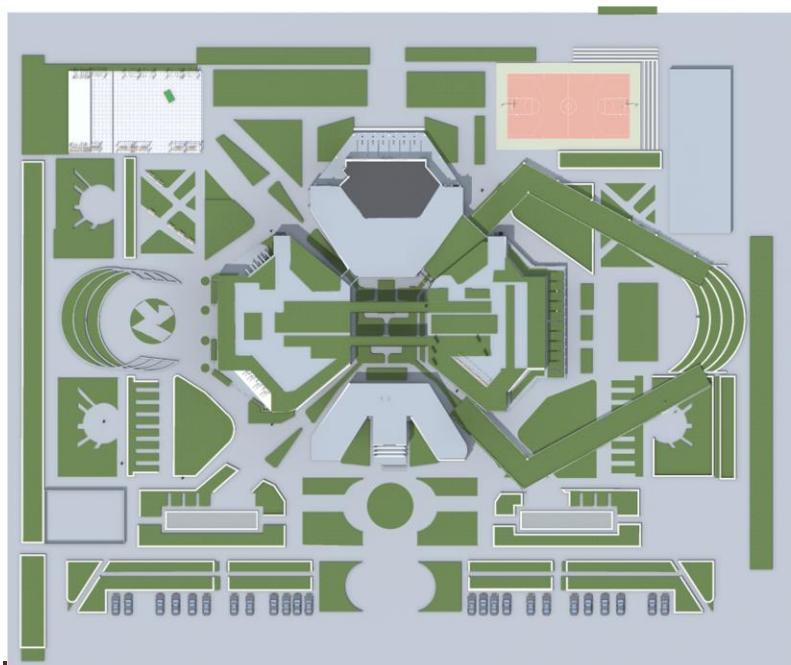
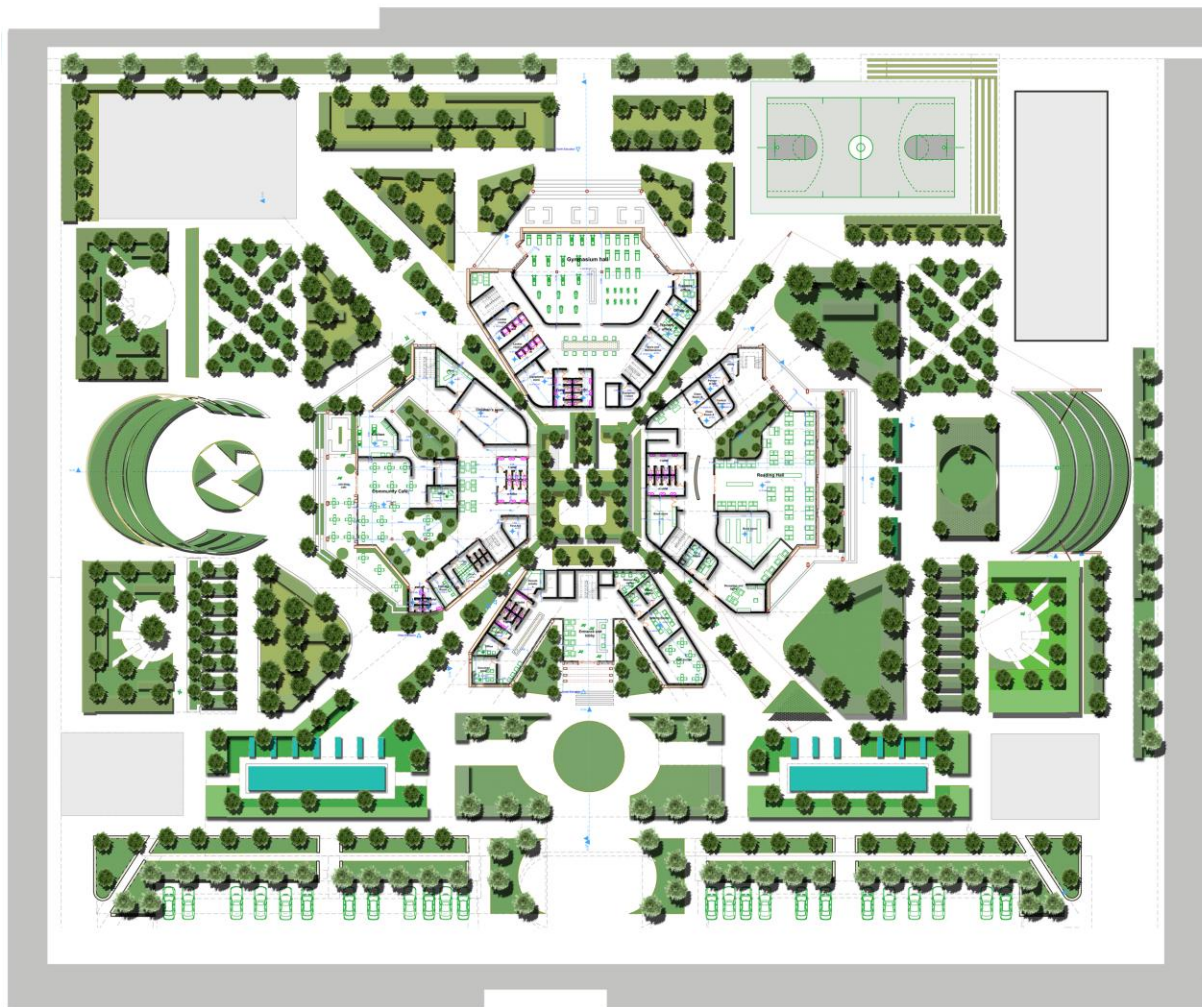
SUPERVISOR .AMHASELASE

NAME ABENEZER MARKOS  
ID 050/07

DATE 18/10/2011







**Reference**

Schelling (1971). Social interaction

(By Dr.Ehap elhawari 24 oct 2017). Meaning of social interaction

Ted Bundy (2012) social interaction and communication

Zeisel, (2006) Part of a post-occupancy evaluation

Hennery c.(community hubs by design p.1)

(Omar, 2014).

(Ayuba et. al., 2014).

(Sarokhani, 1993). Human communication art

Aristotle (2300 years ago) RITORIGHA

(Mohsenianrad, 1995). Communication and culture for development

Lewin (cited in Staats, 2004) From wikipedia

(Mohamad, et al., 2014). From wikipedia

(Husain, et al., 2014). Developing a strong bond and a quality relationship.

Winston Churchill, (addressing the English Architectural Association, 1924)

pratyaksh sharma (The self-sufficient habitat from the city to the building )

Saieh, N. (25 Apr 2010). Surry Hills Library and Community Centre / FJMT Arch Daily, C.

(February 13, 2012). West Vancouver Community Centre / HCMA. Arch Daily.

Altman, I. (1975). The Environment and Social Behavior. Monterey, CA: Wadsworth.

Dunlap, D. W. (1997). Architecture in the Age of Accessibility. New York Times, p. June 1

Frug, J. (1996). The Geography of Community. Stanford Law Review, 48(1047-1108).

**Appendix**

**Questioners**

መጠይቅ

**ከማህበረሰብ ለተወጣጡ ሰዎች የሚቀርብ መጠይቅ**

ክቡራን የማህበረሰቡ አባላት

እኔ የአምስተኛ አመት የኪነ-ህንጻ ተማሪ ስሆን “ RIVITALIZING COMMUNAL SPACE IN CASE OF HAWASSA ”

በሚል ርዕስ ላይ ጥናት በማድረግ ላይ እገኛለሁ። በዚህም ምክንያት እንደ አንድ የማህበረሰብ አባል የሚከተሉትን

ጥያቄዎች በመሙላት ትብብሮን እንዲያሳዩኝ በትህትና እጠይቃለሁ። የእናንተ ትብብር የማህበረሰቡን ችግር ለማወቅ እና አስፈላጊውን መፍትሄ ለመሰጠት እጅግ ጠቃሚ ነው።

ይህ መጠይቅ ለትምህርት አላማ ብቻ የሚውል ነው።

ሀ. የግል መረጃ

**1. ጾታ**

ወንድ ሴት

**2. እድሜ .....**

**3. የትምህርት ደረጃ .....**

ለ. ጥናት ላይ የተመረከቱ መረጃዎች

**1. ከ ማህበረሰቡ ጋር ያለህ/ያለሽ ግኑኝነት ምን ይመስላል?**

ጥሩ መካከለኛ ደካማ የለኝም

**2. በ ማህበራዊ ጉዳዮች ላይ ትሳተፋለህ/ሽ?**

አዎ አልሳተፍም

**3. ከሰዎች ጋር ለመገናኘት የትኛውን የማህበራዊ ስፍራ ወይም ጉዳይ ትጠቀማለህ/ትጠቀሚያለሽ?**

ዕድር ዕቁብ ክበባት ባህላዊ በአላት ሸማቾች ማህበራት

**2.1 አንዱን ከ መረጡ ምን ምን አይነት ነገሮችን በ ማድረግ እንደሚያሳልፉ ቢዘረዝሩ?**

.....  
.....

**4. ከ ሰዎች ጋር ለመገናኘት እና ለመግባባት ቦታ ያስፍልጋል?**

አዎ አያስፈልግም

5.ለ ጥያቄ ቁ.4 አዎ ከሆነ ለምን?

.....  
.....

6.በ ማህበረሰቡ ውስጥ የእርስ በእርስ ግኑኘነት ያስፈልጋልል?

አዎ አያስፈልግም

7. ለ ጥያቄ ቁ.6 አዎ ከሆነ

ለምን?.....

.....  
.....

8.የማህበረሰብ ግኑኘነት የማህበረሰቡን ሰላም ያረጋግጣል?

አዎ አያረጋግጥም

8. 1ለ ጥያቄ ቁ.8አዎ ከሆነ ለምን?

.....  
.....  
.....

8.2 ጥያቄ ቁ.8 አያረጋግጥም ከሆነ ለምን?

.....  
.....  
.....

9.ምን አይነት ስፍራዎች ቢፈጠሩ ማህበረሰቡን ያቀራርባሉ?

.....  
.....  
.....  
.....

10. ከ ሰዎች ጋር ለመገናኘት ምን አይነት ስፍራዎች ትመርጣለህ/ትመርጫያለሽ?

.....  
.....

.....  
.....

**11.**ከ ሰዎች ጋር ለ መግባባት ምን አይነት መንገዶችን ትጠቀማለክ?

.....  
.....

.....  
.....

**12.**በማህበራዊ ግንኙነት ውስጥ ያሉ ችግሮች ምንድናቸው?

.....  
.....

.....  
.....