



Wolkite University

College of engineering and technology

Department of architecture

A THESIS RESEARCH PAPER SUBMITTED TO THE DEPARTMENT OF
ARCHITECTURE WOLKITE UNIVERSITY IN PARTIAL FULFILMENT FOR

BSC DEGREE IN ARCHITECTURE.

Title The challenges of contemporary street as public space

In case of wolkite

By |Befikadu Tsegaye

Id no 124/06

Advisor Ar. Tadele Ayele

June 2019 wolkite Ethiopia

**(Title) The challenges of street as public space
In case of wolkite**

By Befikadu Tsegaye

Major Advisor: arc Tdele Ayele (___)

Co-advisor(s) : _____(___)

June, 2019

Wolkite, Ethiopia

Acknowledgement

First of all I would like to give great thank to almighty God for his unlimited support. Next I have a great thank for my adviser Ar. Tadele ayele. he have a great role in the whole researching process and supported me without tiredness giving his time and consulting me in all research making procedures starting from the beginning up to this final presentation day, so I need to express again my great appreciation and thank to him.

Abstract

Urban planning and design has proven to be an important element in shaping life styles, solving problems and giving new ways of living in the urban area. The quality of urban life is one of the big goals that the field tries to reach. At this point, the role of urban public spaces in social life has become more prominent and significant. Issues of social life in public spaces and the relations with creating a vibrant and dynamic city has not been given too much attention in urban planning and design.

This thesis raises the question of considering public spaces and how urban public spaces (especially squares) can encourage/persuade citizens to increase social interaction. Thereafter, the study addresses effectual factors from the human perspective which can help to achieve the successful design of an urban public square. The aim of the work is to comprehend how it might be possible to improve social life and behaviour in public spaces (squares) and consequently to attain a framework in order to design. Generally the overall study analyses and concludes by developing a mechanism to achieve a better method of reducing the problems in wide aspect of their visions.

Contents

CHAPTER ONE	- 4 -
1.1 Introduction	- 4 -
1.2 Problem Statement.....	- 5 -
1.3. General Objective	- 5 -
1.3.1 Specific objective	- 5 -
1.4. Research Questions	- 5 -
1.5. Significance of the Study.....	- 6 -
1.6. Scope and Limitation	- 6 -
Chapter two	- 7 -
2.1 METHODOLOGY.....	- 7 -
2.2 Purpose of Data Collection	- 7 -
2.3 Data collection methods.....	- 7 -
2.4 Data Analysis Technique.....	- 8 -
2.5 Research.....	- 9 -
Collection technique	- 9 -
2.6 Research design	- 9 -
CHAPTER THREE	- 10 -
Literature Review.....	- 10 -
3.1 Introduction	- 10 -
3.2 What is a Public Space?	- 10 -
3.3 Understanding Public Spaces.....	- 10 -
3.4 Public Space and Society.....	- 10 -
3.5 Streets.....	- 12 -
3.5.1 Street Vending	- 12 -
3.5.1 Challenges of street vending	- 13 -
3.6 TYPES OF SOCIALIZATION SPACES.....	- 13 -
3.6.1PARKS	- 13 -

3.6.2 PUBLIC OPEN SPACES.....	- 14 -
3.6.3PLAYGROUNDS	- 15 -
3.7 PLAYGROUND, ACTIVITY SPACES AND ELEMENTS	- 16 -
CHAPTER FOUR.....	- 17 -
Case Study	- 17 -
Local case.....	- 17 -
4.1 Meskel Square at Addis Ababa	- 17 -
4.2. Development of the square	- 17 -
4.3 Meskel Square Today.....	- 18 -
4.4 Day to day functions of the Square.....	- 18 -
4.4.1 Sport activity(function	- 18 -
4.5 Recommendation for Meskel Square.....	- 18 -
International case	- 19 -
4.6 CASTLEMILK	- 19 -
CHAPTER FIVE.....	- 21 -
Contextual Background	- 21 -
5.1 Historical Development of Wolkite City.	- 21 -
5.1.2 Naming of the town.....	- 22 -
5.1.3 Current Public Space in wolkite.....	- 22 -
5.1.4 Existed Green and Open Space in wolkite city.	- 22 -
5.1.5 Commercial Activity of the town.....	- 23 -
CHAPTER SIX	- 24 -
RECOMMENDATION AND CONCLUSION	- 24 -
6.1 Recommendations	- 24 -
6.2 CONCLUSION	- 24 -
CHAPTER SEVEN	- 26 -
7.1 DESIGN PROPOSAL.....	- 26 -
REFERENCE.....	33

CHAPTER ONE

1.1 Introduction

Wolkite town lacks open spaces, green areas and recreational areas (plays ground). The number of open spaces and play grounds are very small. During our site visit, we observed children and youth use the open field and road side for playing football. This is due to the fact that almost every part of the action area is covered with structures (buildings). Open space and green areas are major element of neighbourhood. In any residential development these elements are crucial, even on the structure plan of the town indicates not only to have green and open space at neighbourhood level but also at plot level. Green space is a vital part of the public realm. Attractive, safe and accessible green spaces contribute positive social, economic and environmental benefits, improving public health, well-being and quality of life

.City green space is also vital for the inhabitants since it provides such benefits as recreational and educational opportunities, aesthetic experiences, and provides psychological satisfaction and social interaction as well as maintains environmental balance. Greens in a city are necessary not only to cool down the stressed human brain, but also the temperature peaks of build areas. In planning area, open space was not observed. It means there are no recreational facilities or open and green spaces in the area. Lack of open spaces can oblige teenagers to frequent places of adults. The probability of adults to be obliged or affected by drug abuse is relatively high areas where open spaces and recreational spaces are rare. Therefore, green areas and open spaces should have to be considered as important issue for a future due attention.

In the world of today, urban planning and design has shifted into a new concept that incorporates the safe usage of the environment in a way that is sustainable. In urban planning and design projects around the world, the quality of urban life is given much attention than ever. It is understood that the health of a city, its economy and environment is improved more by a properly designed and implemented master plan incorporating environmental issues. One of the ways to increase the quality of urban life is the introduction of urban open spaces and green areas in cities. These include squares, green corridors, urban parks, urban zoos and street greeneries. Studies show that cities which are designed with the above elements in consideration have improved health status in the public, low stress level in the society, decrease pollution and generally enhanced quality of life.

The aim of this paper is to formulate a research around the past and current use of urban open spaces, specifically by taking a public square in Wolkite city as a case area for the study. Knowing the existing culture of the people in using the square will give an input for future planning and design of squares and other public spaces in the city.

1.2 Problem Statement

According to the day to day activity of the people there are different layers of activities on street of wolkite which are not well organized public (open)spaces , so this disturbs one another. The other problem is the wolkite which are not well organized public (open)spaces , so this disturbs one another. The other problem is the street public spaces are not designed intentionally but , created by users depending on the time and age group of the users.

According to the hot climate and low rainfall of wolkite city these spaces have big I mpact to forces people to provide their own spaces for shade and for social interaction, in case of Poor space management of current city, Lack of designed parks, public spaces and Gardens , the low critical consideration from the municipality about open spaces and their functions.

1.3. General Objective

The study mainly focuses on the purpose of public spaces in social life and housing system of the wolkite city. Their purposes are limited with the day to day activities of the people; with regard to the purposes they are giving they need upgrades in order to give the environment inflatable work station to the users.

1.3.1 Specific objective

- To identify contemporary street space character
- To identify value of street on character building &social capital buildings
- To identify the spatial organization of street public space
- To recommend possible alternative on street development as public space .

1.4. Research Questions

The research question address these questions

1. What are the elements of contemporary street character ?
2. What value are gained by street on character& social capital building ?
3. How is the spatial organization of public street space?
4. What the possible alternatives on street development as public space?

1.5. Significance of the Study

This research aims to study the significance of cohesive urban public spaces (squares) in social life through evaluating the relation between urban environment and social behavior from a human perspective. These issues are very important because of the hot climate of the city and most of the open spaces are used only for daily activities, so these open spaces can give big purpose in social, economic, environmental and cultural interaction between the communities. It is an important factor due to public participation to improve the quality of social life and also creation of a vibrant and dynamic city. A sustainable community needs social interaction, participation and social networks and contains a pride in sense of place

1.6. Scope and Limitation

. This thesis focuses on social issues, its effective factors and attitudes in order to plan and design public spaces (squares) in wolkite city . The research seeks to address social life based on people's environment role and their participation in places.

- To provide a place where all members of communities could gather together.
- To boost up unity and create a sense of brother hood.
- To provide a place for all-community celebrations at various occasions and traditions
- To Identify social awareness among the people.
- To Identify a place for physical well-being.
- To recommend design principle & criteria that can be applied to achieve accessibility

Chapter two

2.1 METHODOLOGY

❖ The research area is in wolkite city of specifically at the public space of wolkite. The research will be predominantly conducted by qualitative methodologies. Because the raised contextual issue needs understanding a social situation from participant's perspectives and exploring the unexplored in previous researches; therefore it needs interpretive approach to understand present phenomenon.

For this research it is intended to conduct through

2.2 Purpose of Data Collection

The purpose of data collection is mainly to understand the feelings and experience of the society on the urban public spaces and to base the solution based on the outcome of the analysis besides my personal exercise. And to find out the legal and institutional frame work, if any is available, which guide and administer the open spaces. The data collected were focused on the following key issues:

#the different activities carried on the public spaces

Safety and accessibility of the public spaces

landscaping elements and their need by the community

Society previous experience on public spaces

#what they fill about the public space (due to its presence in their neighborhood)

How the public spaces administered and developed?

2.3 Data collection methods

This research will use both primary and secondary data collection methods.

❖ Primary data source by the means of

☒ Interviewing the users of space at wolkite street.

☒ Critical observations on the site

☒ Reviewing available notes ☒ Taking pictures

❖ Secondary data source collection by the

☐ Website pages

☐ Senior student thesis

- Report (LDP & NDP report)
- Books and
- Others...

Table 1: Data Type in relation with Methods of Data Capturing

Methods	Data type	Description
Field observation	Spatial	To understand and describe the character of the newly built area in relation with urban sustainability indicators. To identify the gap between the plan and implementation of the project area.
	Non spatial	Descriptive information of the area.
Image interpretation	Spatial data	Identified the different land uses in the study area before and after the implementation of the project.

2.4 Data Analysis Technique

Many of the interviews were transcribed in full, and the review of all the literature was quite in-depth, the result was a profusion of documented information. Thus, the analysis is focused around the research objectives and in finding answers to the research questions.

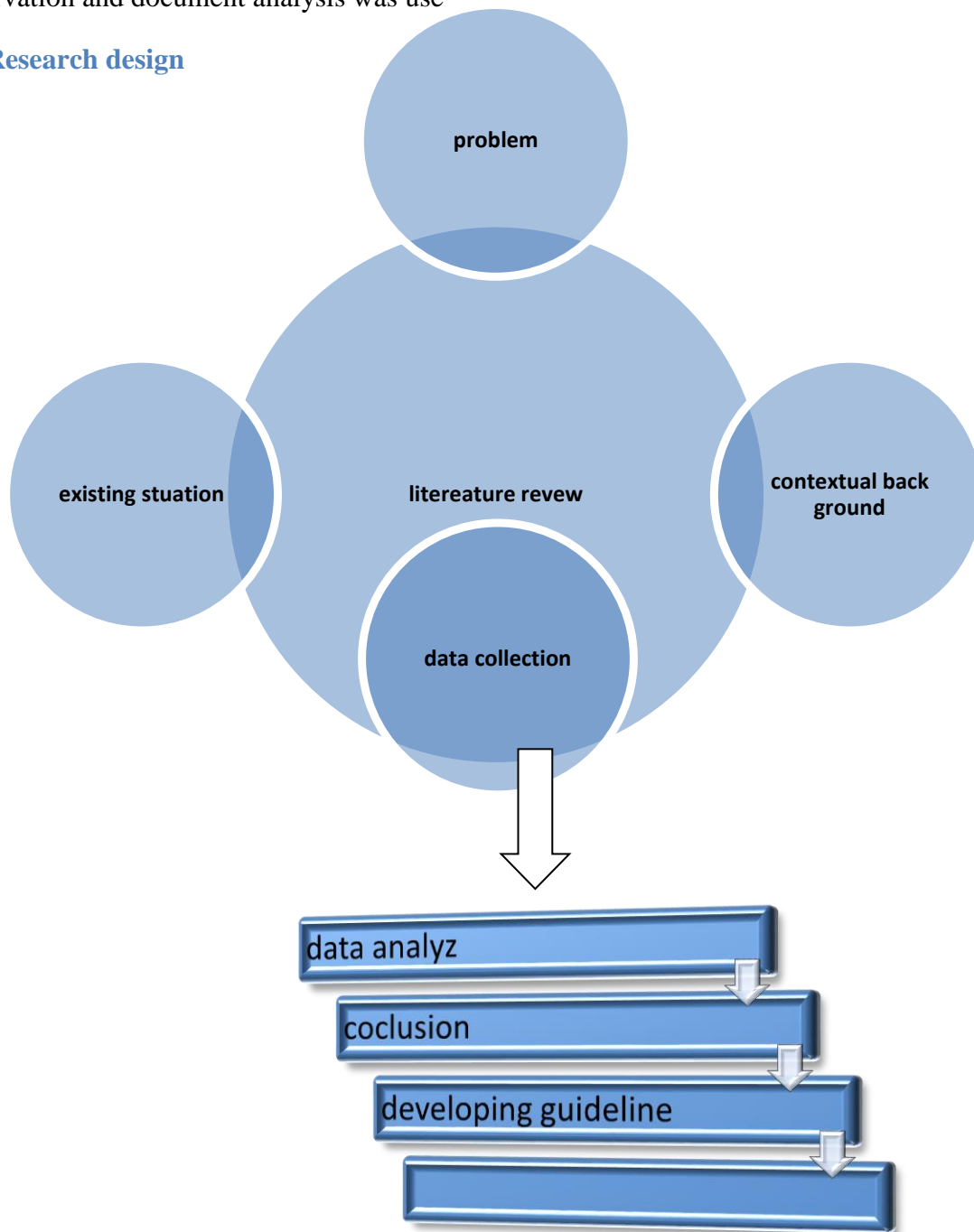
The first stage of data analysis involves sorting of all interview and observational data into themes that corresponded to the research objectives. The objectives were then refined to the themes and categories that emerged from the interview and observation. I also revisit the grey literature with a focused reading and review and extract the pertinent information that fit the research objectives. Throughout the review process, it was necessary to consistently return to the objectives so as not to become disengaged from them and to identify themes that were out of context. Steadily returning to and re-evaluating the central intention of the research and the resultant themes led to stronger and more focused objectives and analysis.

2.5 Research

Collection technique

Observation and document analysis was use

2.6 Research design



CHAPTER THREE

Literature Review

3.1 Introduction

One of the most important features of urban life today is complex social relationships. Part of the relationships is in the work environment, but much of them take place in the form of social interaction in the urban space concept. So, urban space plays an important role in the social development of citizens. Social interactions are formed in these places. A social zone is defined and also the mechanisms of collective life are experienced. Thus the absence of a suitable urban space can cause social ills in cities. Squares are one of the most important urban areas and have long been the context of formation of social life.

3.2 What is a Public Space?

In urban planning, public space has generally been characterized as “open space”, which means the streets, parks and amusement regions, squares and other freely possessed and oversaw outside spaces, in contrast with the private area of lodging and work (Tonnelat, 2010). Despite that, the late advancements of the types of urban settlement and the increasing number and assortment of semi-open spaces oversaw by private open or totally private organizations addresses this thought acquired from a legitimate point of view.

3.3 Understanding Public Spaces

Public spaces are assumed to be a key part in the urban structure and city life, turning into an advantaged component keeping in mind the end goal to advance regional attachment. It in this way that is conceivable to consider open space as a component ready to advance progression and requests from the region, additionally with a characteristic capacity to make and keep up coherent local centrality, ecological quality, financial intensity and feeling of citizenship (Borja and Muxi, 2003). Public spaces permit individuals to meet on apparently impartial ground in arranged and impromptu routes, to communicate with others inside of the entire society.

3.4 Public Space and Society

Public Space for Community Interaction

Public spaces are assumed to be a key part in the urban structure and city life, turning into an advantaged component keeping in mind the end goal to advance regional attachment. It in this way that is conceivable to consider open space as a component ready to advance progression and requests from the region, additionally with a characteristic capacity to make and keep up coherent local centrality, ecological quality, financial intensity and feeling of citizenship (Borja and Muxi, 2003). Public spaces permit individuals to meet on apparently impartial ground in arranged and impromptu routes, to communicate with others inside of the entire society.

Social

Open spaces provide places for people to meet and interact, thus increasing social cohesion and social inclusion. They provide opportunities for education and lifelong learning. Well designed spaces can promote a sense of place and be a source of community pride, helping to reduce crime and the fear of crime. They also provide opportunities for physical activity, helping to promote active and healthy lifestyles

Economic

. Open spaces bring measurable direct and flow on economic benefits to local, regional and national economies. These economic benefits enable communities to function and prosper, allowing them to build social cohesion, social capital and healthy communities. A recent review of literature summarized health and wellbeing outcomes of contact with nature, including benefits for economic wellbeing

These included:

- Parks and nature tourism are significant contributors to our regional (and national) economy
- Parks and associated tourism provide employment
- Urban greening attracts new businesses, consumers and tourists

Environmental

The contribution our green spaces make to our physical environment is immense. They maintain our clean air and water, enhance and protect biodiversity, cool our cities, store carbon, and protect the earth's outstanding natural features and processes. Our open and green spaces also provide air and water, enhance and protect biodiversity, cool our cities, store carbon, and protect the earth's outstanding natural features and processes. Our open and green spaces also provide protection from environmental hazards and can support resilience of communities to hazards.

Cultural

The importance to wellbeing of personal connections with nature is common to all cultures, and natural landscapes have traditionally been sources of inspiration for creative pursuits for all peoples throughout history. Urban spaces have a special cultural significance. Open spaces create opportunities for cultural interaction, bringing people of different cultures together to celebrate community diversity, or for communities to celebrate their own cultures.

3.5 Streets

“The street is not only a means of access but also an area for social expression” Smithson, A. and Smithson, P. *Urban Structuring*, Studio Vista, London, 1967, p.15

In modern cities streets have lost their innate value of being hosts of public life. Instead they are becoming channels of vehicular flow. In most celebrated cities are known for their superior quality of public realm. For the most part they are known for their streets, not for their latency of movement but for their successful marriage of mobility with rich public life.

This concept gets even for local and arterial streets. Streets are multi-functional spaces and there is always the risk of conflict between uses. The key is to design for all the uses and users. Street is also the basic element which remains in visitors as the image of a city. Kevin Lynch in his points on the image of a city, mentioned paths as a primary element. „Streets and their sidewalks, the main public places of a city, are its most vital organs. Think of a city and what comes to mind? Its streets. If a city’s streets look interesting, the city looks interesting; if they look dull, the city looks dull. Any public open space plan is to recognize the importance of streets as the framework of public open space. For a street to function as a place or exterior room in the city it must possess similar Qualities of enclosure as the public square. Therefore streets also share the primary needs that people seek to satisfy in public space Carr et al. (1992).

- Streets in our cities should be representative of our lifestyle and culture. Their designs need to respond to the multitude of activities and functions that streets perform. Modern streets also carry a number of infrastructure services such as water, sewer, storm water, electrical, and telephone lines. The design of underground utilities needs to be coordinated with the surface layout and functioning of a street.

Public realm: public street network, public transport interchanges, parks and other urban spaces. It includes ongoing management and programming of events on public space.

Informal commerce; consisting of units engaged in the production of goods or services with the primary objective of generating employment and incomes for the persons concerned. These units typically operate at a low level of organization, with little or no division between labor and capital factors of production, and on a small scale

3.5.1 Street Vending

- As the name implies the activity of street vendors is strongly attached to street and further divided into mobile/dynamic, those who visit different streets/ places during their working hours and immobile/static those that stay on -site, having a regular/home-base. Mobile street vendors is further divided into fully mobile, the ones that keep on moving, and partially mobile, the ones that have several rest/stop locations. An illustration of the latter is some sellers who sell in front of schools early in the morning (school children arrive, school about to start) and return there twice later in the morning and in the afternoon (school children having

recess and children released from school, school is over Between those times the sellers visit or relocate in other places where customers are plenty, such as markets, residential areas, office complex, etc. Static street vendors at the minimum have a piece of cloth or plastic mat thrown on the ground to display their wares (short-term markets), but usually they grow into some semi-permanent structure to accommodate their business. A common site is the “plastic blue tent” over (long) wood benches and/or plastic stools (Dynamic SV normally pushes carts or carries their wares on their shoulders.

3.5.1 Challenges of street vending

- Pedestrians are annoyed by their encroachment of sidewalks. At some places it is difficult to walk straight. People then will have to pass the narrow aisles between seller stalls walking sideways. When the Sidewalks are too crowded people are forced to step onto the road to Walk, which is a very dangerous exercise. Drivers and other road users Dislike them for their road encroachment.

3.6 TYPES OF SOCIALIZATION SPACES

3.6.1 PARKS

Parks and open space refers to land that has been reserved for the purpose of formal and informal sport and recreation, preservation of natural environments, provision of green space and/or urban storm water management. The web dictionary defines a park as a piece of open land for recreational use in urban areas (Google, 2019). Under the premise of most local councils a park is generally divided into two main types, a local park and a neighborhood park.

- **A LOCAL PARK** is generally larger in size and has a wider range of facilities compared to a neighborhood park,

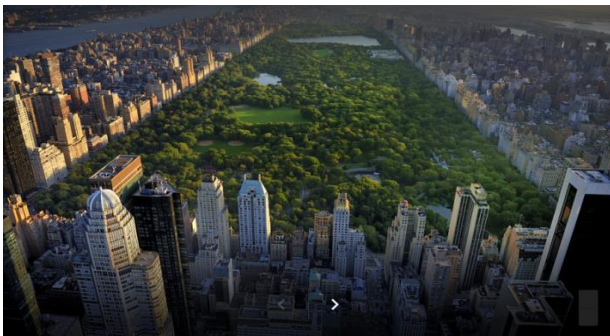


fig 2.7 central park new York



fig 2.8 wonsel-west local park

- **A NEIGHBORHOOD PARK** is generally smaller in size and has a limited range of facilities and will probably service residents within close walking distance.



fig 2 small neighborhood park



fig 2.10 neighborhood park around high rise residence

3. 6.2 PUBLIC OPEN SPACES

An open space network should encourage more active lifestyles by offering a variety of safe and attractive spaces that are well distributed throughout a neighborhood and are accessible and cater to the sporting and recreational needs of the community .Preferably public open space should attempt to cater for multiple users. For example, through landscaping and the addition of facilities, a sporting oval could be designed to cater for sportspeople, walkers, and children. One study found that people who use public open spaces are three times more likely to achieve recommended levels of physical activity than those who do not use the spaces. Users and potential users prefer nearby attractive, and larger parks and open spaces

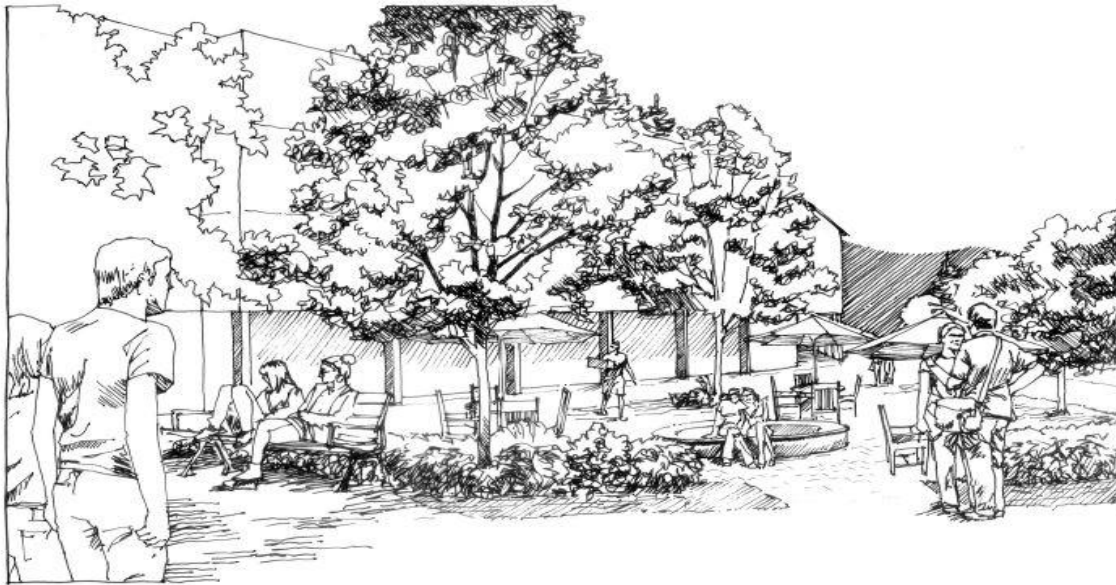


fig 2.11 Conceptual Sketch of Public Space at the neighborhood

NEIGHBORHOOD open spaces provide for regular local use and may include: small areas of open space that are accessible to local residents, generally providing for

.Recreation such as children’s play and relaxation, which also can provide an identity and a sense of place for a community especially where it incorporates an important landscape feature or historic characteristic.

- Playing fields for organized sport in size which can also be used for Walking and Informal activities, and
- linear parks linking areas of open space.

DISTRICT AND REGIONAL open spaces are larger and cater to the needs of a

The types of open spaces may include:

- district playing fields that provide for a range of active, organized sport and recreation such as football/soccer fields, cricket pitches, tennis courts, baseball fields
- waterfront and other regional parks for social gatherings, such as picnics, recreation and education, and
- areas reserved for cultural or environmental retention (escarpments and areas of biodiversity value such as wetlands and bush land) that may provide some limited recreation opportunities, such as bird watching, picnicking and bushwalking.

3.6.3PLAYGROUNDS

The playground is a relatively outdoor building type with a distinctly urban character. Since its beginning, the playground has been among the most important space for children outside their home. Primarily based on the findings from Susan G. Solomon the historic development of playgrounds could be generally divided into four phases:

1) EMERGING PHASE (about 1820s – 1940s): While the first formal playgrounds were introduced in 1821 in the United States, they were typically limited to provide “indoor gymnasium equipment modified for outdoor use”, and mainly worked for older children (Hestenes 2009). It was until the 1880s that the first freestanding purpose built playgrounds were built in the United States, to retain the control of children's social play. Several policies were designed to protect children in the labor force and to support schools, playgrounds, and kindergartens during this period. In 1900s, major American cities had playgrounds with sand pits and the "gymnasium"(an early climbing apparatus); however, “gymnasiums” were removed from all of parks in New York City for safety concerns in 1912

3.7 PLAYGROUND, ACTIVITY SPACES AND ELEMENTS

According to time savior standard for building types A playground should contain the following basic activity spaces and elements:

1. A play lot, as described in the preceding section, with equipment and surfacing as recommended.
2. An enclosed playground equipment area with supplemental planting for elementary school children and with equipment as recommended.
3. An open, area for informal active games for elementary school children.
4. Shaded areas for quiet activities such as reading, storytelling, quiet games, handicrafts, picnicking and horseshoe pitching for both children and adults

CHAPTER FOUR

Case Study

Local case

4.1 Meskel Square at Addis Ababa

Addis Ababa is found in the central part of Ethiopia at an elevation of 2440m above sea level. (Encarta 2008) and its total size is estimated to be around 520km². The history of urban open spaces in Addis Ababa would begin from the recent past. The historical aspect of the city is described in the city development plan (ORAAMP, 2009), Addis Ababa means “new flower” according to the native language Amharic. This name was given to it when it was first founded by Empress Taitu, wife of Minilik II, in 1886. Before this, the name of the area was called Finfinne and it was known for its fertile farm land and dense forests with streams and a sloping terrain.

This area has been chosen because of its unique characters listed below.

- It is the first urban open space to be designed for the purpose
- It is the only place recognized by the city administration as Plaza.
- It is found in the center of the city and is easily accessible from any part of the city.
- It is the largest amphitheatre in the city.
- It is considered as the only open gathering place when
the city hosts international events.

The square is bordered by a 50m wide vehicle street on the northern side, two museums on the eastern side, and an exhibition centre on its southern side and a high school on its south western side. This place has a total area of 47790 m². It has a total height of 6.7 meters from its northern to southern edge. The municipality is currently planning to build three more such spaces in three other parts of the city.

4.2. Development of the square

The site of the current location of the square was given to Ras Biru, a royal person related to emperor Minilik II when the city was founded. As every other royal person, Ras Biru also lived at a higher level near this location. (Giorghis and Gerard, 2007) The place was owned by him. Thus, even at that time, the landscape had a potential to be changed into the current shape of the square, a square with the shape of an amphitheatre. The base for the foundation of the square was the construction of the Estifanos Church in 1958. This church was built by Emperor Haileselesie. The previous church which was used by the Emperor was the St. George church.

4.3 Meskel Square Today

Today, the square is used by the inhabitants of the city throughout the year for different purposes. As the main objective of this study, I tried to study the main functions of this space. The different functions could be categorized in toreligious, political, cultural and day to day activity. The first function which is the religious function purpose of the religious ceremony of “Meskel” festival and it got its name from the festival, the “Meskel” festival is one of the main highlights of the square every year on September 27th

4.4 Day to day functions of the Square

People use the square for different purposes. In order to understand the use and function of the square, I interviewed the users randomly categorized into three functions. The first function is the sport activity on the space. The second function is the recreational purpose of the square. The third function is trade.

4.4.1 Sport activity(function

Many people come here for exercises. There are those who exercise as part of professional training and there are those who exercise for recreational and health reasons. The age group ranges from 10 to 50. The types of exercises differ accordingly . The ones who practice running use the upper part of the square which is the set of steps.

The reasons they choose this place for trading are

- Not much shops around the square. So, many people buy goods from them.
- The place is relatively free from legal authorities than other places.
- The square is easily accessible

The problem they are facing is the fact that they are not allowed to work here. Since they are very small in scale, they are not registered as tax payers. Most of them cannot fulfil the criteria to be legal. Another inconvenience for the small scale business owners is the harsh sun. They have to wait for customers the whole day. The unemployed people on the square also cause security problems for these users.

4.5 Recommendation for Meskel Square

The management of the square is not given much attention. The square is not cleaned properly; homeless people are not taken care of, elements of the square like the steps and light fixtures are not maintained well and there is no improvement on the square since the beginning. Since the square was designed only for the purpose of an amphitheatre, it cannot allow many activities to take place harmoniously. There are illegal trades, car parking takes up space from the soccer players, bicycle riders are dangers for other users, runners want an open field with no one sitting on their track fields and many more other problems discussed in previous chapters are found on the square. Keeping the positive qualities of the square, I suggest the following approaches to solve the existing problems.

International case

4.6 CASTLEMILK

Castle milk has long been known as a major area of Council housing, and very little else, on the southern periphery of Glasgow which suffers from severe social and economic deprivation. What is much less well known is that it was built on the site of a historic designed landscape which had been developed over several centuries around the fifteenth century Casselton tower house. This was taken over in the seventeenth century by the Stewart family, which moved from the Water of Milk a few miles from Dumfries – hence Castle milk



At one time during the seventies, Castle milk housed a population of approximately 45,000 people in an area of around two square miles, with the housing blocks located in such a way as to avoid building in the wooded valley running through the estate. Vandalism, illicit drinkers, fly-tipping, burnt-out cars, storm damage and neglect -and a high profile murder – subsequently led to most of the local community turning its back on the landscape. Perhaps because of this, large numbers of trees survived, although rhododendron bushes and other invasive species largely took over at ground level. Progressively, the original designed landscape disappeared from view. Over the past decade or so, the Castle milk Partnership has sought to tackle the area’s most urgent problems. Starting from an assumption that the key need was to renovate the existing fifties housing, it quickly concluded that demolition and redevelopment were a much better option which also created the opportunity to change the whole nature of the area. The main emphasis in the past decade has been on attracting community-based housing associations and private developers in order to enhance the quality of housing in the area. A critical element in achieving this objective has been to upgrade the local environment. The need for this was recognized by the former Strathclyde Regional Council, Glasgow District Council, Scottish Homes and the Glasgow Development Agency and they commissioned an Environmental Action Plan in

1993-4. Subsequently, the Castle milk Partnership, Glasgow City Council and Scottish Homes formed the Castle milk Environment Trust to implement this plan, initially seen as requiring expenditure of around £660,000 on approximately twenty sites over a three year period.



Figure 3 the landscape around the loch and new private housing

CHAPTER FIVE

Contextual Background

5.1 Historical Development of Wolkite City.

Wolkite Gubre town is located 155 K.m southwest of Addis Ababa, on the main road to Jima. During the reign of emperor H/Selassie it had been an administrative centre of Goro Woreda. Towards the end of the Derg regime it became a centre of both the Cheha Awraja and Goro Woreda. Since the assumption of power by the EPRDF government it has become an administrative centre of the Guraghe Zone within the SNNPRS.

Topography

The relief of the town is characterized by hills, plains gorges and steep slopes Wolkite Gubre town is situated on from sloppy to plain topography. The average elevation of the town ranges from 1710 to 1950 meters above sea level

The altitude of the town increases as one move from north (Wolkite area) to the south east (Gubre area). Similarly the height increases as one move from south to north of the town The highest point of the town is found in north (Wolkite area). On the other hand, the lowest point is found in the south part following Wabe river.

Climate

Traditionally, the climate of Wolkite Gubre town is classified in to Woina Dega type. In the next sessions rainfall, temperature and wind direction of the town is discussed in detail

Rainfall

There are two station with in the study town. These are Wolkite and Gubre stations. Wolkite station records both rainfall and temperature data where as Gubre station only records rainfall data. According to a 10 years climatic data calculation, the total rainfall of Wolkite station is 1,138 mm. Similarly , the total rainfall of Gubre station is 1,294 mm. This implies as one moves from Wolkite(north west) to Gubre(south east) rainfall increases

wind direction

The meteorological stations of both Wolkite &Gubre areas don,t record the climatic elements such as sunshine, wind velocity and wind direction etc. As a result it is hard to get accurate data on the stated climatic elements. However, to fill the gap the writer consulted the residents of the Wolkite & Gubre areas. According to the informants, the prevailing wind over both areas are summarized as follows

5.1.1 Foundation of the town

As the influx of settlers increased religious service became a necessity. By then there was no church at what is today Wolkite or around it. Thus for funeral and other services, the settlers at Ghibe and Wolkite used to travel to the church of St. Michale, at Gora sodo Crossing today's Gubre or Used Qidus Giyorgis Church at today's Gubre , which is located some 20 kms north of Wolkite. Traveling this distance was a tedious job and it was for this reason that fitawrari Habte Giorgis established a church at what is today Wolkite. The Fitawrari brought the covenant of St. Mary in about 1890. This was the genesis of the foundation of the Town of Wolkite.

5.1.2 Naming of the town

According to elders Aba Jiffar is said to have coined the name Wolkite to the town. Aba Jifar used to travel from Jima to Addis Ababa to had contact with the then King of the country Minilik the II, during their long journey they used to get rest and even spent nights at what is today Wolkite particularly at a site named Gemel Warka.

5.1.3 Current Public Space in wolkite

Today, Wolkite has not yet met the standards which give it the image of an zonal city. The quality of urban life is not being considered in many aspects. The urban planning and design aspect has not yet given the needed priority to urban open space, this is due to land for this purpose were not reserved in the old plan of the town .Other recreational facilities including neighborhood level playing grounds are also not available. Beside this no public parks except the Raze Park in a very limited compound which now days serve as youth development center and Alpha park with a similar compound with that of raze park . Thus, the town needs to have public parks and Historical and cultural halls at an appropriate locations.

5.1.4 Existed Green and Open Space in wolkite city.

This framework is amplified by public open spaces, parks, playing fields and greens that provide dignified settings for the neighborhood. This interconnected network of public open space establishes the character and scale of the neighborhood. Currently, there is a little open or recreation space within the planning area. Therefore, the Plan recommends improving the existing Addis Ababa – Jimmy Highway, by scaling down the carriageway to 12m and uses the remaining space for green alleys for all type of users, including shopping, breathing, socializing, biking and working. The plan also creates possible locations for pocket parks in areas where there will be volume of pedestrian traffic. The alleys and green networks are harmonized with community spaces and improved by using furniture. The plans illustrate more details.

5.1.5 Commercial Activity of the town

Commercial activity is a base for Socio Economic development of towns under consideration. It is also one of the major factors to be considered while the process of urban plan takes place. There are different commercial activities which take place in both Wolkite and Gubre town before they formed as one town, although, the commercial activity Gubre town is inactive relatively to Wolkite as it is a newly emerging town.

In addition to these as the data collected revealed, so many agricultural industrial and products, especially cereal crops, cash crops, wood and wood products, fruits and vegetables, live animals, industrial products which increase economic linkage of the town. are supplied to the town from different coroners and out going to other towns of Guraghe Zone and other rural areas(especially, Industrial products). The main types of commercial activities are presented as follows.

Types Commercial Activity in Wolkite Gubre Town

The main Commercial activity types which are found in Wolkite town includ

- Service Rendering Establishments
- Retail Trade
- Whole sale Trade
- Small scale and Manufacturing's
- Informal Trade

-

CHAPTER SIX

RECOMMENDATION AND CONCLUSION

6.1 Recommendations

The use of the square by different users for different activities has also caused a problem in space usage. There are illegal trades, car parking takes up space from the soccer players, bicycle riders are dangers for other users, mobile marketers and shoeshines and many more other problems discussed in previous chapters are found on the street. Keeping the positive qualities of the square, I suggest the following approaches to solve the existing problems.

New urban public spaces should be designed in the city with many functions included.

- Provide space with Furniture's, shaded and best recreational areas to accommodate users.
- Design ideas that would incorporate environmental as well as cultural values together.
- In order to increase the social, economic, environmental and cultural activity with the Multi functional open space the administration needs to put some effort

1. WhenI was qualifying the open space, they need attention on developing a mechanism to reduce the problems and introducing for a better multi-functional open space design.

3. Due to different cultural factor that already studied, when we design the open spaces we have to keep the historical, cultural, social identity of the open space should be taken in mind.

4. Provide sufficient and high quality facilities in the public space, e.g. children play ground, public library, exercise facilities, universal accessibilities facilities, etc., placement of facilities is also an important to pay attention to. In areas that people will stay, e.g. sitting areas, gathering plaza, fitness equipment areas, they should not be located closed to unfavorable facilities, e.g. garbage processing stations, smoking areas, etc., as the smell, noise, pollutants will affect the users and decrease their willingness to use those facilities.

5. To create a social linkage among the user there should be facilities and services like shopping area on street , concerts area, cultural area ,seating area etc.

6.2 CONCLUSION

The issue of urban public space in urban planning and design is a contemporary issue. Urban public spaces are very important elements in a city. Their benefits have many dimensions:

economic, social, political and many more. Creating public spaces in urban environments is considered a fundamental aspect of fulfilling environmental quality goals and attaining a livable city. Wolkite which is an important town in the continent needs to have proper urban public spaces which enhance the quality of its city life. It needs places that enhancement its aesthetics. We need a public space designed for the culture and context of Wolkite itself. To achieve this, the first step should be the understanding of the trend of public space usage in Wolkite. The objective of this paper is enhance the image of Wolkite town by proper planning and design the urban public spaces and streetplan mainly left over spaces for Wolkite community and improve the attractiveness and quality of the urban environment and To study and document the existing condition of the urban public space in the Wolkite both qualitatively and quantitatively and come out with workable solutions for implementation.

From the analysed and collected data the study finally concludes that the quality of the open space needs a lot of improvements according to multi-functionality and better mechanisms which bring the space in to a better place for the residents of wolkite city . Keeping the cultural context of the space must be one of the studies. Hence, every social, economic, environmental and cultural activities will be considered in the proposal design

CHAPTER SEVEN

7.1 DESIGN PROPOSAL

To upgrade the open spaces, street quality and to benefit from them the design method should be clear and programmed according to the analysis. open space street upgrading system should be applicable for the selected area and also for other street areas of wolkite city by considering the characteristics of the site and other essential things for the community. In order to integrate the site and the community with different kinds of functions that can adopt the environment all points mentioned above are important.

Design Guide line

- Providing both natural artificial shades
- Providing available materials
- Designed gardens by keeping the existing vegetation cover
- Friendly design with the activities that took place through the spaces.

Vision

Creating a green chain multi-functional open space for a healthy growth of social, physical and mental attributes that is durable and adaptable for both public space and private spaces.

Goals & Design Ideology

- ❖ Provide a space in household (front yard, courtyard) for events and daily work and Enjoyment
- ❖ Provide green frame Provide public health through natural connection of people and green frame
- ❖ Provide Multi-functional spaces that are:
 - o Interchanging spaces adaptable to desired function
 - o Easy to configure
 - o Adaptable to any shape of space
 - o Considering the existing structures
- ❖ Provide public open space that are:

- For daily, monthly ,yearly events
 - For All age groups
 - Culturally integrated
 - Contextual, economical and durable
- ❖ Providing comfortable street corridors.
 - ❖ Providing opportunities for job creation like:
 - Gardening
 - Cleaning
 - Shoe shine
 - Shops
 - Coffee shops

Action plan

- ❖ **Public open space**

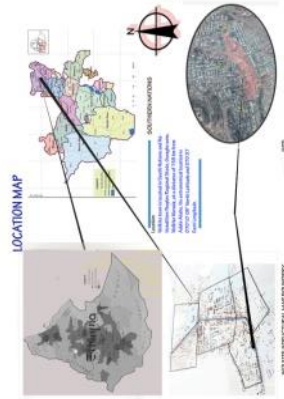
Open space for observation

- Visual appeal
- Spatial simplicity
- Contextual integration of material
- Natural shades and man-made shades
- Timeless architecture - Green belt



CONTEMPORARY STREET AS PUBLIC SPACE

SITE ANALYSIS



CLIMATE

The area of site is 3200m. It is also rectangular shape. Its altitude is 1710-1800m above sea level. Major dominant soil is black cotton. In addition of these mean annual temperature is 19°C, 21°C mean annual rainfall is 1200mm and the prevailing wind direction is from west to east. The primary natural constraints for the planning of the site are the steep slope and the deep gully. Other constraints are illegal settlement.

HUMAN AND CULTURE

On the site, the majority of population is engaged on trade activity, they have culture of hard working and give equal value for all professions. The soil type black cotton is not good for construction purpose because the ring capacity of soil is not greater than G+3 generally. In my opinion the site topography is good.

TOPOGRAPHY

In the site surrounding there is no microclimate. The site is located on the edge of a hillside. In good advantage to creating landscape design also soil type black cotton is not good for construction purpose because the ring capacity of soil is not greater than G+3 generally. In my opinion the site topography is good.

Road, Transport and Accessibility

Road
The site is located on a main road which is the base of the town's infrastructure. This road is the road which means it has no many commercial use on display. The road is one sided which means it has no separation between the coming and going car. This affected the traffic light system.

Transport
For transport they mostly use 3 wheeled vehicles (Bajaj). As the town is a small town there is not enough space for occupation of this heavy loaded vehicle. So there are many vehicles out on the road which disturb the movement of the people. As the town is a small town there is not enough space for occupation of this heavy loaded vehicle. So there are many vehicles out on the road which disturb the movement of the people. As the town is a small town there is not enough space for occupation of this heavy loaded vehicle. So there are many vehicles out on the road which disturb the movement of the people.

History of wolkite site

During the Italian occupation, Wolkite was the center of Italian administration. The old buildings of the town were built by the Italian. The first construction of Wolkite was begun after the occupation of Italian. Addis Ababa and Jimma main roads were constructed through Wolkite for the Italian. The town was named on different basis: such as historical, religious, and social. The town was named on different basis: such as historical, religious, and social. The town was named on different basis: such as historical, religious, and social.

FOOTBALL

Activity conducted in the site includes the football field. The site is located on the edge of a hillside. In good advantage to creating landscape design also soil type black cotton is not good for construction purpose because the ring capacity of soil is not greater than G+3 generally. In my opinion the site topography is good.

WALK

On the site, the majority of population is engaged on trade activity, they have culture of hard working and give equal value for all professions. The soil type black cotton is not good for construction purpose because the ring capacity of soil is not greater than G+3 generally. In my opinion the site topography is good.

Play

On the site, the majority of population is engaged on trade activity, they have culture of hard working and give equal value for all professions. The soil type black cotton is not good for construction purpose because the ring capacity of soil is not greater than G+3 generally. In my opinion the site topography is good.

SITE ACTIVITIES



Land Use



Location and Integration Map



Existing Land Use Map



Location and Integration Map



Existing Land Use Map



BY: Befikadu Tsengaye
I.D. 124/06

ADVISOR: - Tadele Ayele

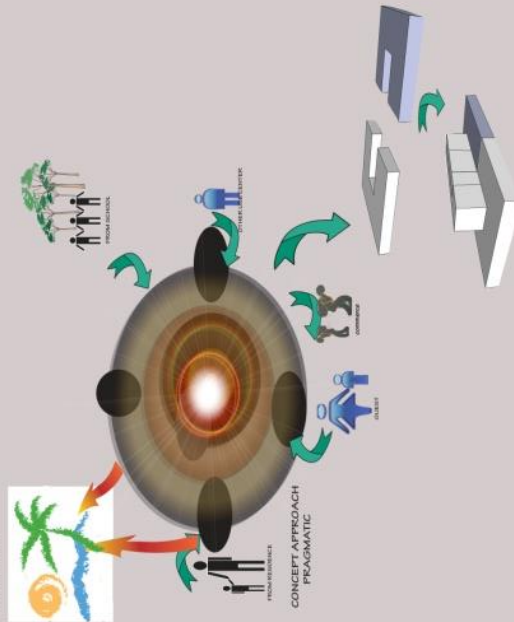
Bachelor degree thesis project

CONTEMPORARY STREET AS PUBLIC SPACE



CONCEPT SHARING SPACE

THE CONCEPT IDEA IS TAKEN FROM SHARING OF HUMAN ACTIVITY WITH ENV NATURE WHICH MEANS HUMAN ACTIVITY LIKE CULTURE, ECONOMIC, WAYS OF LIFE AND OTHER ACTIVITY THE OTHER ONE IS NATURE THESE SPACE LIKE GREEN AREA, OPEN SPACE, GREEN CORRIDOR, WATER BODYS, AND OTHER NATURAL FEATURE THOSE THING FINAL SHOW INTEGRATION OF HUMAN ACTIVITY AND NATURAL ACTIVITY WITHIN SPACE WHICH SPACE CHARACTERIZED BY PEDESTRIAN ACTIVITY WITHIN MARK, OPEN SPACE, CULTURAL AREA, COMMERCE AREA, WAITING AREA ETC

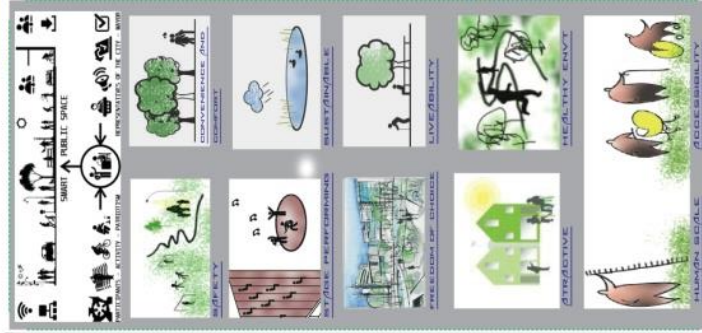


conceptual design

Individuals and groups within public space are not of equal interest and understanding. A number of social, economic, and cultural considerations, such as the amount of time available to visit, the level of interest, the level of participation, and the level of awareness, all influence the level of interest in public space. The level of interest is also influenced by the level of awareness, which is influenced by the level of information.

public space

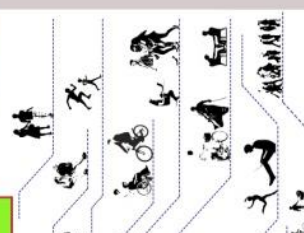
- Quality public space is most of all livable, i.e. safe, accommodating to all groups of people, healthy, lively, communicative, stimulating and beautiful.
- Designing public space for all human groups are the bases for public space.
- Public space should not only be accessible, but also attractive for all groups of people.
- Appropriate lighting and cleaning are essential to quality public space.
- Public space in a city should encourage pedestrians to move about and spend time in it. Livability of public space is an important factor in the social and cultural infrastructure should concern to it.
- Quality public space should allow for the widest array of leisure-time activities and encourage social contact.
- Identification with the environment reinforces social cohesion. Anonymous places lacking in character elicit feelings of alienation and are not sought-out.
- The spaces created by public space should be designed to encourage daily programs, weekly cycles and the seasons.



users profile



program diagram



By: Bef ikadutsegaye
Id: 124/06

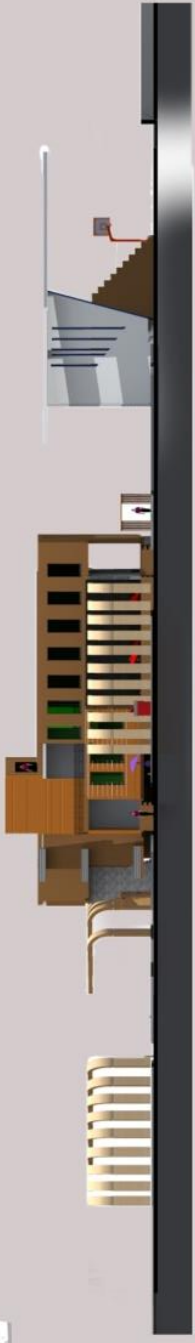
ADVISOR: - Iadele Ayele

Bachelor degree thesis project



CONTEMPORARY STREET AS PUBLIC SPACE

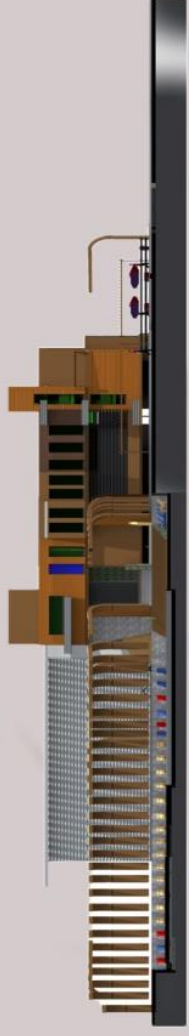
ELEVATIONS



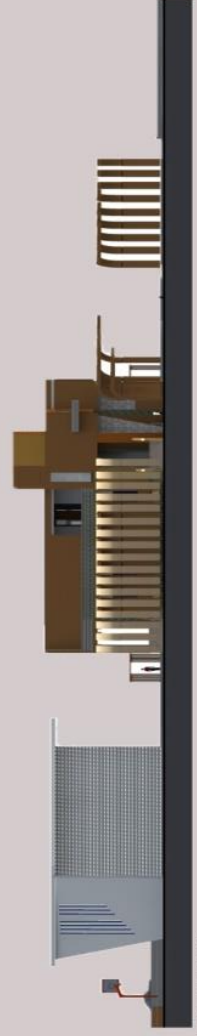
FRONT ELEVATION



RIGHT ELEVATION



LEFT ELEVATION



REAR ELEVATION

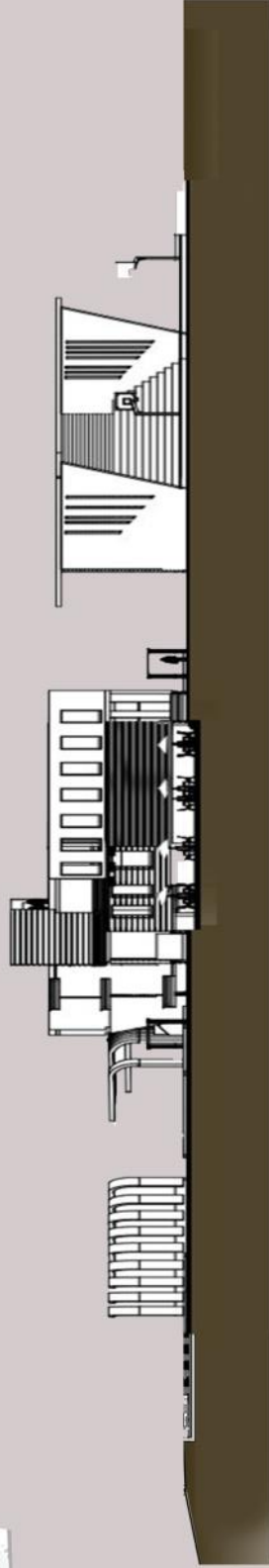
BY: Befikadu Tsegaye
Id. 124/06

Bachelor degree Thesis project
ADVISOR: – Tadele Ayele

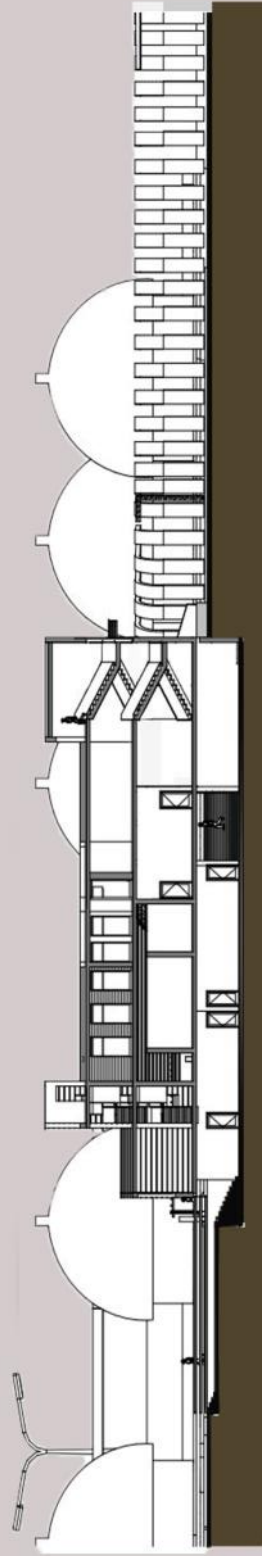


CONTEMPORARY STREET AS PUBLIC SPACE

SECTIONS



SECTION Y-Y



SECTION X-X

BY: Befikadu Tsegaye
Id. 124/06

Bachelor degree thesis project
ADVISOR: - Tadele Ayele

REFERENCES

Public_Open_Space_Strategy_Volume_1_and_2_adopted_20_May_2013

410-Open-Space-Resource-Guide-Full-Version-WEB

Regional public health, better health for the greater wellington region

Greater Wellington Regional Council – Terms of Reference for the Wellington Regional Strategy “Open Spaces Working Group”,

Auckland Regional Growth Forum. 2005. Auckland Regional Open Space Strategy.

Ministry for the Environment. 2005. The New Zealand Urban Design Protocol. Note that these design functions are three that are most relevant to this discussion, from a list of nine