



WOLKITE UNIVERSITY

COLLEGE OF AGRICULTURE AND NATURAL RESOURCES

DEPARTMENT OF WILDLIFE AND ECOTOURISM MANAGEMENT

**Attitudes and Perception of local Communities toward Wildlife Conservation
in and around Ambicho Natural Forest, Limo District, Hadiya Zone, Central
Ethiopia**

Senior Research Project (Course code: WETM 3164) Submitted to Department of Wildlife and Ecotourism Management, College of Agriculture and Natural Resource, Wolkite University for the Partial Fulfillment of the Completion of BSc Degree in Wildlife and Ecotourism Management.

By: Daniel Demisse ID No. AGR/096/09

Advisor Name: Abera H. (MSc)

May 23/2019 /

WOLKITE, ETHIOPIA

DECLARATION

I hereby declare that this senior research project entitled “Attitudes and perception of local community toward wildlife conservation in and around Ambicho natural forest, limo district, Hadiya zone, Central Ethiopia. Submitted to the department of Wildlife and Ecotourism management; Wolkite university, collage of agriculture and natural resources, in partial fulfillment of the requirements for the BSc degree in Wildlife and Ecotourism management, is a recorded of original work done by me under the supervision of Mr. Abera Hailu.

Name _____

Place _____

Date of submission _____

Signature _____

ACKNOWLEDGMENT

First of all I would like to thank my God for his endless support in all aspects of my life; secondly I would like to thank my Advisor Mr. Abera Hailu for his Continuous advice and for his other technical support. Thirdly I would like to thank Ambicho natural forests scouts, limo district tourism office and local communities of Ambicho natural forests for their good support during data collection. Than I would like to thank my family for their excellent financial support and for their best idea support. Finally I would like to thank all my friends for their moral support.

ACRONYMS AND ABBREVIATIONS

SNNPR	South Nation Nationalities of Peoples Region
HWC	Human – Wildlife Conflict
FGD	Focus Group Discussion
IUCN	International Union for Conservation of Nature
HHS	Household Survey
ANF	Ambicho Natural Forest
PA	Protected Area
CBE	Community Based Ecotourism

Table of Contents

DECLARATION.....	ii
ACKNOWLEDGMENT.....	iii
ABBREVIATIONS AND ACRONYMS.....	iv
LIST OF TABELES.....	vii
LIST OF FIGERES.....	viii
Abstract.....	ix
1. INTRODUCTION.....	1
1.1. Background.....	1
1.2 Statement of the problem.....	3
1.2.1. Significance of the study.....	3
1.3. Objectives.....	4
1.3.1. General Objective.....	4
1.3.2. Specific Objectives.....	4
1.4 Research questions.....	4
1.4.1. Justification of the study.....	5
1.4.2. Limitation of the Study.....	5
2. LITERATURE REVIEW.....	6
2.1 WILDLIFE CONSERVATION IN ETHIOPIA.....	6
2.2 Importance of wildlife conservation.....	6
2.3. Factors that Influencing the Attitudes and Perceptions of Local People.....	7
Toward Wildlife Conservation.....	7
2.3.1. Socio-Economic Factors.....	7
2.3.2. Human-Wildlife Conflict and Their Implications on Attitudes and Perceptions.....	7
Of Local community.....	7

2.4. Forest for Wildlife.....	8
3. MATERIALS AND METHODS.....	9
3.1. Description of the Study Area.....	9
3.2. Data Collection Methods and Sampling Technique.....	9
3.3. Focus Group Discussion.....	10
3.4. Data analysis.....	11
4 RESULTS AND DISSCUTION.....	12
4.1. DEMOGRAPHIC CHARACTERISTICS OF.....	12
THE RESPONDENTS.....	12
4.1.1. SOCIO ECONOMIC (LIVEL HOOD) SOURCE OF THE RESPONDENTS.....	14
4.2 Attitudes and Perceptions of Local Communities Toward Wildlife in the Study Area.....	2
4.3. Factor that Influence the Attitudes and Perception of Local Community.....	2
Toward Wildlife Conservation.....	2
4.4 Attitudes of Local Communities toward the Existence Value of ANF.....	5
4.5. Local people’s participation in wildlife conservation.....	5
4.6. Major Crop Raiding Wild Animals and Livestock Predation Found In the Study Area.....	6
DISCUSSION.....	7
CONCLUSION.....	9
RECOMMENDATIONS.....	10
REFERENCES.....	11
APPENDIX.....	16

LIST OF TABELES

Table 1: demographic characteristic of respondents in the study area

Table 2: The Attitudes of the Local Community Toward Wildlife

Table 3: Reason for Local Communities Having Positive Attitude Toward
Wildlife Conservation.

Table 4: Reasons for Local Communities Having Negative Attitudes Toward Wildlife.

Table 5: Wild Animal Crop Raiders Ranked by Respondents

LIST OF FIGERES

Figure 1: Duration of the respondents settled in the place of residence

Figure 2: The economic source of the respondents

Abstract

Ethiopia is one of the biodiversity countries in the world that it deserves the attention regionally and globally. ANF is the remaining natural forest in Ethiopia which supports many wildlife including large mammals and birds Species surrounded by many local communities. The objective of this study was to access the attitude and perception of local communities towards the wildlife conservation questioner house hold survey and focus group discussion was used to analysis the local communities' attitude. 40 respondents were selected from the total household (160) in the study area in order to collect accurate data from the respondents. 75% of local communities have negative attitude towards wildlife species in the study areas due to crop raiding (33.33%), lack of insurance (6.7%), disease transmission (20%), lack of knowledge for local communities about the value of wildlife (10%), destruction of domestic animals (23.3%) and lack of strong governmental rule for wildlife conservation (3.3%) and having negative attitude on wildlife without any affection (3.3%) At the same time 20% of the local communities have positive attitudes toward wildlife that is why wildlife in the forest has their own values and benefits such as generate income from the tourist (25%), ecological value (25%), collection of wood from the habitat of wildlife (12.5), creat job opportunity (12.5%) and construction of house (25%).

Key words:-Attitudes, perception, wildlife conservation and crop raiding.

1. INTRODUCTION

1.1. Background

A Protected Area (PA) can be defined as “a clearly defined geographical space, recognized, dedicated and managed, through legal or other effective means, to achieve the long term conservation of nature with associated ecosystem services and cultural values” (IUCN, 2008). Protected areas are managed for different reason, such as protection of species and ecosystems; safeguarding of landscapes, scenic and historic features; tourism and recreation; education, science or research; protection of watersheds and important reserves of timber, fisheries and other biological resources; and increasingly for the sustainable use of natural resources by local people (Tedla, 2005).

CBET is a form of ecotourism which is socially sustainable activity that encourages community participation, owned and operated mainly by local community members (Hatton, 2005). According to The International Ecotourism Society (IES, 2006) CBET is “a form of ecotourism where the local community has substantial control over, and involvement on its development and management, and a major proportion of the benefits remain within the community. The CBET is focused on sustainable activity of both cultural and natural heritages (Hatton, 2005).

Attitude and perception of local community towards wildlife conservation is one of an important thing in conversation of wildlife in everywhere protected area. Attitudes are positive or negative response of people toward wildlife conservation (Eagly, 2008). An attitude is an evaluation of an attitude object, ranging from extremely negative to extremely positive. And perception is the quality, state, or capability being affected by some external and sensuality or away of conceiving something (Wood and Fazio 2000). Wildlife conservation is the practice and art of managing wild animal resources associated with the given area (Infield, 2004).

But up to now most of the local peoples have negative attitude towards the wildlife even if they use wildlife and wildlife products for different purpose through rule and regulation and some of the peoples have positive attitudes toward wildlife (Jackson, Wangchun and Dadulg, 2003). So that now a day the term wildlife is changed to yedur hiwot which means any terrestrial and aquatic living species found in natural but not domesticated animals and cultivated plants,

move on land, fly on air and live in water which also encompasses their habitat and breeding area, and it is any expression on diverse biological resources (Allendorf, 2007). Ethiopia is one of the richest countries in the diversity and population of wild animals (Readen and Wilson, 2007). The high level of wild animals in Ethiopia the large extent to temperature is attributed to highland and the variation of temperature rainfall among different habitats (Yalden, 2003). The forest resources in Ethiopia have been continuously declining over time that means they have declined significantly and steady both in size and quality that is why b/c of human benefit are reliant on forest for regulating and supporting cultural and provisional services in many cases (Winberg, 2010).

Wildlife Conservation in such areas has become a challenge for policy-makers and requires multidisciplinary approaches (Linnel and Boitani, 2012). The goal of wildlife conservation is to ensure that nature would be around for future generations to enjoy and also to recognize the importance of wildlife and wilderness for humans and other species. Forests are an important part of our states environment and economy. When they are well managed they provide clean air, and water, home for wildlife, beautiful scenery, place for recreation and more than 5000 products we all use every day(Jackson, Wangchuk and Dadulg, 2003).

A wide array of human dimensions—such as local people’s perceptions of the value of wildlife, how they want wildlife to be managed, and how they affect or how they are affected by wildlife influence wildlife management decisions (Decker, Brown and Siemerwf, 2001 Most of the studies have focused solely on the ecological side of human–wildlife conflict with no shut from the social sciences (Ambasthak, Hussain and Badola, 2007). Assessing local people’s attitudes can provide insight on how they will behave, for example, how they comply with wildlife protection regulations, how they respond to economic losses caused by wildlife, and the degree to which they are willing to coexist with wildlife (Fulton, Manfred and Lipscom, 2006).

Attitudes toward wildlife vary because factors affecting attitudes such as interactions with wildlife are spatially heterogeneous (Naughton and Treves, 2005). where management of increasing human–wildlife conflict has become a challenge for policy- A number of studies have been conducted on attitudes of local people toward carnivores in different area (Bagachi and Mishra, 2006.); including some studies in the Himalaya makers (Badola,2008); (Jackson, 2003); (Ogra,2012). In general, costs associated with conservation, such as crop damage and livestock

predation by wildlife, have negative effects on local attitudes, while benefits from conservation may have positive effects (Fiallo and Jacobson, 2005). Usually, women, older people, people with their education level, people working in a natural-resource-dependent profession, or people living in a rural area within a carnivore distribution range tend to have more negative attitudes (Kellert, 2004). Negative attitudes toward wildlife often encourage people to kill wild animals, which take a toll on conservation efforts (Wang, 2006)

1.2 Statement of the problem

Ambicho natural forest (ANF) is a forest which is rich by biodiversity that means rich by both flora and fauna species. But up to now a day there is no empirical study done on issues pertaining to attitudes and perceptions of local peoples in Wildlife Conservation in study area and the negative attitude and perception of the local community can affect the safety and existence of wildlife conservation, This often leads to local communities being completely left out in practices decisions making. In addition to this it makes local communities to retaliate by killing wild animals illegally. Lack of positive attitudes and perceptions of local peoples has problems making local people to view the forest and its wildlife conservation as a liability due to lack of awareness. Presence of disagreement between local communities in wildlife conservation Activities.

1.2.1. Significance of the study

The Natural forest gives positive coexistence between human and environmental wellbeing and there is need to assess the attitudes and perceptions of local people towards wildlife conservations practices development within and around forest, with a view of gaining local support from the forest. Information is also needed to provide a basis for knowing people's attitudes and perceptions in any wild life conservation since its operations can only succeed if people are involved, and also benefiting from forest generated to wildlife conservation. The study is important because the results help in laying strategies to help integrate local people in the management of forest as well as their involvement in benefit sharing thus leading to increased conservation and protection of wildlife resources. Findings of the study will facilitate the writing of a thesis which would act as a reference for students and researchers with interests in similar or related studies.

1.3. Objectives

1.3.1. General Objective

- To Assess Attitudes and Perceptions of Local peoples in Wildlife Conservation in and around Ambicho Natural Forest Limo District, Hadiya zone, Central Ethiopia

1.3.2. Specific Objectives

- To Assess Attitude and perception of local community towards wildlife conservation In the Study Area.
- To Determine the Level of Local People's Participation in Wildlife Conservation Practices in the Study Area
- To Identify the Factors Influencing the Attitudes and Perceptions of Local Peoples In Wildlife

1.4 Research questions

1. How much level of the local people are involved in wild life conservation practice in study area?
2. What factor influencing the attitudes and perception of local peoples for wild life conservation practices?
3. What is the attitude and perception of local communities toward wildlife conservation In the study area/

1.4.1. Justification of the study

Some of local people are important in the conservation of natural resources and hence by extension to wild life conservation. They should feel part of essential things for wild life conservation activities by being involved in their management and also be allied access to various benefits accruing from forest resource. Few of local people possess indigenous knowledge which should be incorporated in contemporary approaches towards enhancing good management of the forest resources for wild life conservation practices. They should also be beneficiaries of benefits accruing from forest and other related activities to support themselves so as to minimize unsustainable practices like illegal cutting plants from the forest (Farooque and Saxena, 2005).

1.4.2. Limitation of the Study

The research was conducted in Ambicho Natural Forest. However, some limitation happened during field survey. Therefore, the researcher believed that the limitation of the study would be mainly time limitation, financial constraint, lack of adequate and accurate data, lack of full materials. But the researcher managed these challenges by used different techniques such as by searched financial and material sponsors, information centered of the study area.

2. LITERATURE REVIEW

2.1 Wildlife Conservation in Ethiopia

Wildlife conservation is the social process including both professional and lay activities, which defines and seeks to attain wise use and perpetuation of wild animals and the biotic communities to which they belong. Wildlife conservation is the state of Managing and conserving flora and fauna species without negatively affecting the ecosystem (Infield, 2004). Wildlife conservation is perhaps as old as mankind since even in early times there are traditional customs, rules, beliefs and practices relating to wildlife and wildlife conservation. In pre-colonial Africa, although environmental conservation was not institutionalized and known, most societies lived in symbiosis with their surrounding environment.

Wildlife played an important part in the day-to-day life of Africans, providing them with food and clothing (Durbin and Ralambo, 2001). Since there existed no formal policy or regulation on wildlife conservation the customary rules, practices and values enhanced the attitudes and perceptions local communities had towards wildlife. More often, these are more positive thereby encouraging people to protect forest thereby contributing to the development of wildlife conservation.

2.2 Importance of wildlife conservation

The importance of wildlife resources to the society and the need to conserve wildlife cannot be overemphasized (Fulton, Manfred and Lipscomb 2006). Wildlife has numerous benefits that include being a source of food, tourist attraction, a reservoir for genes, a source of employment, and a principal component of the ecosystem. All these wildlife values and benefits influence tourism development either directly or indirectly. In summary, wildlife is a natural resource of biological, economic, social, recreational, educational, environmental, and nutritional value to the present as well as future generations. Wildlife is a valuable resource that should be protected and conserved (Infield, 2004).

2.3. Factors that Influencing the Attitudes and Perceptions of Local People

Toward Wildlife Conservation

2.3.1. Socio-Economic Factors

Socio-economic factors affecting local residents' attitudes and perceptions towards tourism development have been alluded to by various tourism researchers (Patil, 2011). In most cases socio-economic factors play a major role in explaining variations in resident's attitudes towards tourism development and wildlife conservation (Conover, 2002). Some of the factors that affect the attitudes and perception of local community toward wildlife conservation includes wild animals competition with domestic animals and disease transmissions from wildlife to domestic animals, crop raiding by wild animals, destruction of domestic animals by wild animals and lack of compensation. In contrast, there are some attitudes and perception differences among groups with various demographics. For instance, gender has explained some of the variance in reaction towards tourism and tourists from the local communities living around any protected areas. Age has also been explored as a factor explaining some of the variability in attitude and perceptions towards local community change and tourism. Additionally, birthplace can also influence attitudes and perceptions towards tourism development. Also alludes that ethnicity is also a factor influencing attitudes and perceptions towards tourism development where there are some local communities belonging to a certain ethnic groups to always have the right to benefit from wildlife resources found in the protected area (Allport, and Gordon. 2005).

2.3.2. Human-Wildlife Conflict and Their Implications on Attitudes and Perceptions

Of Local community

Human-wildlife conflicts (HWC) can be defined as situations where use of resources by humans and wildlife affect or are perceived to affect each other in a negative way (Parkhurst, 2006). The extent to which these interactions cause conflict reflects increased pressure for utilization of those resources in a restricted area, or decreased compatibility in uses. With this, the conflict takes the form of illegal or excessive human use of protected areas or resources, and land use practices outside or bordering the protected area which in turn affects wildlife interests both from inside and outside protected areas.

Wildlife conflicts also arise when local people are denied to utilize wildlife resources in protected areas (Madden, 2008). Other conflicts occur when wildlife move outside the protected areas and consequently undermine people's livelihood and properties (Parkhurt, 2006) State that wildlife or the wild animals will in turn experience restricted range as their habitat is converted to human uses that preclude wildlife utilization.

2.4. Forest for Wildlife

Forest is very essential and most important things for wild life management prescription or condition that will serve all wildlife all the time for all forest types (Fiallo and Jacobson, 2005). Forest habitat conditions change over time as the plants and trees grow, die, and are affected by drought, insects, disease, wind, and flood. Each forest type has its own unique characteristics and can support a broad assemblage of wildlife species. Because of this, it is important to understand your forest and tailor your wildlife management plans to it. For example, in a pine forest one would expect to find animals that rely heavily on pine nuts as a food source conserved (Durbin and Ralanbo2001).

Given the presence of these animals, one would expect predator species that prey on rodents and small birds. To a large extent, the character of a forest and the wildlife it supports is determined by climate. Because of the dry summers and extremely cold winters, there are relatively few amphibians in those forests. Coastal redwood forests have winter and spring rains and summer fog that greatly influence the forest vegetation and moisture regimes. The summer fog, coupled with the presence of large logs and thick leaf litter on the forest floor, provides suitable year round moist conditions to sustain high numbers and diversity of amphibians (Bagachi and Mishra, 2006). Understanding the differences between forest types can assist in the development of management regimes aimed at protecting or encouraging wildlife species. For example, the redwood forest is a long-lived, relatively stable environment that is not subject to catastrophic fires or pest and disease outbreaks; the natural disturbance regime of low-intensity, frequent fires coupled with long-lived trees does not lead to the rapid recruitment of habitat elements such as tree hollows or dead tops. Being scarce, these habitat elements deserve a higher level of consideration when managing coastal redwood forests.

3. MATERIALS AND METHODS

3.1. Description of the Study Area

Ambicho natural forest (ANF) is one of the most interesting natural forests in Ethiopia which is located in SNNPR particularly found in Hadiya zone. Ambicho natural forest is bordered on the North by shasho Keble, on the South by shambalale village, on the East by batena village and on the West by keleta village. ANF is classified in to two agro climatic zone 62% most mid highland and 38% derided high land the average main annual temperature is 21.30 c and annual rain fall of the district ranges 300 mm to 1465 mm and 1132.5 mm main annual average. It is geographically, coordinated between 7⁰ 39' 59.99"N and 37⁰ 44:59.99"E .The area is best described as cultivated land scattered trees for some species and which composed two different habitat associations such as wood land and shrubs.

In the area there are same few highly mountains and gully area the soil is brown sands, salt and highly susceptible for erosion the altitude of the study area from 540 m - 2972 m. In the ANF there are different wild life animal herbivores live *Common jackals* and among the *primate baboon, monkey* and the live. There were also other animals like rabbit, fox and cheetah in the forest Some Carnivores have been traditional hunted for skin and meat like leopard and *spotted Hayne* is highly dominated in the area. Agriculture is the major activities in the district and it account for more than 75 % out of the local subsistence. the main crop type in the district are tiff, maize, cereal crops and coffee, inset, white, barley, and sorghum are anther crop types in the district.

3.2. Data Collection Methods and Sampling Technique

Primary data was used for this study. The primary sources of data which are used for this study include household survey, focus group discussion, key informant interviews, and field observation. Purposive sampling technique was employed to select the sample households in study area that is why because it is the best way to get respondents who have efficient information and more Indigenous knowledge about the study area. In addition to these Secondary sources of data are used for this study which includes reports, plans, official records, project reports, research papers, and data files from internet and district forestry and environmental protection office reports. The total household of the study area was 160 among those total

household the sample household for this study was 40 respondents selected by four stages purposively. In the first stage, 10 respondents were taken from shasho Keble and 10 respondents were taken from shambalale village that are selected purposively based on the proximity and adjacent to the forest. Whereas 10 respondents were taken from batena village and 10 respondents were taken from keleta village that are selected purposely based on having indigenous knowledge and who lives more than 20 years around the study area.

3.3. Focus Group Discussion

A focus group discussion is another qualitative method of data collection instrument which was used in the study. Two focus group from shasho Keble and another two focus group from shambalale village were conducted with 10 respondents (6 male and 4 female) of varied aged who are live in the study area for more than 18 years. The key participants were local communities, indigenous people, cultural tourism office employees and religious leaders. The discussion enabled members to freely speak on issues pertaining to what looks like the attitudes and perception of local people as well as socio-economic impacts and issues relating to the existence of the forest and importance of community based wildlife protection in the study area. In addition to that we have discussed about how Hwc were happen and which kind of crops are highly affected. Key informant interviews which are used include local communities, cultural tourism office employee's, indigenous people, religious leaders and the others. The data were collected from the respondents directly through face to face. Especially the interview methods within these stack holder were to know issue pertaining the attitude and perception of local communities toward wildlife conservation. The researcher was used camera, paper, pen and other relevant materials for collecting data during the accurate data collection. Field observation was conducted throughout the process of the research in order to ensure the validity of information obtained. It should have done with the purpose of getting guidance for development of the formal question and to be acquired with the values of local people. Field observation was the most important tool of data collection for quantitative survey of this research. The questionnaires have both open and closed ended questions. Open-ended questions solicited responses from the respondents on various issues under study and close ended questions are yes or no questions. They also enabled respondents to give their varied views based on their experiences and thoughts.

3.4. Data analysis

In order to analyse the data after the collection of necessary data it was analyzed by using descriptive statistics. The data collected from group discussion and key Informants was summarized by using description fashion and presented by Descriptive statistical tools such as tables, graphs and percentages was used.

4 RESULTS AND DISSCUTION

4.1. Demographic Characteristics of

The Respondents

Demographic characteristics of the respondents in the study area were involves different categories such as sex age and educational status. They are explained in the following ways in the table below. The age range of the respondents ranged from 20 to 80 years.

Table 1: demographic characteristic of respondents in the study area

Demographic characteristic	Category	Frequency of respondents	Percent (%)
Sex	Male	25	62.5%
	Female	15	37.5%
Age	20-40	3	7.5%
	41-60	17	42.5%
	61-80	20	50%
Educational status	Illiterate	28	
	Male	16	57.1%
	Female	12	42.9%
	Literate	12	
	Primary	3	25%
	Secondary	4	33.3%
	Diploma	2	16.7%
Write and read	3	25%	
Total		40	100%
Total age percent (%)		40	100%

According to educational status from the total of 40 respondents 70% of the respondents were Illiterate among this illiterate 42.9% were female and 57.1% are male respondents, and also the

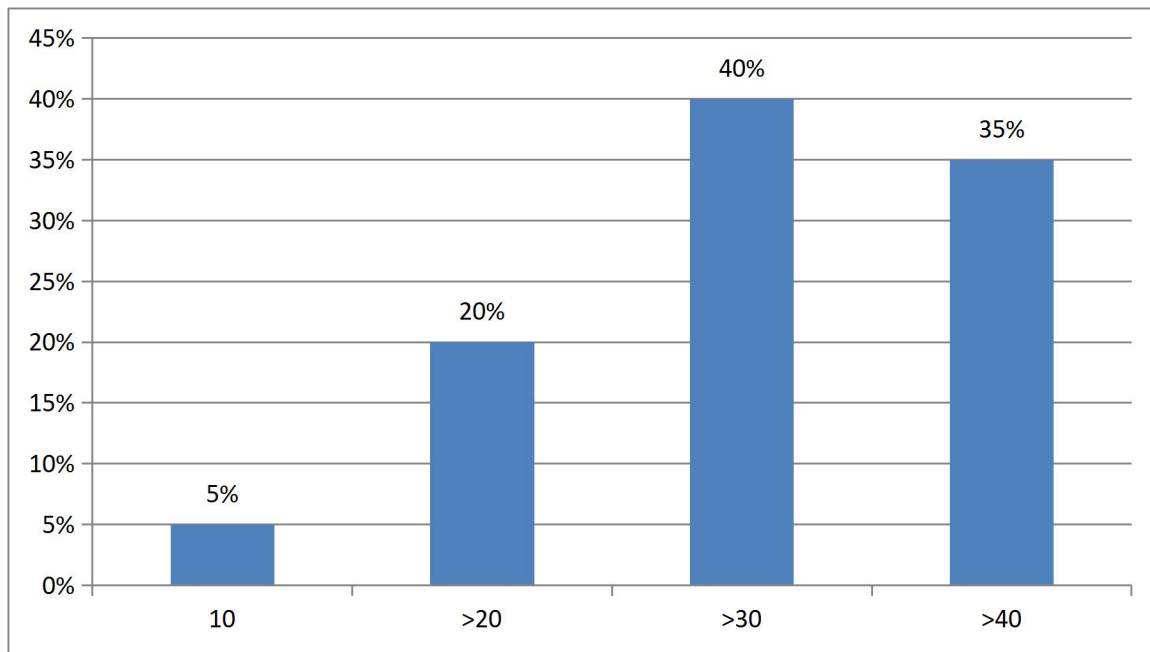
rest 30% were Literate from those literate respondents 25% of respondents were primary students, 33.3 % of the respondents were secondary students, 16.7% of the respondents were diploma and the rest 25 % of respondents were can read and write. There for 50% of the literate people were primary students and they can read and write and the rest 50% were diploma and secondary students. According to sex category 62.5% of the respondents were male and the rest 37.5% of the respondents were female participant.

Regarding to time of settlement of the respondents, of the total respondents 7.5% are settled 20-40 years ago, 41.67% are settled 41-60 years ago and 50% are settled 61-80 years ago. 50% of the respondents are settled in shasho keble near to ANF for >40 years ago, 41.67% of the respondents are settled shambalale village in and around ANF for >30 years ago and the rest 7.5% of the respondents are settled in keleta and batena village near to ANF for >20 years ago.

Totally the respondents of the study areas were settled >20 years ago in and around ANF specially in limo district.

.Respondents(%)

Settled place of the respondents



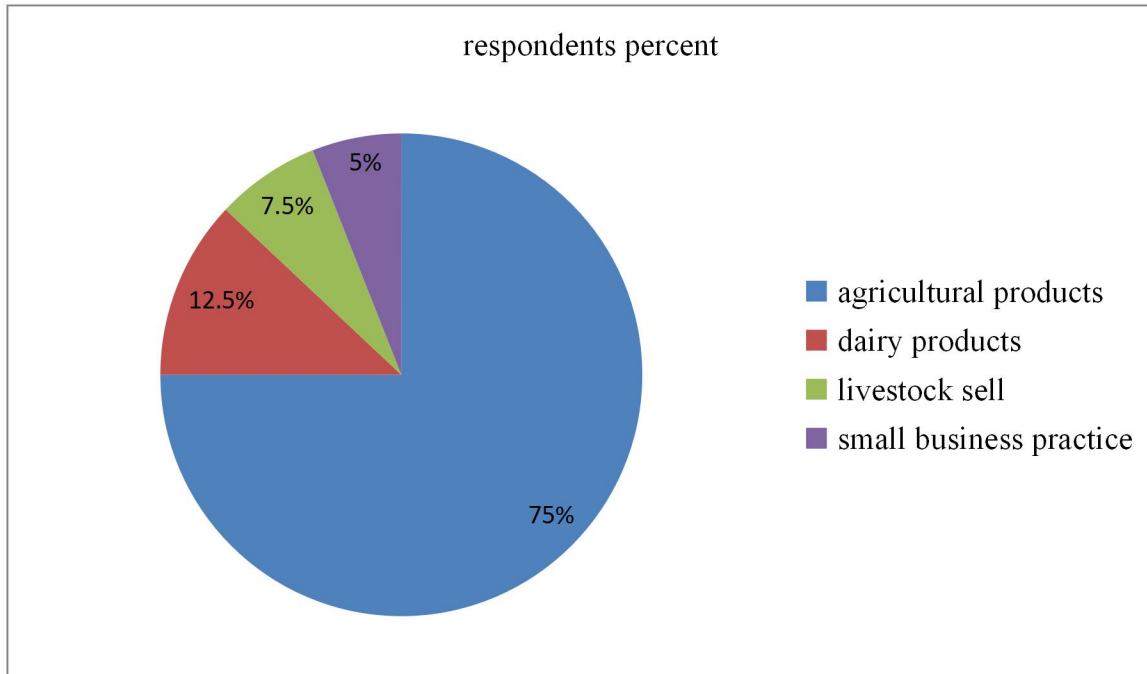
shasho keble

Limo district

Figure 1: above show duration of the respondents settled in the place of residence

4.1.1. SOCIO ECONOMIC (LIVEL HOOD) SOURCE OF THE RESPONDENTS

According to the focus group discussion and field observation from the total of 40 respondents(30) 75% of the respondents were economically depend up on agriculture or farming, (5)12.5% of the respondents were depend up on dairy products and trading activity, (3) 7.5% of the respondents were depend up on small business, (2)5% of the respondents were depend up on livestock sell and government employee.



Agricultural products (75%), dairy products(12.5%), small business activity(7.5%) and livestock sell(5%).

Figure 2:Above show the economic source of the respondents

4.2 Attitudes and Perceptions of Local Communities Toward Wildlife in the Study Area

According to the accurately collected data from the study area majority of the respondents had negative attitudes and perception toward wildlife that means almost 30 respondents (75%) of the respondents had feeling negative attitude toward wildlife, but some of the respondents had positive attitudes and perception toward wildlife that means almost 8 respondents (20%) of the respondents had feeling positive attitude toward wildlife, and also few of the respondents were neutral that means 2 respondents (5%) of the respondents have neither positive nor negative attitude and perception toward wildlife that means they have neutral attitudes and also they don't carry about wildlife conservation.

Table 2: The Attitudes of the Local Community Toward Wildlife

Attitude and Perception of Local Communities	Frequency	Percent(%)
positive	8	20
Negative	30	75
neutral	2	5

4.3. Factor that Influence the Attitudes and Perception of Local Community

Toward Wildlife Conservation.

According to collected data from the respondents they were explain and reason out their cause that push up their attitude and perception to having either positive or negative attitudes. There for from the positive attitudes and perception of the respondents (2)25% of the respondents were reason out due to its tourist attraction and generating foreign exchange, (2)25% of them were reason out used to balance ecosystem and also (2)25% of them reason out due to construction purpose, (1)12.5% of them were reason out used to collection of wood fire and thatching grass and (1)12.5% of them reason out used to create job opportunitis for local communities .

Table 3: Reason for Local Communities Having Positive Attitude Toward Wildlife Conservation.

Reasons	Frequency	Percent(%)
Attracting tourist and generating foreign exchange	2	25
Collection of wood for fire and thatching grass	1	12.5
Constructing of house	2	25
create job opportunity to local people	1	12.5
Balance ecosystem	2	25

From the negative attitudes and perceptions of the respondents 33.33% of the respondents were explained their reason due to crop raiding, 23.33% of them were explained their reason due to destruction of domestic animals, 20% of them were explain their reason due to disease transimission from wild animals to domestic animals, 10% of them were explained their reason due to lack of knowldge for local community about the value of wild animals, 3.33% of the respondents were explained their reason due to having negitive attitude on nature with out any affection, 3.33% of them were explained their reason due to lack of strong governmental rule for wild animal conservation and 6.7% of them were explained their reason due to lack of compensation (lack of insurance).

Table 4 : Reasons for Local Communities Having Negative Attitudes Toward Wildlife.

Reason	Frequance	Percent(%)
Crop raiding	10	33.3
Having negitive attitudes on wildlife with out any affection	1	3.33
Lack of knowlde about the value of wildlife	3	10
Disease tranismision from wildlife to domestic animals and competition with domestic animals	6	20
Lack of insurance or lack of compensation	2	6.7
Lack of strong governmental rule for conservation of wildlife	1	3.33
Destruction of domestic animals	7	23.33

4.4 Attitudes of Local Communities toward the Existence Value of ANF

Majority of the respondents had negative attitudes toward the existence of ANF due to crop raiding, destruction of domestic animals, competition with domestic animals, lack of compensation, Lack of strong governmental rule for conservation of wildlife, Lack of knowledge about the value of wildlife, Having negative attitudes on wildlife with out any affection, disease transmission. Whereas some of the respondents have positive attitudes toward the existence ANF due to attracting tourist and generating foreign exchange, Collection of wood for fire and thatching grass, create job opportunity to local people, Constructing of house and Balance ecosystem

4.5. Local people's participation in wildlife conservation

Local participation as the ability of local people to influence the outcome of development projects, such as ecotourism that have an impact on their lives. Community participation is an aspect of giving local people more opportunities to participate effectively in development activities (Batisse, 2002). These include empowering people to mobilize their own capacity, be social actors rather than passive objects, manage the resources, make decisions and control the activities which affect their lives. World Bank expert on community participation makes a useful distinction between four levels of intensity in local participation (Madden, 2008).

Information sharing where project designers and managers share information with the public in order to facilitate collective or individual action and this is the first level. The next level of participation is consultation where the public is not only informed, but also consulted on key issues at some or all stages in a project circle. Decision-making is the third level where the public is involved in making decisions about project design and implementation. The highest level of local participation is called initiation action. This occurs when the public takes the initiative in terms of actions and decisions pertaining to the project. This last stage often enables local people to have access to benefits accruing from wildlife, tourism and related activities and projects systems.

4.6. Major Crop Raiding Wild Animals and Livestock Predation Found In the Study Area

Crop raiding by wild animals cause food insecurity and loss of income to forest adjacent to communities (Quirin, 2005) and (Deboer, WF.,2008). The respondents reported that there was both the problem of crop damage and livestock predations by wild animal are exists. Based on respondent's idea, Gelada baboon, warthog and grivet monkey were causes crop raiding in different ranks. Farmer ranked crop raiding wild animal such as (48%) of the respondents put Gelada baboon was commonly reported crop raiders which cause much damage and ranked first. (27%) of the Respondents put warthog as second crop raiders in the study area.(15%) of the respondents put grivet monkey was the third crop rider,(10%) of the respondents put ape and bush pig are ranked as the same rank fourth. For those above problems most of the local communities traditionally used different method to defend crop raider animals mostly such as leopard and hyena from their crops such as guarding, fencing and scarecrow, but some of the local communities were used other control measure such as changing type of crop cultivated and changing the route of livestock.

Table 5: Wild Animal Crop Raiders Ranked by Respondents

Wild Animal	Scientific Name	Present (%)	Ranked based on damage they cause
Gelada Baboon	<i>Theropithicus gelada</i>	48	1
Warthog	<i>Phacochoerus africanus</i>	27	2
Grivet Monkey	<i>Chlorocebusa ethiops</i>	15	3
Ape and bush pig		10	4

DISSCUSSION

Majority of respondents are agreed with the existence of the Abijata Shalla Lakes national park (*Worku, 2014*). And it is similar with (*Nepal, 2017*) finding that was conducted in Chebera Churchura national park. Local communities' view about the existence value of ANF is significantly different from those who have land extremely inside the Forest. Almost all of the respondents approximately 85% of them do not have land inside the natural Forest feels good for the existence value of the Forest. But few of the respondents who have land inside or adjoining the natural Forest feels bad. The reason given for this is agricultural crop damage by wild animals like warthog, ape, bush pig and Gelada baboon. Few of the Respondents who live inside or near the Forest suffered by above mentioned problems and other wild animals' problems like livestock depredation and disease transmission. The attitude of local communities toward ANF showed significantly different from the study district to the respondents who have land inside the natural forest, the reason for this is because of the presence of a variation on wildlife destruction on the properties of local communities among the study area. This is contrary/opposed/ with (*Newmark, 2003*) finding.

Most of the respondents have feeling positive attitudes toward the conservation importance of ANF and some of the respondents have feeling negative attitude toward conservation importance of ANF. This result is similar with (*Worku, 2014*) finding, but different from (*Newmark, 2003*). Result, that studied in Senkele Swayne's Hartbeest Sanctuary, (*Worku and Newmark 2014*) in Abijata Shalla Lake national park, stated that most of the respondents opposed the existence of the park. The attitude of local communities toward ANF are significantly different among education level, Almost all proportion of the respondents who attend from grade 9 to University had positive attitude towards the natural Forest, whereas almost all of illiterate people felling negative attitude. This indicated as education levels have factor to influence on the attitude of local communities towards the conservation of wildlife and the Forest. The people attend high education level have positive attitude towards protected area and able to support conservation activities (*Badola, 2008*). This result is similar with the work of (*Infield 2008*), and (*Newmark, 2003*).

Studies on perceptions and attitudes of local people towards participation in collective forest management activities are limited in Ethiopia in particular and worldwide in general (Kelbessa, 2007). The present study explored perceptions and attitudes of local people towards forest conservation and developmental interventions by external agents, identifying sources of conflicts, and proposing solutions in future management and policy decisions in the context of WWF. An attempt was made to explain perceptions and attitudes of the local people that possibly influence engagement in the co-management scheme of the WWF through the best management approach. This is because perceptions and attitudes are understood to be important antecedents of people's behavior in relation to natural resources management or conservation (Schwartzman, 2004). Thus, many contemporary studies considered perceptions and attitudes of local people as a major topic, mostly, in relation to conservation projects or in the context of wildlife and nature reserve management (*Worku, 2014*).

The study generated relevant and informative knowledge about how human-wildlife conflict happened, the respondents noted that deforestation, overgrazing, habitat destruction and, agricultural land expansion were the major root causes for the happening human to wildlife conflict (Patil, 2011) (Nyhus, 2005). In forest management, attitudes of people are either positive or negative outlook to particular forest management activities (Elias, 2004). In generally, perceptions and attitudes of the local people towards natural forest management can be positively influenced by increasing their knowledge (Wolff, 2001). More importantly, public awareness programs and conservation education can assist in improving perceptions and attitudes of young people towards ANF. Promoting direct participation of the local residents in decision-making and implementation of natural forest strategic plan can also mitigate potential conflicts and assure long-term public supports towards natural forest.

CONCLUSION

This study was conducted to assess the attitude and perception of the local community toward wildlife conservation in and around Limu District Hadiya Zone, central Ethiopia. The majority of respondents had negative attitudes and perceptions toward wildlife conservation in the study area, which is due to the presence of crop raiding (33.3%), having a negative attitude on wildlife without any reason (3.33%), destruction of domestic animals (23.33%) and competition with domestic animals and disease transmission (20%), lack of knowledge about the value of wildlife (10%) and lack of strong governmental rule for conservation of wildlife. Whereas some of the respondents had positive attitudes and perceptions toward wildlife conservation in the study area, which is why because the local people get benefits from the natural forest like collection and wood fire (12.5%), create job opportunity to local people construction of house (12.5%), ecological value (25%) attracting tourists (25%). Identification of different factors that influence the attitudes and perceptions of the local community about protected areas and the value of wildlife is vital for local people support in conservation activities. Crop raiding and livestock predation were the major factors that influence the negative attitude and perception of the local community towards wildlife. Respondents ranked crop raiders wild animals such as gelada Baboon was commonly reported crop raiders which causes much damage, Warthog was the second crop raiders mostly and Grivet monkey was the third crop raiders followed by warthog. The most livestock predators mentioned were Leopard and Hyena, which causes the destruction of livestock like, Dogs, sheep, donkey, horse, Chickens and Goats.

RECOMMENDATIONS

Based on the result of study, the following points were recommended for the local communities' rural villages and other stakeholders in order to encourage positive attitudes toward wildlife conservation.

- Local people should participate in the process of conserving wildlife in order to foster
Positive outlook towards wild animal.
- Stakeholders should work together to strength wildlife conservation as well as their
Habitats and relocate agricultural activities out of wild animal ranges.
- Livestock grazing and other human activities that degrade the natural habitats of wild
Animal should be strictly reduced by developing implementing rules and regulations.
- Local people should participate in the process of conserving wildlife in order to foster
Positive outlook towards wild animal.
- Implementation of rural development should be designed to move the local people
To the buffer zone to reduce human activities in habitats of wild animal
And the Movement of wild animal from their habitats to farming lands.
- Local communities should increase plantation in order to minimize crop raiding
By wild animals.
- Extensive tree cutting should be minimized
- The concerned body must educate the local community about the value of wildlife in order
to change the negative attitudes and perceptions of local community.

REFERENCES

- Allendorf, D., 2007. Residents' attitude toward three protected areas in South Eastern Nepal, Biological conservation.
- Allport, and Gordon. 2005. "Attitudes," in A Handbook of Social Psychology, ed. C. Murchison. Worcester, MA: Clark University Press, 789–844.
- Ambasthak, Hussain, S.A. and Badola, R., 2007. Resource dependence and attitudes of Local people toward conservation of Kabartal Itland; *A case study from The land of Gangetic plains Itland Ecology and Management.*
- Badola R., 2008. *Attitude of local people towards conservation and alternative to forest resources: A case study from the low Himalayas. Biodiversity and conservation.*
- Bagachi, S. and Mishra, C., 2006. Living with large carnivores: predation of livestock by the Snow leopard .
- Bandara, R. and Tsdell, C., 2003. Comparison of rural and urban attitude to the conservation of Asian elephants in Sri Lanka. *Emerical evidence.*
- Baquete, D. and Deboer, F., 2008. Natural resource use, crop damage and attitudes of rural people in the vicinity of the Maputo Elephant Reserve. *Mozambique. Environ. Conserv.* 25(3), pp.208-218. <http://dx.doi.org/10.1017/S0376892998000265>. Decker, D.j.,
- Barthwal, S. and Mathur, B., 2012. Teacher knowledge and attitude towards Wildlife conservation mountain research and development.
- Brown, L. and siemerwf. 2001. Human dimension of wildlife management in North America. *Bethesda, moithe wildlife society.*
- Batissesm, 2002. The biospherereserve: a tool for environmental conservation and Management. *Environ Conserv.* 9:101–111.
- Conover, M., 2002. Resolving human wildlife conflicts the science of wildlife

- Damage management, *Lewis Publishers, New York*, pp. 418.
- Durbin, J. and Ralambo, A., 2001. The role of local people on successful maintenance of protected areas in Madagascar. *Environ Conserv*, 21:115–120.
- Eagly, Elice, H. and Shelly, C., 2008. "Attitude Structure and Function." *In Handbook of Social Psychology*, ed. D.T. Gilbert, Susan T. Fiske, and G. Lindzey, 269–322. New York: McGraw-Hill.
- FarooqueNA, and SaxenaKG. 2005. Conservation and utilisation of medicinal plants in High hills of the central Himalayas. *Environ Conserv*, 23:75–80.
- Fiallo, E. and Jacobson, S., 2005. Local communities and protected area: attitude of rural residents towards conservation and Machilla National Forest. *Tanzania (phdddissertation)*. London, uk.
- Fazio, R. and Olson, M., 2003. Implicit Measures in Social Cognition Research: Their Meaning and Use. Retrieved from: "*Archived copy*" (PDF). *Archived from the original (PDF) on 2014-03-23. Retrieved 2012-04-19.*
- Fulton, D., Manfred, M. and lipscomb, j., 2006. Wildlife value orientations A conceptual and measurement approach Human dimension of wildlife.
- Infield, M., 2004. Attitudes of a rural community towards conservation and a local conservation area in Natal, South Africa. *Biol Conserv*, 45:21–46.
- Jackson, R., Wangchuk, R. and Dadulug. 2003. Local peoples attitudes to ward wildlife conservation in the Hemis National Forest, with special reference to the conservation of large predator.
- Kellert, S., 2004. public attitudes towards Bear and their conservation. . *International conference on bear research and management*.
- Linnel, J. and Boitani, L., 2012. Building biological realism in to wildlife management policy. *Italian Journal of mammalogy*, PP 23:80-91.

- Madden, F., 2008. *The growing conflict between humans and wildlife: law and policy as contributing and mitigating factors. Journal of International Wildlife Law and Policy*, , pp. 189–206.
- Naughton- Treves, A., 2005. *Socioecological factor shaping local support for wildlife Crop raiding by elephants and other wildlife in Africa.*
- Nepal, S.and Weber, E., 2017. *The attitudes and practice of local people toward wildlife In chebera churchura national park, Ethiopia. International Journal of biodiversity and conservation*
- Newmark, W., Leonard, N.L., Sariko, I. and Gamassa., GM., 2003. *Conservation attitudes of local people living adjacent to five protected areas in Tanzania. Biol, 63(3),pp.177-183. Conserv.http://dx.doi.org/10.1016/0006-3207(93)90507-W,*
- Nyhus, P.J., Osofsky, A., Ferraro, P., Madden, F.and Fischer, H., 2005. *Bearing the costs of human-wildlife conflict: The challenges of compensation schemes .International Biological detraction and Biological degradeion,45(3-4), pp 97-102.*
- Ogra, M., 2009. *Attitude towards resolution of human wildlife conflict among attitude towards and tigers in Nepal. Amblo.*
- Parkhurst, J.A., 2006. *The center for Human-Wildlife conflict resolution at Virginia Tech: A Model of future use. Department of Fisheries andWildlife Sciences. Virginia Tech, Blacksburg, Virginia.*
- Patil, Y., 2011. *Conflict between Human and Animal in India:. The case of endangered Species, in India.*

- Pretty, J., 2004. Social capital in biodiversity conservation and management. *Conservation Bio*, 18 (3), pp.631–638. <http://dx.doi.org/10.1111/j.1523-1739.2004.00126>.
- Quirin, C., 2005. Crop Raiding by wild vertebrate in the Illubabor zone, Ethiopia.
Reports submitted In partial fulfillment of the post Graduate Diploma in Wildlife Management. Pp1-52
- Readen and Wilson. 2007. mammal species worlds Taxonomic and Geographic reference.
In *Smithsonian Institution Press Washington*.
- Schwartzman, S., Moreira, A. & Nepstad, D., 2004. Rethinking tropical forest Conservation: Peril in Parks. *Conservation Biology*, 14 (5), pp.352-1357.
- Shrestha, R., 2006. Linking conservation and development: An analysis of local people's Attitude towards Koshi Tappu Wildlife Reserve, Nepal. *Environment, Development and Sustainability*, 8: 69-84.
- Tedla, S., 2005. Protected areas management crises in Ethiopia. *Journal of the Ethiopian Wildlife and Natural History Society* 16.
- Wang, S.W., Lassole, J.P. and Curtis, P.D. 2006. Farmer attitude towards conservation in Jigme Singyewangchur National Forest, Bhutan. *Environmental Conservation*.
- Winberg, E., 2010. Participatory forest management in Ethiopia, practice and experiences. Food and agricultural organization of the United Nations, sub-regional office for eastern Africa, Addis Ababa, p 58 Google Scholar.
- Wood, W., 2000. "Attitude Change: Persuasion and Social Influence". *Annual Review of Psychology*.
- Wolff, V., 2001. Wildlife in Ethiopia. *Ethiopian Forestry Review*, 2, pp. 3-13. *Psychology*. 51: 539–570. [doi:10.1146/annurev.psych.51.1.539](https://doi.org/10.1146/annurev.psych.51.1.539). [PMID 10751980](https://pubmed.ncbi.nlm.nih.gov/10751980/).

Worku, M., 2014. Perception and attitude of the local community toward elephants in ASLNP, Hawassa University, Ethiopia.

Yalden, D.w., 2003. The extent of high ground in Ethiopia compared to rest of Africa.

APPENDIX

Wolkite University

COLLEGE OF AGRICULTURE AND NATURAL RESOURCE

DEPARTMENT OF WILDLIFE AND ECOTOURISM MANAGEMENT

Dear participants, I would like to express my sincere Gratitude Thanks for sharing your valuable time, for your giving direction as well as for your participation!

I am Daniel Demise graduate student at Wolkite University. This part of degree program assess the attitudes and perception of local community toward wildlife conservation in and around Ambicho natural forest, Limo district, Central Ethiopia.

In the case of partial fulfillment of the requirements for the degree of Bachelor of Science of Wildlife and Ecotourism management.

The purpose of this interview is to gather detailed information about the attitudes and perceptions of local community toward wildlife conservation in and around the study area. I can assure you that any information that provide in this interview will be kept confidential. There for I Kindly request your cooperation and patience for responding every Question by considering the importance of valuable response to study. Thank you!!!

APPENDEX 1

The survey questionnaire for formal interview Households survey in and around Ambicho natural Forest, limo district, Hadiya zone, Central Ethiopia.

General information

1, Name of Village Name of interviewer.....
signDate of interview day monthyear.....

2, Name of household head.....

Sex Male Female

3, village head4.Interview duration.....

Keble's _____ village _____ 5. Level of education 1) illiterate 2) literate 3) 1-4 grade
4) 5-9 grade 5) grade 10 and above 6) Univeristy level

This Section is about the crop usage ways and the whole general activity of the local community.

Gender Male Female.....Age.....

4, Marital status A, Married..... B, Unmarried C)
Divorced

5, Educational Status

A, Farmer..... B, Merchant.....

6. Occupation

A. Employed B, Unemployed.....

7, what are households major source of income

A, Dairy products

B, Crop cultivation.....

C, Small business.....

D, Livestock sell.....

8. What type of crops you grow in your farm land? Put in order to know which one is the most 1)

Maize 2) sorghum 3) tiff 4) wheat 5) others

9. Do wild animal cause damage to your crops? Yes/ No.

10. What is the cause for the happening of HWC in your area?

A, Agriculture expansion

B, grazing livestock

C, Fire wood collection

D, House construction

11. Which wild animal are more responsible for crop damage? A) Olive Baboon B)

Warthog,

C) Grivet monkey, D) Gelada Baboon, E) ape F) Leopard

12. Which wild animal are more responsible for crop damage during day time on which crop?

A) warthog B) grivet monkey C) Monkey D) Gelada baboon E) APE

13. Which wildlife is more responsible for crop damage during night time on which crop types?

A) warthog B) grivet monkey C) Monkey D) Gelada baboon E) APE

14. If yes for Q .11 above in what time more cause damage? 1) night2) day 3) both day and night

4) others

15. Which type of crop is more damage by wild animal? 1) Maize 2) tiff 3) sorghum 4) wheat 5)

no damage in general

16. Which type of crop is least damage by wild animal? 1) Maize 2) tiff 3) Sorghum 4) wheat

Appendix II.

Lists informant interview (rural agricultural development office, District and better-informed farmers)

1. Name _____ Date _____

2. Education status _____ your profession _____

3. Is there HWC around this area/community?

4. Why farmers are in your area face Human wildlife conflict?

5, what is your attitude toward wildlife conservation

A Strongly important

B Moderate important C. less important D. Not important

22. How wild Animal affects The crop of local community

A In group B. In individual C. In both

23. Which group of local community have positive attitude toward wildlife conservation?

24. How much of local community have negative attitude toward wildlife conservation?

25. What are the causes of human to wildlife conflict? A. over grazing B, Agricultural activity

C. Deforestation D. Human settlement E. Wildlife killing

26 attitudes' toward wildlife

A) Positive B. Negative C. Neutral

